

Product Datasheet

Rabbit EpCAM Recombinant Monoclonal Antibody (orb1519811)

Catalog Number	orb1519811
Category	Antibodies
Description	EpCAM Antibody
Target	EpCAM
Clonality	Recombinant
Species/Host	Rabbit
Isotype	IgG
Conjugation	Unconjugated
Reactivity	Human, Mouse
Form/Appearance	Liquid
Concentration	500 µg/ml
Buffer/Preservatives	Borate Buffered Saline (BBS) pH 8.2 with 0.1% rAlbumin and 0.09% Sodium Azide
Purification	Purified
Immunogen	Between 264 and C-terminus
UniProt ID	P16422
Tested applications	FC, ICC, IHC, IP, WB

Biorbyt Ltd.

7 Signet Court, Swann Road
Cambridge
CB5 8LA
United Kingdom

Email: info@biorbyt.com, support@biorbyt.com

Phone: [+44 \(0\)1223 859353](tel:+44(0)1223859353) | Fax: [+1 \(415\) 651-8558](tel:+1(415)651-8558)

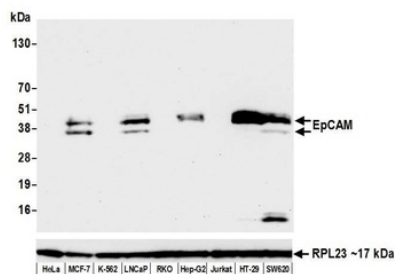
Biorbyt LLC

68 TW Alexander Drive
Research Triangle Park
Durham
NC 27713
United States

Email: info@biorbyt.com, support@biorbyt.com

Phone: [+1 \(415\) 906-5211](tel:+1(415)906-5211) | Fax: [+1 \(415\) 651-8558](tel:+1(415)651-8558)

Dilution range	WB - 1:1000; IP - 12 µl/1 mg lysate; IHC - 1:100 to 1:500. Epitope retrieval with citrate buffer pH6.0 is recommended for FFPE tissue sections.; ICC - 1:100 to 1:500. Epitope retrieval with citrate buffer pH6.0 is recommended for FFPE cell sections.; IHC-IF - 1:100 to 1:500. Epitope retrieval with citrate buffer pH6.0 is recommended for FFPE tissue sections.
Application notes	Format: Whole IgG
Antibody Type	Primary Antibody
Clone Number	BLR077G
Storage	2 - 8°C
Note	For research use only
NCBI	NP_006197.1
Expiration Date	12 months from date of receipt.



Detection of human EpCAM by western blot. Samples: Whole cell lysate (50 µg) from HeLa, MCF-7, K-562, LNCaP, RKO, Hep-G2, Jurkat, HT-29, and SW620 cells prepared using NETN lysis buffer. Antibody: Rabbit anti-EpCAM recombinant monoclonal antibody (orb1519811) used at 1:1000. Secondary: HRP-conjugated goat anti-rabbit IgG. Detection: Chemiluminescence with an exposure time of 10 seconds. Lower Panel: Rabbit anti-RPL23.

Biorbyt Ltd.

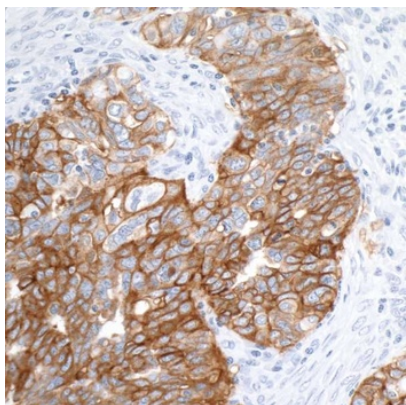
7 Signet Court, Swann Road
Cambridge
CB5 8LA
United Kingdom

Email: info@biorbyt.com, support@biorbyt.com
Phone: [+44 \(0\)1223 859353](tel:+44(0)1223859353) | Fax: [+1 \(415\) 651-8558](tel:+1(415)6518558)

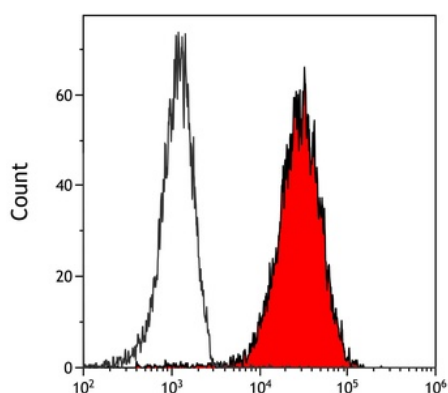
Biorbyt LLC

68 TW Alexander Drive
Research Triangle Park
Durham
NC 27713
United States

Email: info@biorbyt.com, support@biorbyt.com
Phone: [+1 \(415\) 906-5211](tel:+1(415)9065211) | Fax: [+1 \(415\) 651-8558](tel:+1(415)6518558)



Detection of human EpCAM by immunohistochemistry. Sample: FFPE section of human ovarian carcinoma. Antibody: Rabbit anti-EpCAM recombinant monoclonal antibody (orb1519811) used at 1:100. Secondary: HRP-conjugated goat anti-rabbit IgG. Substrate: DAB.



Detection of human EpCAM (shaded) in HT-29 cells by flow cytometry. Antibody: Rabbit anti-EpCAM recombinant monoclonal antibody (orb1519811) or isotype control (unshaded). Secondary: DyLight® 488-conjugated goat anti-rabbit IgG.

Biorbyt Ltd.

7 Signet Court, Swann Road
Cambridge
CB5 8LA
United Kingdom

Email: info@biorbyt.com, support@biorbyt.com

Phone: [+44 \(0\)1223 859353](tel:+44(0)1223859353) | Fax: [+1 \(415\) 651-8558](tel:+1(415)651-8558)

Biorbyt LLC

68 TW Alexander Drive
Research Triangle Park
Durham
NC 27713
United States

Email: info@biorbyt.com, support@biorbyt.com

Phone: [+1 \(415\) 906-5211](tel:+1(415)906-5211) | Fax: [+1 \(415\) 651-8558](tel:+1(415)651-8558)