

## Product Datasheet

# SOX10 Rabbit Recombinant Monoclonal Antibody (orb1519802)

<b>Catalog Number</b>	orb1519802
<b>Category</b>	Antibodies
<b>Description</b>	SOX10 Antibody
<b>Target</b>	SOX10
<b>Clonality</b>	Recombinant
<b>Species/Host</b>	Rabbit
<b>Isotype</b>	IgG
<b>Conjugation</b>	Unconjugated
<b>Reactivity</b>	Human, Mouse
<b>Form/Appearance</b>	Liquid
<b>Concentration</b>	50 µg/ml
<b>Buffer/Preservatives</b>	Borate Buffered Saline (BBS) pH 8.2 with 0.1% rAlbumin and 0.09% Sodium Azide
<b>Purity</b>	Recombinant antibody was purified from cell culture supernatant
<b>Purification</b>	Purified
<b>Immunogen</b>	Between 416 and C-terminus
<b>UniProt ID</b>	<b>P56693</b>

### Biorbyt Ltd.

7 Signet Court, Swann Road  
Cambridge  
CB5 8LA  
United Kingdom

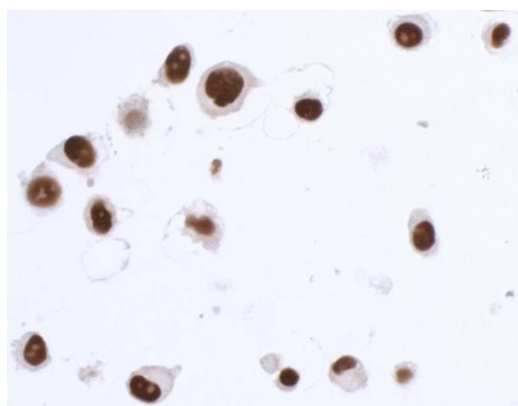
Email: [info@biorbyt.com](mailto:info@biorbyt.com), [support@biorbyt.com](mailto:support@biorbyt.com)  
Phone: [+44 \(0\)1223 859353](tel:+44(0)1223859353) | Fax: [+1 \(415\) 651-8558](tel:+1(415)651-8558)

### Biorbyt LLC

68 TW Alexander Drive  
Research Triangle Park  
Durham  
NC 27713  
United States

Email: [info@biorbyt.com](mailto:info@biorbyt.com), [support@biorbyt.com](mailto:support@biorbyt.com)  
Phone: [+1 \(415\) 906-5211](tel:+1(415)906-5211) | Fax: [+1 \(415\) 651-8558](tel:+1(415)651-8558)

<b>Tested applications</b>	ICC, IF, IHC, IP, WB
<b>Dilution range</b>	(ICC) 1:100 to 1:500. Epitope retrieval with citrate buffer pH6.0 is recommended for FFPE cell sections. (IHC) 1:100 to 1:500. Epitope retrieval with citrate buffer pH6.0 is recommended for FFPE tissue sections. Immunoprecipitation (IP) 20 µl/mg lysate. Multiplex Immunofluorescence (mIF) 1:250. Western Blot (WB) 1:1000
<b>Application notes</b>	All western blot analysis is performed using 5% Milk-TBST for blocking and as antibody diluent. Primary antibody is incubated overnight
<b>Antibody Type</b>	Primary Antibody
<b>Clone Number</b>	BLR080G
<b>Storage</b>	2 - 8°C
<b>Background</b>	SOX10 is a member of the SOX (SRY-related HMG-box) family of transcription factors involved in the regulation of embryonic development and in the determination of the cell fate. SOX10 may act as a transcriptional activator after forming a protein complex with other proteins. SOX10 acts as a nucleocytoplasmic shuttle protein and is important for neural crest and peripheral nervous system development
<b>Note</b>	For research use only
<b>NCBI</b>	<a href="#">NP_008872.1</a>
<b>Expiration Date</b>	12 months from date of receipt.



Detection of human SOX10 in FFPE SK-MEL-28 cells by ICC. Antibody: Rabbit anti-SOX10 recombinant monoclonal antibody (orb1519802). Secondary: HRP-conjugated goat anti-rabbit IgG. Substrate: DAB.

**Biorbyt Ltd.**

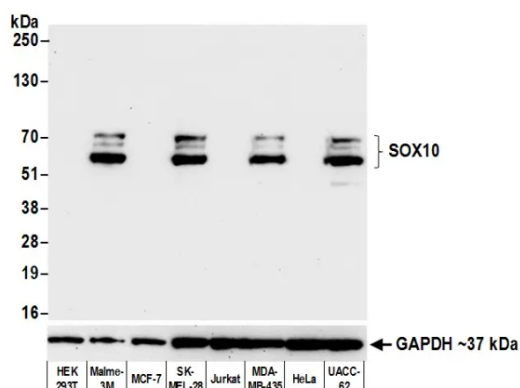
7 Signet Court, Swann Road  
Cambridge  
CB5 8LA  
United Kingdom

Email: [info@biorbyt.com](mailto:info@biorbyt.com), [support@biorbyt.com](mailto:support@biorbyt.com)  
Phone: [+44 \(0\)1223 859353](tel:+44(0)1223859353) | Fax: [+1 \(415\) 651-8558](tel:+1(415)651-8558)

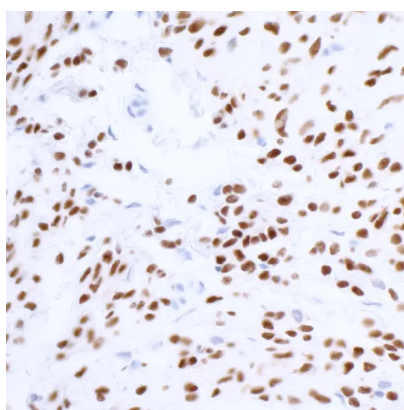
**Biorbyt LLC**

68 TW Alexander Drive  
Research Triangle Park  
Durham  
NC 27713  
United States

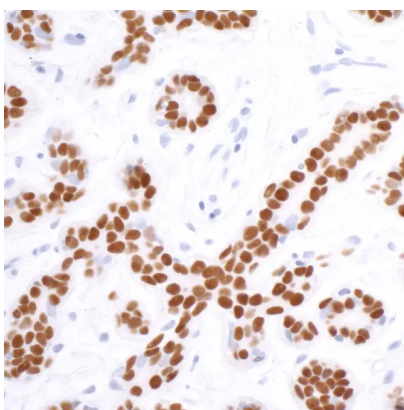
Email: [info@biorbyt.com](mailto:info@biorbyt.com), [support@biorbyt.com](mailto:support@biorbyt.com)  
Phone: [+1 \(415\) 906-5211](tel:+1(415)906-5211) | Fax: [+1 \(415\) 651-8558](tel:+1(415)651-8558)



Detection of human SOX10 by western blot. Samples: Whole cell lysate (15 µg) from HEK293T, Malme-3M, MCF-7, SK-MEL-28, Jurkat, MDA-MB-435, HeLa, and UACC-62 cells prepared using NETN lysis buffer. Antibody: Rabbit anti-SOX10 recombinant monoclonal antibody used at 1:1000. Secondary: HRP-conjugated goat anti-rabbit IgG. Detection: Chemiluminescence with an exposure time of 10 seconds. Lower Panel: Rabbit anti-GAPDH



Detection of human SOX10 in FFPE melanoma by IHC. Antibody: Rabbit anti-SOX10 recombinant monoclonal antibody. Secondary: HRP-conjugated goat anti-rabbit IgG. Substrate: DAB



Detection of human SOX10 in FFPE breast carcinoma by IHC. Antibody: Rabbit anti-SOX10 recombinant monoclonal antibody. Secondary: HRP-conjugated goat anti-rabbit IgG. Substrate: DAB

#### Biorbyt Ltd.

7 Signet Court, Swann Road  
Cambridge  
CB5 8LA  
United Kingdom

Email: [info@biorbyt.com](mailto:info@biorbyt.com), [support@biorbyt.com](mailto:support@biorbyt.com)  
Phone: +44 (0)1223 859353 | Fax: +1 (415) 651-8558

#### Biorbyt LLC

68 TW Alexander Drive  
Research Triangle Park  
Durham  
NC 27713  
United States

Email: [info@biorbyt.com](mailto:info@biorbyt.com), [support@biorbyt.com](mailto:support@biorbyt.com)  
Phone: +1 (415) 906-5211 | Fax: +1 (415) 651-8558