

Product Datasheet

Rabbit ALDH1A1 Recombinant Monoclonal Antibody (orb1519776)

Catalog Number	orb1519776
Category	Antibodies
Description	ALDH1A1 Antibody
Target	ALDH1A1
Clonality	Recombinant
Species/Host	Rabbit
Isotype	IgG
Conjugation	Unconjugated
Reactivity	Human
Form/Appearance	Liquid
Concentration	500 µg/ml
Buffer/Preservatives	Borate Buffered Saline (BBS) pH 8.2 with 0.1% rAlbumin and 0.09% Sodium Azide
Purification	Purified
Immunogen	Between 325 and 375
UniProt ID	P00352
Tested applications	ICC, IHC, IP, WB

Biorbyt Ltd.

7 Signet Court, Swann Road
Cambridge
CB5 8LA
United Kingdom

Email: info@biorbyt.com, support@biorbyt.com

Phone: [+44 \(0\)1223 859353](tel:+44(0)1223859353) | Fax: [+1 \(415\) 651-8558](tel:+1(415)651-8558)

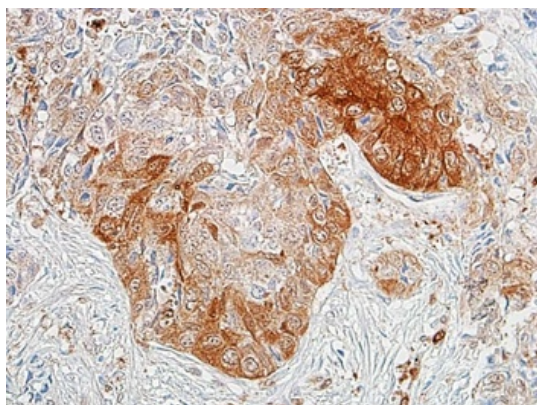
Biorbyt LLC

68 TW Alexander Drive
Research Triangle Park
Durham
NC 27713
United States

Email: info@biorbyt.com, support@biorbyt.com

Phone: [+1 \(415\) 906-5211](tel:+1(415)906-5211) | Fax: [+1 \(415\) 651-8558](tel:+1(415)651-8558)

Dilution range	WB - 1:1000; IP - 12 µl/1 mg lysate; IHC - 1:100 to 1:500. Epitope retrieval with citrate buffer pH6.0 is recommended for FFPE tissue sections.; ICC - 1:100 to 1:500. Epitope retrieval with citrate buffer pH6.0 is recommended for FFPE cell sections.
Application notes	Format: Whole IgG
Antibody Type	Primary Antibody
Clone Number	BLR089G
Storage	2 - 8°C
Note	For research use only
NCBI	NP_000680.2
Expiration Date	12 months from date of receipt.



Detection of human ALDH1A1 in FFPE lung carcinoma by IHC. Antibody: Rabbit anti-ALDH1A1 recombinant monoclonal antibody (orb1519776). Secondary: HRP-conjugated goat anti-rabbit IgG. Substrate: DAB.

Biorbyt Ltd.

7 Signet Court, Swann Road
Cambridge
CB5 8LA
United Kingdom

Email: info@biorbyt.com, support@biorbyt.com

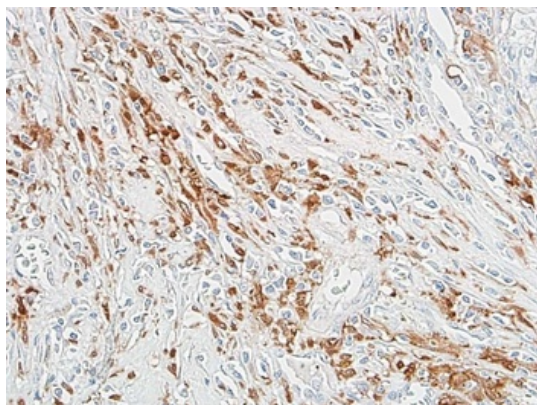
Phone: [+44 \(0\)1223 859353](tel:+44(0)1223859353) | Fax: [+1 \(415\) 651-8558](tel:+1(415)651-8558)

Biorbyt LLC

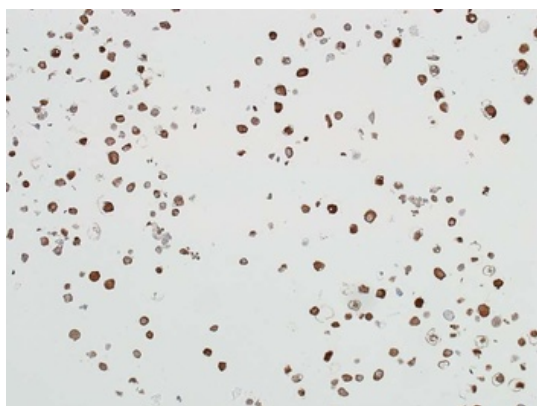
68 TW Alexander Drive
Research Triangle Park
Durham
NC 27713
United States

Email: info@biorbyt.com, support@biorbyt.com

Phone: [+1 \(415\) 906-5211](tel:+1(415)906-5211) | Fax: [+1 \(415\) 651-8558](tel:+1(415)651-8558)



Detection of human ALDH1A1 in FFPE breast carcinoma by IHC. Antibody: Rabbit anti-ALDH1A1 recombinant monoclonal antibody (orb1519776). Secondary: HRP-conjugated goat anti-rabbit IgG. Substrate: DAB.



Detection of human ALDH1A1 in FFPE NCI-H2286 cells by ICC. Antibody: Rabbit anti-ALDH1A1 recombinant monoclonal antibody (orb1519776). Secondary: HRP-conjugated goat anti-rabbit IgG. Substrate: DAB.

Biorbyt Ltd.

7 Signet Court, Swann Road
Cambridge
CB5 8LA
United Kingdom

Email: info@biorbyt.com, support@biorbyt.com

Phone: [+44 \(0\)1223 859353](tel:+44(0)1223859353) | Fax: [+1 \(415\) 651-8558](tel:+1(415)651-8558)

Biorbyt LLC

68 TW Alexander Drive
Research Triangle Park
Durham
NC 27713
United States

Email: info@biorbyt.com, support@biorbyt.com

Phone: [+1 \(415\) 906-5211](tel:+1(415)906-5211) | Fax: [+1 \(415\) 651-8558](tel:+1(415)651-8558)