

Product Datasheet

Rabbit anti-MSH6 Recombinant Monoclonal Antibody (orb1519701)

Catalog Number	orb1519701
Category	Antibodies
Description	MSH6 Antibody
Target	MSH6
Clonality	Recombinant
Species/Host	Rabbit
Conjugation	Unconjugated
Reactivity	Human
Form/Appearance	Whole IgG
Concentration	250 µg/ml
Buffer/Preservatives	Borate Buffered Saline (BBS) pH 8.2 with 0.1% rAlbumin and 0.09% Sodium Azide
Immunogen	Between 1310 and C-terminus
UniProt ID	P52701
Tested applications	FC, ICC, IHC, IP, WB
Dilution range	WB - 1:1,000; IP - 20 µl/1 mg lysate; IHC - 1:100 to 1:500. Epitope retrieval with citrate buffer pH6.0 is recommended for FFPE tissue sections.; ICC - 1:100 to 1:500. Epitope retrieval with citrate buffer pH6.0 is recommended for FFPE cell sections.

Biorbyt Ltd.

7 Signet Court, Swann Road
Cambridge
CB5 8LA
United Kingdom

Email: info@biorbyt.com, support@biorbyt.com

Phone: [+44 \(0\)1223 859353](tel:+44(0)1223859353) | Fax: [+1 \(415\) 651-8558](tel:+1(415)651-8558)

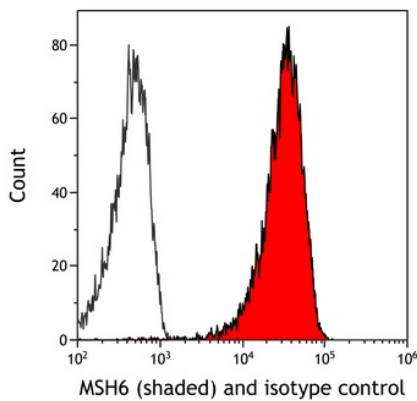
Biorbyt LLC

68 TW Alexander Drive
Research Triangle Park
Durham
NC 27713
United States

Email: info@biorbyt.com, support@biorbyt.com

Phone: [+1 \(415\) 906-5211](tel:+1(415)906-5211) | Fax: [+1 \(415\) 651-8558](tel:+1(415)651-8558)

Application notes	Format: Whole IgG
Antibody Type	Primary Antibody
Clone Number	BLR117H
Storage	2 - 8°C
Note	For research use only
NCBI	NP_000170.1
Expiration Date	12 months from date of receipt.



Detection of human MSH6 (shaded) in HEK293T cells by flow cytometry. Antibody: Rabbit anti-MSH6 recombinant monoclonal antibody (orb1519701) or isotype control (unshaded). Secondary: DyLight® 650-conjugated goat anti-rabbit IgG.

Biorbyt Ltd.

7 Signet Court, Swann Road
Cambridge
CB5 8LA
United Kingdom

Email: info@biorbyt.com, support@biorbyt.com

Phone: [+44 \(0\)1223 859353](tel:+44(0)1223859353) | Fax: [+1 \(415\) 651-8558](tel:+1(415)651-8558)

Biorbyt LLC

68 TW Alexander Drive
Research Triangle Park
Durham
NC 27713
United States

Email: info@biorbyt.com, support@biorbyt.com

Phone: [+1 \(415\) 906-5211](tel:+1(415)906-5211) | Fax: [+1 \(415\) 651-8558](tel:+1(415)651-8558)