

## Product Datasheet

# T Cell Activation and Proliferation Antibody Panel (orb1519155)

<b>Catalog Number</b>	orb1519155
<b>Category</b>	Antibodies
<b>Description</b>	This panel combines markers for T cells (CD3E, CD8 alpha), tumor cells (Cytokeratin), macrophages (CD68), proliferation (Ki-67), and immune checkpoint (PD-L1), this panel enables simultaneous assessment of T cell activation status, proliferative activity, and immune suppression within the tumor microenvironment.
<b>Target</b>	CD3E Cytokeratin CD8 alpha CD68 Ki-67 PD-L1
<b>Clonality</b>	Recombinant
<b>Conjugation</b>	Unconjugated
<b>Reactivity</b>	Human
<b>Form/Appearance</b>	Liquid
<b>UniProt ID</b>	<b>P19012, P07766, Q9NZQ7, P02533, P08727, P13645, P34810, P08779, P01732, P46013</b>
<b>Tested applications</b>	IF, IHC
<b>Application notes</b>	This bundle contains: 1x Rabbit anti-CD3E Recombinant Monoclonal Antibody, Mouse anti-Cytokeratin Monoclonal Antibody, Purified, Rabbit anti-CD8 alpha Recombinant Monoclonal Antibody, Mouse anti-CD68 Recombinant Monoclonal Antibody, Purified, Rabbit anti-Ki-67 Recombinant Monoclonal Antibody and Rabbit anti-PD-L1 Recombinant Monoclonal Antibody
<b>Antibody Type</b>	Primary Antibody

**Biorbyt Ltd.**

7 Signet Court, Swann Road  
Cambridge  
CB5 8LA  
United Kingdom

Email: [info@biorbyt.com](mailto:info@biorbyt.com), [support@biorbyt.com](mailto:support@biorbyt.com)

Phone: [+44 \(0\)1223 859353](tel:+44(0)1223859353) | Fax: [+1 \(415\) 651-8558](tel:+1(415)651-8558)

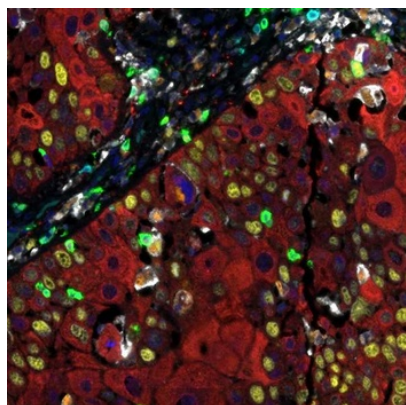
**Biorbyt LLC**

68 TW Alexander Drive  
Research Triangle Park  
Durham  
NC 27713  
United States

Email: [info@biorbyt.com](mailto:info@biorbyt.com), [support@biorbyt.com](mailto:support@biorbyt.com)

Phone: [+1 \(415\) 906-5211](tel:+1(415)906-5211) | Fax: [+1 \(415\) 651-8558](tel:+1(415)651-8558)

<b>Storage</b>	2 - 8°C
<b>Note</b>	For research use only
<b>NCBI</b>	<b>P19012, P07766, P13645, Q9NZQ7, P46013, P08779, P01732, P08727, P34810, P02533</b>
<b>Expiration Date</b>	12 months from date of receipt.



Detection of human CD3 (cyan) , CD8 (green) , CD68 (orange) , CK (red) , Ki67 (yellow) and PD-L1 (white) in FFPE HNSCC by IHC-IF. Rabbit anti-CD3E recombinant monoclonal [BL-298-5D12], rabbit anti-CD8 alpha recombinant monoclonal, mouse anti-CD68 monoclonal [KP-1], mouse anti-cytokeratin monoclonal [AE1/AE3], rabbit anti-Ki-67 monoclonal and rabbit anti-PD-L1 recombinant monoclonal. Secondary: HRP-conjugated goat anti-rabbit IgG and HRP-conjugated goat anti-mouse IgG. Substrate: Opal™ 480, 520, 570, 620, 690 and 780. Counterstain: DAPI (blue)

**Biorbyt Ltd.**

7 Signet Court, Swann Road  
Cambridge  
CB5 8LA  
United Kingdom

Email: [info@biorbyt.com](mailto:info@biorbyt.com), [support@biorbyt.com](mailto:support@biorbyt.com)

Phone: [+44 \(0\)1223 859353](tel:+44(0)1223859353) | Fax: [+1 \(415\) 651-8558](tel:+1(415)651-8558)

**Biorbyt LLC**

68 TW Alexander Drive  
Research Triangle Park  
Durham  
NC 27713  
United States

Email: [info@biorbyt.com](mailto:info@biorbyt.com), [support@biorbyt.com](mailto:support@biorbyt.com)

Phone: [+1 \(415\) 906-5211](tel:+1(415)906-5211) | Fax: [+1 \(415\) 651-8558](tel:+1(415)651-8558)