

Product Datasheet

Calnexin-CT Antibody (APC) (orb151325)

Catalog Number	orb151325
Category	Antibodies
Description	Rabbit polyclonal antibody against Calnexin conjugated to APC
Target	Calnexin-CT
Clonality	Polyclonal
Species/Host	Rabbit
Conjugation	APC
Reactivity	Aves, Bovine, Canine, Drosophila, Frog, Gallus, Guinea pig, Hamster, Human, Monkey, Mouse, Porcine, Rabbit, Rat, Sheep
Concentration	1 mg/ml
Buffer/Preservatives	95.46mM Phosphate, 2.48mM MES and 2mM EDTA
Purification	Protein A purified
Immunogen	Dog calnexin C-terminal synthetic peptide conjugated to KLH. Identical to human, mouse and rat calnexin sequences over these residues.
UniProt ID	P24643
MW	90kDa
Tested applications	ICC, IF, IHC, WB
Dilution range	WB (1:1000), IHC (1:100), ICC/IF (1:100)

Biorbyt Ltd.

7 Signet Court, Swann Road
Cambridge
CB5 8LA
United Kingdom

Email: info@biorbyt.com, support@biorbyt.com

Phone: [+44 \(0\)1223 859353](tel:+44(0)1223859353) | Fax: [+1 \(415\) 651-8558](tel:+1(415)651-8558)

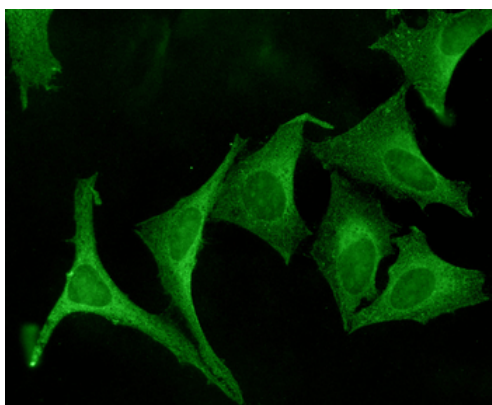
Biorbyt LLC

68 TW Alexander Drive
Research Triangle Park
Durham
NC 27713-2847
United States

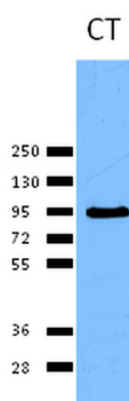
Email: info@biorbyt.com, support@biorbyt.com

Phone: [+1 \(415\) 906-5211](tel:+1(415)906-5211) | Fax: [+1 \(415\) 651-8558](tel:+1(415)651-8558)

Application notes	A 1:1000 dilution was sufficient for detection of Calnexin in 10 µg of HeLa cell lysate by ECL immunoblot analysis.
Specificity	Detects the C-terminal domain of Calnexin ~90kDa. Weak detection in Chicken, Drosophila, and Xenopus tissues
Storage	Conjugated antibodies should be stored according to the product label
Note	For research use only
Entrez	403908
NCBI	NP_001003232.1
Expiration Date	12 months from date of receipt.



Immunocytochemistry/Immunofluorescence analysis using Rabbit Anti-Calnexin Polyclonal Antibody. Tissue: Cervical cancer cell line (HeLa). Species: Human. Primary Antibody: Rabbit Anti-Calnexin Polyclonal Antibody at 1:100. Secondary Antibody: FITC Goat Anti-Rabbit (green).



Western blot analysis of Human Cervical cancer cell line (HeLa) lysate showing detection of Calnexin protein using Rabbit Anti-Calnexin Polyclonal Antibody. Primary Antibody: Rabbit Anti-Calnexin Polyclonal Antibody at 1:1000.

Biorbyt Ltd.

7 Signet Court, Swann Road
Cambridge
CB5 8LA
United Kingdom

Email: info@biorbyt.com, support@biorbyt.com

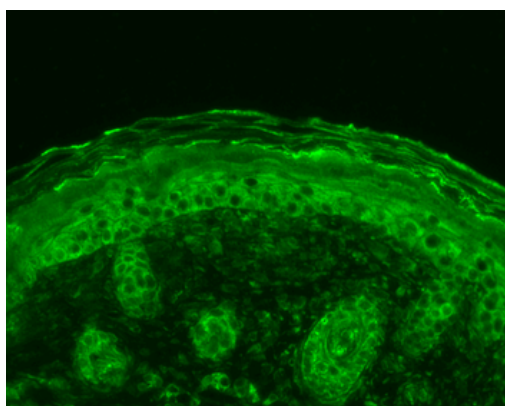
Phone: [+44 \(0\)1223 859353](tel:+44(0)1223859353) | Fax: [+1 \(415\) 651-8558](tel:+1(415)651-8558)

Biorbyt LLC

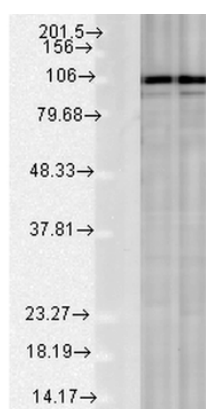
68 TW Alexander Drive
Research Triangle Park
Durham
NC 27713-2847
United States

Email: info@biorbyt.com, support@biorbyt.com

Phone: [+1 \(415\) 906-5211](tel:+1(415)906-5211) | Fax: [+1 \(415\) 651-8558](tel:+1(415)651-8558)



Immunohistochemistry analysis using Rabbit Anti-Calnexin Polyclonal Antibody. Tissue: backskin. Species: Mouse. Fixation: Bouin's Fixative Solution. Primary Antibody: Rabbit Anti-Calnexin Polyclonal Antibody at 1:100 for 1 hour at RT. Secondary Antibody: FITC Goat Anti-Rabbit (green) at 1:50 for 1 hour at RT.



Western blot analysis of Rat Tissue lysates showing detection of Calnexin protein using Rabbit Anti-Calnexin Polyclonal Antibody. Load: 15 µg protein. Block: 1.5% BSA. Primary Antibody: Rabbit Anti-Calnexin Polyclonal Antibody at 1:1000 for 2 hours at RT. Secondary Antibody: Donkey Anti-Rabbit IgG: HRP for 1 hour at RT.

Biorbyt Ltd.

7 Signet Court, Swann Road
Cambridge
CB5 8LA
United Kingdom

Email: info@biorbyt.com, support@biorbyt.com

Phone: [+44 \(0\)1223 859353](tel:+44(0)1223859353) | Fax: [+1 \(415\) 651-8558](tel:+1(415)651-8558)

Biorbyt LLC

68 TW Alexander Drive
Research Triangle Park
Durham
NC 27713-2847
United States

Email: info@biorbyt.com, support@biorbyt.com

Phone: [+1 \(415\) 906-5211](tel:+1(415)906-5211) | Fax: [+1 \(415\) 651-8558](tel:+1(415)651-8558)