

## Product Datasheet

### ATF4 Antibody (RPE) (orb150638)

<b>Catalog Number</b>	orb150638
<b>Category</b>	Antibodies
<b>Description</b>	Mouse monoclonal antibody against ATF4 conjugated to RPE
<b>Target</b>	ATF4
<b>Clonality</b>	Monoclonal
<b>Species/Host</b>	Mouse
<b>Isotype</b>	IgG2a
<b>Conjugation</b>	RPE
<b>Reactivity</b>	Human, Rat
<b>Concentration</b>	1 mg/ml
<b>Buffer/Preservatives</b>	95.46mM Phosphate, 2.48mM MES and 2mM EDTA
<b>Purification</b>	Protein G Purified
<b>Immunogen</b>	Fusion protein amino acids 25-327 of human ATF4. 86% identical to rat, and 85% identical to mouse. 50% identity with ATF5.
<b>UniProt ID</b>	<b>P18848</b>
<b>MW</b>	60kDa
<b>Tested applications</b>	ICC, IF, IHC, WB
<b>Dilution range</b>	WB (1:1000)

**Biorbyt Ltd.**

7 Signet Court, Swann Road  
Cambridge  
CB5 8LA  
United Kingdom

Email: [info@biorbyt.com](mailto:info@biorbyt.com), [support@biorbyt.com](mailto:support@biorbyt.com)

Phone: [+44 \(0\)1223 859353](tel:+44(0)1223859353) | Fax: [+1 \(415\) 651-8558](tel:+1(415)651-8558)

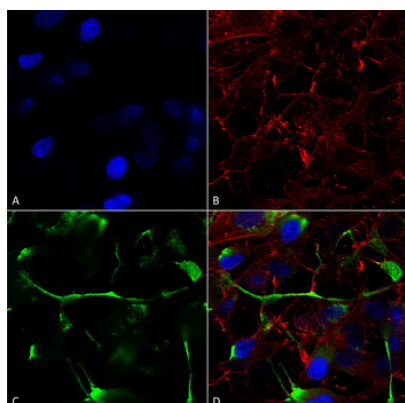
**Biorbyt LLC**

68 TW Alexander Drive  
Research Triangle Park  
Durham  
NC 27713-2847  
United States

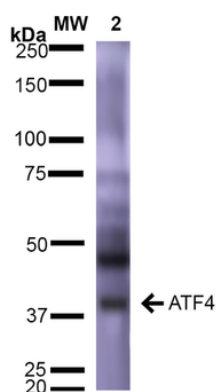
Email: [info@biorbyt.com](mailto:info@biorbyt.com), [support@biorbyt.com](mailto:support@biorbyt.com)

Phone: [+1 \(415\) 906-5211](tel:+1(415)906-5211) | Fax: [+1 \(415\) 651-8558](tel:+1(415)651-8558)

<b>Application notes</b>	1 µg/ml was sufficient for detection of ATF4 in 20 µg of rat brain lysate by colorimetric immunoblot analysis using Goat anti-mouse IgG:HRP as the secondary antibody.
<b>Specificity</b>	Detects ~60kDa. Does not cross-react with ATF5.
<b>Clone Number</b>	N360A/24 (Formerly sold as S360A-24)
<b>Storage</b>	Conjugated antibodies should be stored according to the product label
<b>Note</b>	For research use only
<b>Entrez</b>	<b>468</b>
<b>NCBI</b>	<b>NP_001666.2</b>
<b>Expiration Date</b>	12 months from date of receipt.



Immunocytochemistry/Immunofluorescence analysis using Mouse Anti-ATF4 Monoclonal Antibody, Clone N360A/24. Tissue: Neuroblastoma cells (SH-SY5Y). Species: Human. Fixation: 4% PFA for 15 min. Primary Antibody: Mouse Anti-ATF4 Monoclonal Antibody at 1:200 for overnight at 4°C with slow rocking. Secondary Antibody: AlexaFluor 488 at 1:1000 for 1 hour at RT. Counterstain: Phalloidin-iFluor 647 (red) F-Actin stain; Hoechst (blue) nuclear stain at 1:800, 1.6mM for 20 min at RT. (A) Hoechst (blue) nuclear stain. (B) Phalloidin-iFluor 647 (red) F-Actin stain. (C) ATF4 Antibody (D) Composite.



Western Blot analysis of Rat Brain showing detection of ~39 kDa (isoform 2) ATF4 protein using Mouse Anti-ATF4 Monoclonal Antibody, Clone N360A/24. Lane 1: Molecular Weight Ladder (MW). Lane 2: Rat Brain. Load: 15 µg. Block: 5% Skim Milk in 1X TBST. Primary Antibody: Mouse Anti-ATF4 Monoclonal Antibody at 1:1000 for 2 hours at RT. Secondary Antibody: Goat Anti-Mouse IgG: HRP at 1:2000 for 60 min at RT. Color Development: ECL solution for 5 min at RT. Predicted/Observed Size: ~39 kDa (isoform 2).

**Biorbyt Ltd.**

7 Signet Court, Swann Road  
Cambridge  
CB5 8LA  
United Kingdom

Email: [info@biorbyt.com](mailto:info@biorbyt.com), [support@biorbyt.com](mailto:support@biorbyt.com)  
Phone: +44 (0)1223 859353 | Fax: +1 (415) 651-8558

**Biorbyt LLC**

68 TW Alexander Drive  
Research Triangle Park  
Durham  
NC 27713-2847  
United States

Email: [info@biorbyt.com](mailto:info@biorbyt.com), [support@biorbyt.com](mailto:support@biorbyt.com)  
Phone: +1 (415) 906-5211 | Fax: +1 (415) 651-8558