

Product Datasheet

ATF4 Antibody (APC) (orb150632)

Catalog Number	orb150632
Category	Antibodies
Description	Mouse monoclonal antibody against ATF4 conjugated to APC
Target	ATF4
Clonality	Monoclonal
Species/Host	Mouse
Isotype	IgG2a
Conjugation	APC
Reactivity	Human, Rat
Concentration	1 mg/ml
Buffer/Preservatives	95.46mM Phosphate, 2.48mM MES and 2mM EDTA
Purification	Protein G Purified
Immunogen	Fusion protein amino acids 25-327 of human ATF4. 86% identical to rat, and 85% identical to mouse. 50% identity with ATF5.
UniProt ID	P18848
MW	60kDa
Tested applications	ICC, IF, IHC, WB
Dilution range	WB (1:1000)

Biorbyt Ltd.

7 Signet Court, Swann Road
Cambridge
CB5 8LA
United Kingdom

Email: info@biorbyt.com, support@biorbyt.com

Phone: [+44 \(0\)1223 859353](tel:+44(0)1223859353) | Fax: [+1 \(415\) 651-8558](tel:+1(415)651-8558)

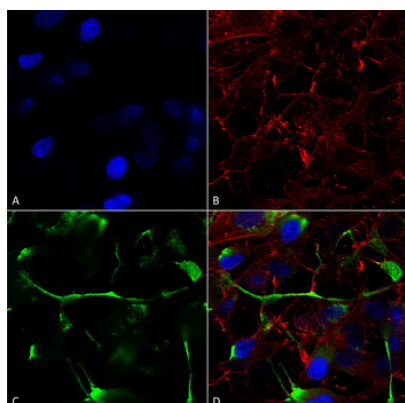
Biorbyt LLC

68 TW Alexander Drive
Research Triangle Park
Durham
NC 27713-2847
United States

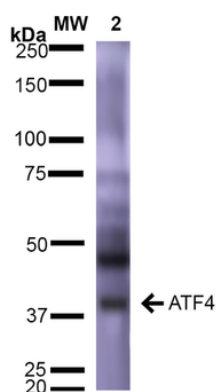
Email: info@biorbyt.com, support@biorbyt.com

Phone: [+1 \(415\) 906-5211](tel:+1(415)906-5211) | Fax: [+1 \(415\) 651-8558](tel:+1(415)651-8558)

Application notes	1 µg/ml was sufficient for detection of ATF4 in 20 µg of rat brain lysate by colorimetric immunoblot analysis using Goat anti-mouse IgG:HRP as the secondary antibody.
Specificity	Detects ~60kDa. Does not cross-react with ATF5.
Clone Number	N360A/24 (Formerly sold as S360A-24)
Storage	Conjugated antibodies should be stored according to the product label
Note	For research use only
Entrez	468
NCBI	NP_001666.2
Expiration Date	12 months from date of receipt.



Immunocytochemistry/Immunofluorescence analysis using Mouse Anti-ATF4 Monoclonal Antibody, Clone N360A/24. Tissue: Neuroblastoma cells (SH-SY5Y). Species: Human. Fixation: 4% PFA for 15 min. Primary Antibody: Mouse Anti-ATF4 Monoclonal Antibody at 1:200 for overnight at 4°C with slow rocking. Secondary Antibody: AlexaFluor 488 at 1:1000 for 1 hour at RT. Counterstain: Phalloidin-iFluor 647 (red) F-Actin stain; Hoechst (blue) nuclear stain at 1:800, 1.6mM for 20 min at RT. (A) Hoechst (blue) nuclear stain. (B) Phalloidin-iFluor 647 (red) F-Actin stain. (C) ATF4 Antibody (D) Composite.



Western Blot analysis of Rat Brain showing detection of ~39 kDa (isoform 2) ATF4 protein using Mouse Anti-ATF4 Monoclonal Antibody, Clone N360A/24. Lane 1: Molecular Weight Ladder (MW). Lane 2: Rat Brain. Load: 15 µg. Block: 5% Skim Milk in 1X TBST. Primary Antibody: Mouse Anti-ATF4 Monoclonal Antibody at 1:1000 for 2 hours at RT. Secondary Antibody: Goat Anti-Mouse IgG: HRP at 1:2000 for 60 min at RT. Color Development: ECL solution for 5 min at RT. Predicted/Observed Size: ~39 kDa (isoform 2).

Biorbyt Ltd.

7 Signet Court, Swann Road
Cambridge
CB5 8LA
United Kingdom

Email: info@biorbyt.com, support@biorbyt.com
Phone: +44 (0)1223 859353 | Fax: +1 (415) 651-8558

Biorbyt LLC

68 TW Alexander Drive
Research Triangle Park
Durham
NC 27713-2847
United States

Email: info@biorbyt.com, support@biorbyt.com
Phone: +1 (415) 906-5211 | Fax: +1 (415) 651-8558