

Product Datasheet

PAK1/PAK2/PAK3 (Phospho-Thr423/Thr402/Thr421) Antibody (orb14878)

Catalog Number	orb14878
Category	Antibodies
Description	PAK1/PAK2/PAK3 (Phospho-Thr423/Thr402/Thr421) Antibody
Clonality	Polyclonal
Species/Host	Rabbit
Conjugation	Unconjugated
Reactivity	Human, Mouse, Rat
UniProt ID	Q13153
RRID	AB_10751071
Tested applications	IF, IHC
Antibody Type	Primary Antibody
Storage	Maintain refrigerated at 2-8°C for up to 2 weeks. For long term storage store at -20°C in small aliquots to prevent freeze-thaw cycles.
Note	For research use only
Expiration Date	12 months from date of receipt.

Biorbyt Ltd.

7 Signet Court, Swann Road
Cambridge
CB5 8LA
United Kingdom

Email: info@biorbyt.com, support@biorbyt.com

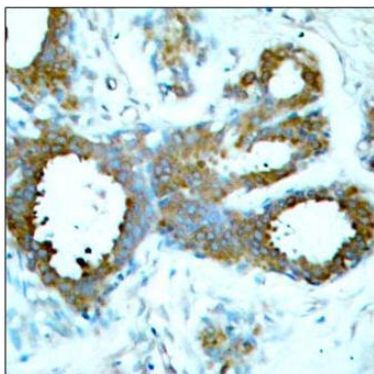
Phone: [+44 \(0\)1223 859353](tel:+44(0)1223859353) | Fax: [+1 \(415\) 651-8558](tel:+1(415)651-8558)

Biorbyt LLC

68 TW Alexander Drive
Research Triangle Park
Durham
NC 27713
United States

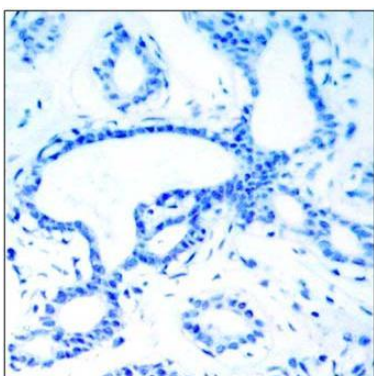
Email: info@biorbyt.com, support@biorbyt.com

Phone: [+1 \(415\) 906-5211](tel:+1(415)906-5211) | Fax: [+1 \(415\) 651-8558](tel:+1(415)651-8558)



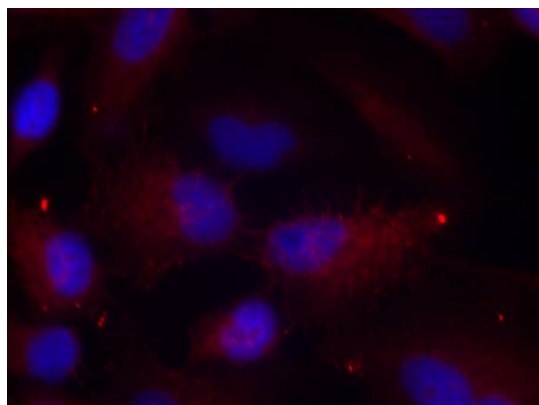
P-Peptide

Immunohistochemical analysis of paraffin-embedded human breast carcinoma tissue, using PAK1/PAK2/PAK3 (Phospho-Thr423/Thr402/Thr421) antibody



P-Peptide

Immunohistochemical analysis of paraffin-embedded human breast carcinoma tissue, using PAK1/PAK2/PAK3 (Phospho-Thr423/Thr402/Thr421) antibody



Immunofluorescence staining of methanol-fixed HeLa cells using PAK1/PAK2/PAK3 (Phospho-Thr423/Thr402/Thr421) antibody (Red)

Biorbyt Ltd.

7 Signet Court, Swann Road
Cambridge
CB5 8LA
United Kingdom

Email: info@biorbyt.com, support@biorbyt.com

Phone: [+44 \(0\)1223 859353](tel:+44(0)1223859353) | Fax: [+1 \(415\) 651-8558](tel:+1(415)651-8558)

Biorbyt LLC

68 TW Alexander Drive
Research Triangle Park
Durham
NC 27713
United States

Email: info@biorbyt.com, support@biorbyt.com

Phone: [+1 \(415\) 906-5211](tel:+1(415)906-5211) | Fax: [+1 \(415\) 651-8558](tel:+1(415)651-8558)