

Product Datasheet

PDI Antibody (PerCP) (orb148148)

Catalog Number	orb148148
Category	Antibodies
Description	Mouse monoclonal to EndoPDI (PerCP). Endothelial protein disulfide isomerase (EndoPDI) is a thioredoxin member of the protein disulfide isomerase family of chaperones. This enzyme has been localized to the endoplasmic reticulum in primary endothelial cells, but colocalizes with nucleoli in the nuclei of breast, colon, and renal cancer cells. EndoPDI mRNA and protein expression is induced by hypoxia and exhibits a protective effect on endothelial cells during hypoxia..
Target	PDI
Clonality	Monoclonal
Species/Host	Mouse
Isotype	IgG2a
Conjugation	PerCP
Reactivity	Human
Concentration	1 mg/ml
Buffer/Preservatives	95.46mM Phosphate, 2.48mM MES and 2mM EDTA
Purification	Protein G Purified
Immunogen	Synthesized peptide - 12 amino acids long (ADGEDGQDPHSK) corresponding to residues 52 - 63 of the EndoPDI protein
UniProt ID	Q8NBS9
MW	48kDa

Biorbyt Ltd.

7 Signet Court, Swann Road
Cambridge
CB5 8LA
United Kingdom

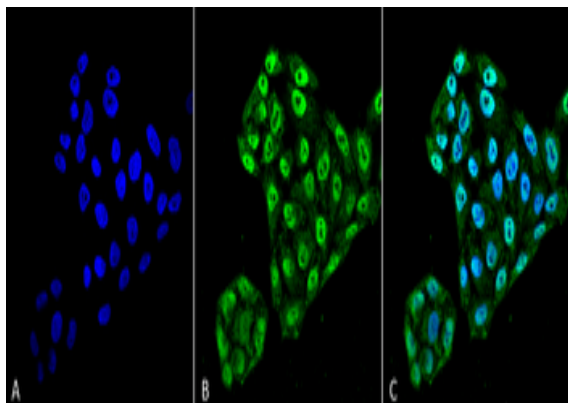
Email: info@biorbyt.com, support@biorbyt.com
Phone: [+44 \(0\)1223 859353](tel:+44(0)1223859353) | Fax: [+1 \(415\) 651-8558](tel:+1(415)651-8558)

Biorbyt LLC

68 TW Alexander Drive
Research Triangle Park
Durham
NC 27713
United States

Email: info@biorbyt.com, support@biorbyt.com
Phone: [+1 \(415\) 906-5211](tel:+1(415)906-5211) | Fax: [+1 \(415\) 651-8558](tel:+1(415)651-8558)

Tested applications	ELISA, ICC, IF, IHC, IP, WB
Dilution range	WB (1:200)
Application notes	1 µg/ml was sufficient for detection of EndoPDI in 20 µg of heat shocked HeLa cell lysate by colorimetric immunoblot analysis using Goat anti -mouse IgG:HRP as the secondary antibody.
Specificity	Detects ~48kDa.
Clone Number	2E7/7
Storage	Conjugated antibodies should be stored according to the product label
Note	For research use only
Entrez	81567
NCBI	NP_001139021
Expiration Date	12 months from date of receipt.



Immunocytochemistry/Immunofluorescence analysis using Mouse Anti-EndoPDI Monoclonal Antibody, Clone 2E7/7. Tissue: Cervical cancer cell line (HeLa). Species: Human. Fixation: 4% Formaldehyde for 15 min at RT. Primary Antibody: Mouse Anti-EndoPDI Monoclonal Antibody at 1:100 for 60 min at RT. Secondary Antibody: Goat Anti-Mouse ATTO 488 at 1:100 for 60 min at RT. Counterstain: DAPI (blue) nuclear stain at 1:5000 for 5 min RT. Localization: Nucleus, Endoplasmic Reticulum, Endoplasmic Reticulum Lumen. Magnification: 60X.

Biorbyt Ltd.

7 Signet Court, Swann Road
Cambridge
CB5 8LA
United Kingdom

Email: info@biorbyt.com, support@biorbyt.com

Phone: [+44 \(0\)1223 859353](tel:+44(0)1223859353) | Fax: [+1 \(415\) 651-8558](tel:+1(415)651-8558)

Biorbyt LLC

68 TW Alexander Drive
Research Triangle Park
Durham
NC 27713
United States

Email: info@biorbyt.com, support@biorbyt.com

Phone: [+1 \(415\) 906-5211](tel:+1(415)906-5211) | Fax: [+1 \(415\) 651-8558](tel:+1(415)651-8558)