

## Product Datasheet

### PDI Antibody (Biotin) (orb148144)

<b>Catalog Number</b>	orb148144
<b>Category</b>	Antibodies
<b>Description</b>	Mouse monoclonal to EndoPDI (Biotin). Endothelial protein disulfide isomerase (EndoPDI) is a thioredoxin member of the protein disulfide isomerase family of chaperones. This enzyme has been localized to the endoplasmic reticulum in primary endothelial cells, but colocalizes with nucleoli in the nuclei of breast, colon, and renal cancer cells. EndoPDI mRNA and protein expression is induced by hypoxia and exhibits a protective effect on endothelial cells during hypoxia..
<b>Target</b>	PDI
<b>Clonality</b>	Monoclonal
<b>Species/Host</b>	Mouse
<b>Isotype</b>	IgG2a
<b>Conjugation</b>	Biotin
<b>Reactivity</b>	Human
<b>Concentration</b>	1 mg/ml
<b>Buffer/Preservatives</b>	136.36mM Ethanolamine, 133.23 mM Chlorides, 9.55mM Phosphates, 9.55mM Sodium Bicarbonate
<b>Purification</b>	Protein G Purified
<b>Immunogen</b>	Synthesized peptide - 12 amino acids long (ADGEDGQDPHSK) corresponding to residues 52 - 63 of the EndoPDI protein
<b>UniProt ID</b>	<b>Q8NBS9</b>

**Biorbyt Ltd.**

7 Signet Court, Swann Road  
Cambridge  
CB5 8LA  
United Kingdom

Email: [info@biorbyt.com](mailto:info@biorbyt.com), [support@biorbyt.com](mailto:support@biorbyt.com)

Phone: [+44 \(0\)1223 859353](tel:+44(0)1223859353) | Fax: [+1 \(415\) 651-8558](tel:+1(415)651-8558)

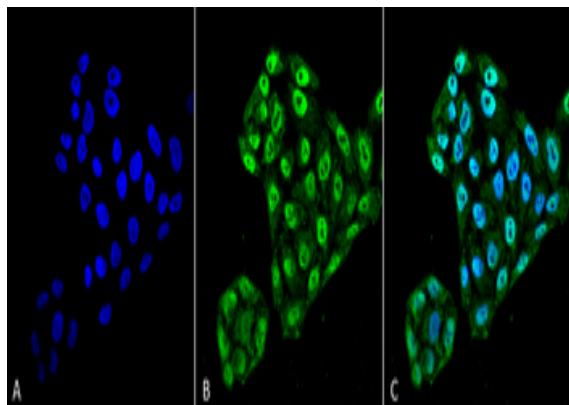
**Biorbyt LLC**

68 TW Alexander Drive  
Research Triangle Park  
Durham  
NC 27713  
United States

Email: [info@biorbyt.com](mailto:info@biorbyt.com), [support@biorbyt.com](mailto:support@biorbyt.com)

Phone: [+1 \(415\) 906-5211](tel:+1(415)906-5211) | Fax: [+1 \(415\) 651-8558](tel:+1(415)651-8558)

<b>MW</b>	48kDa
<b>Tested applications</b>	ELISA, ICC, IF, IHC, IP, WB
<b>Dilution range</b>	WB (1:200)
<b>Application notes</b>	1 µg/ml of SMC-204 was sufficient for detection of EndoPDI in 20 µg of heat shocked HeLa cell lysate by colorimetric immunoblot analysis using Goat anti - mouse IgG:HRP as the secondary antibody.
<b>Specificity</b>	Detects ~48kDa.
<b>Clone Number</b>	2E7/7
<b>Storage</b>	Conjugated antibodies should be stored according to the product label
<b>Note</b>	For research use only
<b>Entrez</b>	<b>81567</b>
<b>NCBI</b>	<b>NP_001139021</b>
<b>Expiration Date</b>	12 months from date of receipt.



Immunocytochemistry/Immunofluorescence analysis using Mouse Anti-EndoPDI Monoclonal Antibody, Clone 2E7/7. Tissue: Cervical cancer cell line (HeLa). Species: Human. Fixation: 4% Formaldehyde for 15 min at RT. Primary Antibody: Mouse Anti-EndoPDI Monoclonal Antibody at 1:100 for 60 min at RT. Secondary Antibody: Goat Anti-Mouse ATTO 488 at 1:100 for 60 min at RT. Counterstain: DAPI (blue) nuclear stain at 1:5000 for 5 min RT. Localization: Nucleus, Endoplasmic Reticulum, Endoplasmic Reticulum Lumen. Magnification: 60X.

**Biorbyt Ltd.**

7 Signet Court, Swann Road  
Cambridge  
CB5 8LA  
United Kingdom

Email: [info@biorbyt.com](mailto:info@biorbyt.com), [support@biorbyt.com](mailto:support@biorbyt.com)

Phone: [+44 \(0\)1223 859353](tel:+44(0)1223859353) | Fax: [+1 \(415\) 651-8558](tel:+1(415)651-8558)

**Biorbyt LLC**

68 TW Alexander Drive  
Research Triangle Park  
Durham  
NC 27713  
United States

Email: [info@biorbyt.com](mailto:info@biorbyt.com), [support@biorbyt.com](mailto:support@biorbyt.com)

Phone: [+1 \(415\) 906-5211](tel:+1(415)906-5211) | Fax: [+1 \(415\) 651-8558](tel:+1(415)651-8558)