

Product Datasheet

Progesterone Receptor (Phospho-Ser190) Antibody (orb14799)

Catalog Number	orb14799
Category	Antibodies
Description	Progesterone Receptor (Phospho-Ser190) Antibody
Clonality	Polyclonal
Species/Host	Rabbit
Conjugation	Unconjugated
Reactivity	Human
UniProt ID	P06401
RRID	AB_10748922
Tested applications	IF, IHC, WB
Antibody Type	Primary Antibody
Storage	Maintain refrigerated at 2-8°C for up to 2 weeks. For long term storage store at -20°C in small aliquots to prevent freeze-thaw cycles.
Note	For research use only
Expiration Date	12 months from date of receipt.

Biorbyt Ltd.

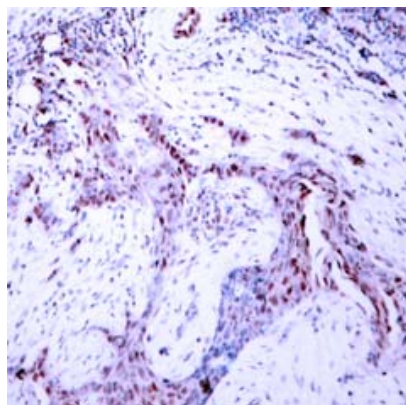
7 Signet Court, Swann Road
Cambridge
CB5 8LA
United Kingdom

Email: info@biorbyt.com, support@biorbyt.com
Phone: [+44 \(0\)1223 859353](tel:+44(0)1223859353) | Fax: [+1 \(415\) 651-8558](tel:+1(415)651-8558)

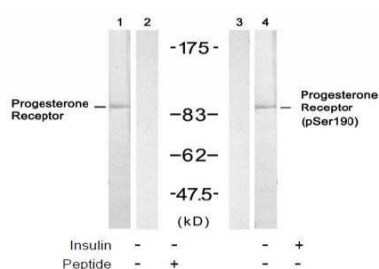
Biorbyt LLC

68 TW Alexander Drive
Research Triangle Park
Durham
NC 27713
United States

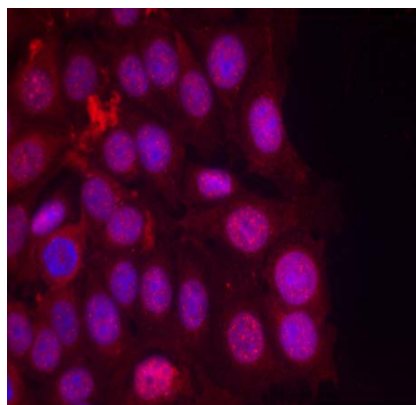
Email: info@biorbyt.com, support@biorbyt.com
Phone: [+1 \(415\) 906-5211](tel:+1(415)906-5211) | Fax: [+1 \(415\) 651-8558](tel:+1(415)651-8558)



Immunohistochemical analysis of paraffin- embedded human breast carcinoma tissue, using Progesterone Receptor (phospho-Ser190) antibody



Western blot analysis of extract from SKOV3 cell untreated or treated with insulin, using Progesterone Receptor antibody (orb14481, Lane 1 and 2) and Progesterone Receptor (phospho-Ser190) antibody (orb14799, Lane 3 and 4)



Immunofluorescence staining of methanol-fixed MCF7 cells using Progesterone Receptor (phospho-Ser190) antibody (orb14799, red)

Biorbyt Ltd.

7 Signet Court, Swann Road
Cambridge
CB5 8LA
United Kingdom

Email: info@biorbyt.com, support@biorbyt.com

Phone: +44 (0)1223 859353 | Fax: +1 (415) 651-8558

Biorbyt LLC

68 TW Alexander Drive
Research Triangle Park
Durham
NC 27713
United States

Email: info@biorbyt.com, support@biorbyt.com

Phone: +1 (415) 906-5211 | Fax: +1 (415) 651-8558