

Product Datasheet

Goat Rabbit IgG (H+L) Secondary Antibody (Biotin) (orb1474935)

Catalog Number	orb1474935
Category	Antibodies
Description	Goat Rabbit IgG (H+L) Secondary Antibody (Biotin)
Clonality	Polyclonal
Species/Host	Goat
Conjugation	Biotin
Reactivity	Rabbit
Concentration	1mg/ml
Immunogen	Rabbit IgG (whole molecule).
Tested applications	ELISA, IHC
Specificity	This biotin conjugated antibody is specific for rabbit IgG and shows no cross-reactivity with bovine/mouse IgG.
Antibody Type	Secondary Antibody
Storage	At -20°C for one year from date of receipt. Avoid repeated freezing and thawing.
Note	For research use only
Expiration Date	12 months from date of receipt.

Biorbyt Ltd.

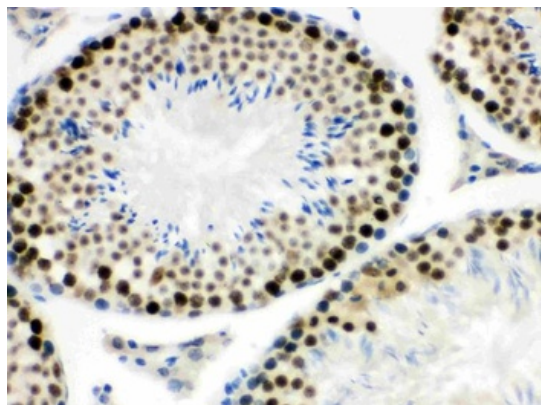
7 Signet Court, Swann Road
Cambridge
CB5 8LA
United Kingdom

Email: info@biorbyt.com, support@biorbyt.com
Phone: [+44 \(0\)1223 859353](tel:+44(0)1223859353) | Fax: [+1 \(415\) 651-8558](tel:+1(415)651-8558)

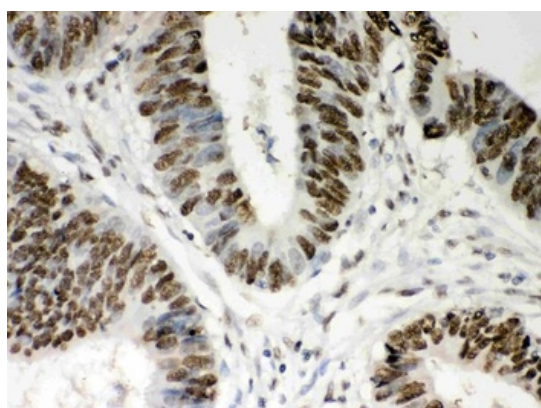
Biorbyt LLC

68 TW Alexander Drive
Research Triangle Park
Durham
NC 27713
United States

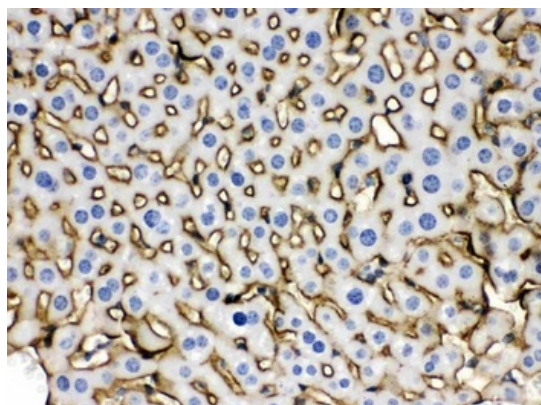
Email: info@biorbyt.com, support@biorbyt.com
Phone: [+1 \(415\) 906-5211](tel:+1(415)906-5211) | Fax: [+1 \(415\) 651-8558](tel:+1(415)651-8558)



IHC analysis of mouse testis tissues using rabbit anti-MNAT1 Antigen Affinity purified polyclonal antibody. Biotin Conjugated Goat Anti-rabbit IgG (H+L) secondary antibody was used to detect the primary antibody.



IHC analysis of human intestinal cancer tissues using rabbit anti-Nucleophosmin Antigen Affinity purified polyclonal antibody. Biotin Conjugated Goat Anti-rabbit IgG (H+L) secondary antibody was used to detect the primary antibody.



IHC analysis of mouse liver tissues using rabbit anti-SLC10A1 Antigen Affinity purified polyclonal antibody. Biotin Conjugated Goat Anti-rabbit IgG (H+L) secondary antibody was used to detect the primary antibody.

Biorbyt Ltd.

7 Signet Court, Swann Road
Cambridge
CB5 8LA
United Kingdom

Email: info@biorbyt.com, support@biorbyt.com

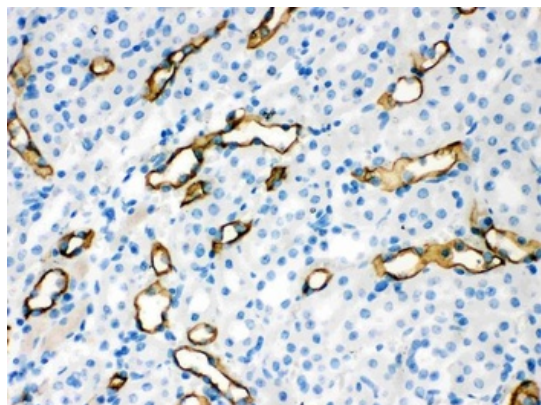
Phone: [+44 \(0\)1223 859353](tel:+44(0)1223859353) | Fax: [+1 \(415\) 651-8558](tel:+1(415)651-8558)

Biorbyt LLC

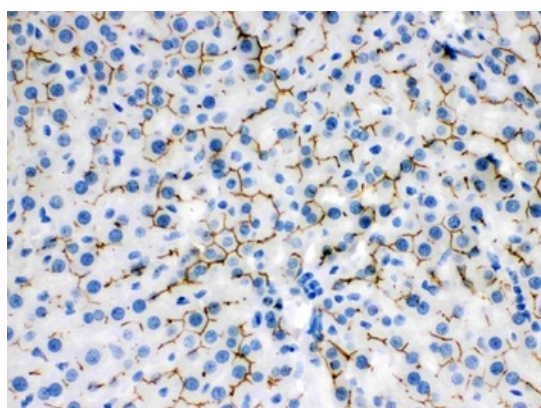
68 TW Alexander Drive
Research Triangle Park
Durham
NC 27713
United States

Email: info@biorbyt.com, support@biorbyt.com

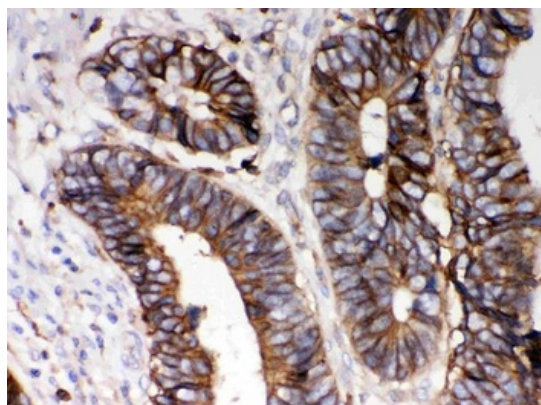
Phone: [+1 \(415\) 906-5211](tel:+1(415)906-5211) | Fax: [+1 \(415\) 651-8558](tel:+1(415)651-8558)



IHC analysis of mouse kidney tissues using rabbit anti-Aquaporin 1 Antigen Affinity purified polyclonal antibody. Biotin Conjugated Goat Anti-rabbit IgG (H+L) secondary antibody was used to detect the primary antibody.



IHC analysis of rat liver tissues using rabbit anti-ABCB11 Antigen Affinity purified polyclonal antibody. Biotin Conjugated Goat Anti-rabbit IgG (H+L) secondary antibody was used to detect the primary antibody.



IHC analysis of human intestinal cancer tissues using rabbit anti-HLA A Antigen Affinity purified polyclonal antibody. Biotin Conjugated Goat Anti-rabbit IgG (H+L) secondary antibody was used to detect the primary antibody.

Biorbyt Ltd.

7 Signet Court, Swann Road
Cambridge
CB5 8LA
United Kingdom

Email: info@biorbyt.com, support@biorbyt.com

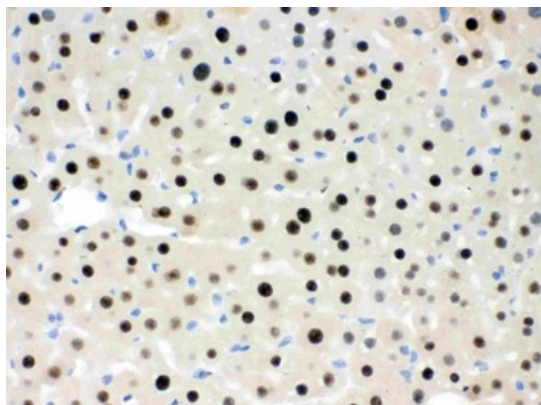
Phone: +44 (0)1223 859353 | Fax: +1 (415) 651-8558

Biorbyt LLC

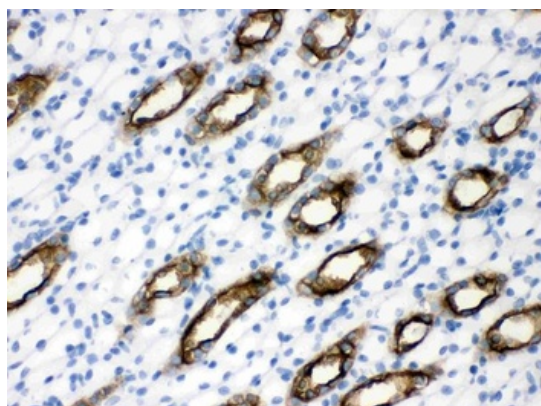
68 TW Alexander Drive
Research Triangle Park
Durham
NC 27713
United States

Email: info@biorbyt.com, support@biorbyt.com

Phone: +1 (415) 906-5211 | Fax: +1 (415) 651-8558



IHC analysis of mouse liver tissues using rabbit anti-RbAp48 Antigen Affinity purified polyclonal antibody. Biotin Conjugated Goat Anti-rabbit IgG (H+L) secondary antibody was used to detect the primary antibody.



IHC analysis of rat kidney tissues using rabbit anti-Aquaporin 2 Antigen Affinity purified polyclonal antibody. Biotin Conjugated Goat Anti-rabbit IgG (H+L) secondary antibody was used to detect the primary antibody.

Biorbyt Ltd.

7 Signet Court, Swann Road
Cambridge
CB5 8LA
United Kingdom

Email: info@biorbyt.com, support@biorbyt.com

Phone: [+44 \(0\)1223 859353](tel:+44(0)1223859353) | Fax: [+1 \(415\) 651-8558](tel:+1(415)651-8558)

Biorbyt LLC

68 TW Alexander Drive
Research Triangle Park
Durham
NC 27713
United States

Email: info@biorbyt.com, support@biorbyt.com

Phone: [+1 \(415\) 906-5211](tel:+1(415)906-5211) | Fax: [+1 \(415\) 651-8558](tel:+1(415)651-8558)