

Product Datasheet

NUP50 Mouse Monoclonal Antibody (orb1473636)

Catalog Number	orb1473636
Category	Antibodies
Description	The NUP50 Antibody is suitable for WB. It is a Monoclonal, Unconjugated antibody which raised against Recombinant fusion protein of human NUP50. The exact sequence is proprietary.
Target	NUP50
Clonality	Monoclonal
Species/Host	Mouse
Isotype	Mouse IgG1 kappa
Conjugation	Unconjugated
Reactivity	Human
Buffer/Preservatives	crude ascites with 0.01% sodium azide.
Immunogen	Recombinant fusion protein of human NUP50. The exact sequence is proprietary.
UniProt ID	Q9UKX7
Tested applications	WB
Dilution range	WB (1/500 - 1/1000)
Specificity	Recognizes endogenous levels of NUP50 protein.
Antibody Type	Primary Antibody

Biorbyt Ltd.

7 Signet Court, Swann Road
Cambridge
CB5 8LA
United Kingdom

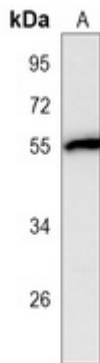
Email: info@biorbyt.com, support@biorbyt.com
Phone: [+44 \(0\)1223 859353](tel:+44(0)1223859353) | Fax: [+1 \(415\) 651-8558](tel:+1(415)651-8558)

Biorbyt LLC

68 TW Alexander Drive
Research Triangle Park
Durham
NC 27713
United States

Email: info@biorbyt.com, support@biorbyt.com
Phone: [+1 \(415\) 906-5211](tel:+1(415)906-5211) | Fax: [+1 \(415\) 651-8558](tel:+1(415)651-8558)

Storage	Maintain refrigerated at 2-8°C for up to 2 weeks. For long term storage store at -20°C in small aliquots to prevent freeze-thaw cycles.
Note	For research use only
Entrez	10762
Expiration Date	12 months from date of receipt.



Western blot analysis of NUP50 expression in Jurkat (A) whole cell lysates. (Predicted band size: 50 kD; Observed band size: 55 kD)

Biorbyt Ltd.

7 Signet Court, Swann Road
Cambridge
CB5 8LA
United Kingdom

Email: info@biorbyt.com, support@biorbyt.com

Phone: [+44 \(0\)1223 859353](tel:+44(0)1223859353) | Fax: [+1 \(415\) 651-8558](tel:+1(415)651-8558)

Biorbyt LLC

68 TW Alexander Drive
Research Triangle Park
Durham
NC 27713
United States

Email: info@biorbyt.com, support@biorbyt.com

Phone: [+1 \(415\) 906-5211](tel:+1(415)906-5211) | Fax: [+1 \(415\) 651-8558](tel:+1(415)651-8558)