

## Product Datasheet

# PP2A alpha/beta Rabbit mAb Antibody (orb1472338)

<b>Catalog Number</b>	orb1472338
<b>Category</b>	Antibodies
<b>Description</b>	PP2A alpha/beta Rabbit mAb Antibody
<b>Clonality</b>	Monoclonal
<b>Species/Host</b>	Rabbit
<b>Conjugation</b>	Unconjugated
<b>Reactivity</b>	Human, Mouse, Rat
<b>UniProt ID</b>	<b>P67775</b>
<b>Tested applications</b>	IF, IHC, WB
<b>Antibody Type</b>	Recombinant Antibody
<b>Storage</b>	Maintain refrigerated at 2-8°C for up to 2 weeks. For long term storage store at -20°C in small aliquots to prevent freeze-thaw cycles.
<b>Note</b>	For research use only
<b>Expiration Date</b>	12 months from date of receipt.

### Biorbyt Ltd.

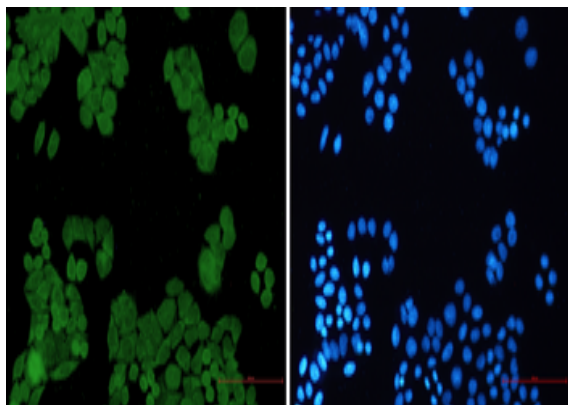
7 Signet Court, Swann Road  
Cambridge  
CB5 8LA  
United Kingdom

Email: [info@biorbyt.com](mailto:info@biorbyt.com), [support@biorbyt.com](mailto:support@biorbyt.com)  
Phone: [+44 \(0\)1223 859353](tel:+44(0)1223859353) | Fax: [+1 \(415\) 651-8558](tel:+1(415)651-8558)

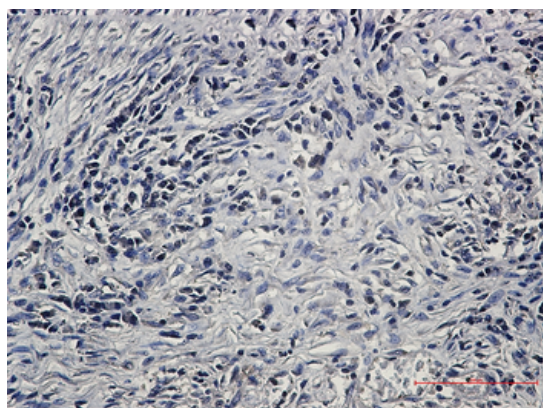
### Biorbyt LLC

68 TW Alexander Drive  
Research Triangle Park  
Durham  
NC 27713  
United States

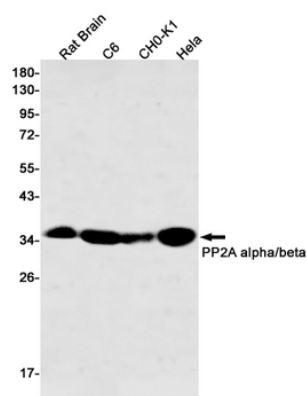
Email: [info@biorbyt.com](mailto:info@biorbyt.com), [support@biorbyt.com](mailto:support@biorbyt.com)  
Phone: [+1 \(415\) 906-5211](tel:+1(415)906-5211) | Fax: [+1 \(415\) 651-8558](tel:+1(415)651-8558)



Immunocytochemistry of PP2A alpha/beta (green) in HeLa using PP2A alpha/beta Rabbit mAb at dilution 1/5, and DAPI (blue).



Immunohistochemistry of PP2A alpha/beta in paraffin-embedded Human lung cancer tissue using PP2A alpha/beta Rabbit mAb at dilution 1/50.



Western blot detection of PP2A alpha/beta in Rat Brain, C6, CHO-K1, HeLa cell lysates using PP2A alpha/beta Rabbit mAb (1:500 diluted). Predicted band size: 36 kDa. Observed band size: 36 kDa.

**Biorbyt Ltd.**

7 Signet Court, Swann Road  
Cambridge  
CB5 8LA  
United Kingdom

Email: [info@biorbyt.com](mailto:info@biorbyt.com), [support@biorbyt.com](mailto:support@biorbyt.com)

Phone: +44 (0)1223 859353 | Fax: +1 (415) 651-8558

**Biorbyt LLC**

68 TW Alexander Drive  
Research Triangle Park  
Durham  
NC 27713  
United States

Email: [info@biorbyt.com](mailto:info@biorbyt.com), [support@biorbyt.com](mailto:support@biorbyt.com)

Phone: +1 (415) 906-5211 | Fax: +1 (415) 651-8558