

## Product Datasheet

### LAMP1 Antibody (APC) (orb147227)

<b>Catalog Number</b>	orb147227
<b>Category</b>	Antibodies
<b>Description</b>	<p>Mouse monoclonal to LAMP1 (APC). Lysosome associated membrane proteins, or LAMP1 and LAMP2, are major constituents of the lysosomal membrane. The two have closely related structures, with 37% sequence homology. They are both transmembrane glycoproteins that are localized primarily in lysosomes and late endosomes. Newly synthesized molecules are mostly transported from the trans-Golgi network directly to endosomes and then to lysosomes. A second pathway involves the lamps being delivered from the Golgi to the cell surface, and then along the endocytic pathway to the lysosomes. A minor pathway involves transport via the plasma membrane. Upon stimulation, a rapid translocation of intracellular LAMPs to the cell membrane is dependent on a carboxylterminal tyrosine based motif (YXXI). If there is a disturbance in this spacing, lysosome localization of LAMP1 is abolished and the mutant protein then cycles between the membrane and the endosome. This stimulation has also been shown to have an associated release of histamine, leukotriene C and prostaglandin D, which shows that LAMP-1 and LAMP-2 are activation markers for normal mast cells. They have also been linked to the inflammatory response in that they promote adhesion of human peripheral blood mononuclear cells (PBMC) to vascular endothelium, and therefore possibly the adhesion of PBMC to the site of inflammation..</p>
<b>Target</b>	LAMP1
<b>Clonality</b>	Monoclonal
<b>Species/Host</b>	Mouse
<b>Isotype</b>	IgG1
<b>Conjugation</b>	APC
<b>Reactivity</b>	Hamster, Human, Mouse, Rat

**Biorbyt Ltd.**

7 Signet Court, Swann Road  
Cambridge  
CB5 8LA  
United Kingdom

Email: [info@biorbyt.com](mailto:info@biorbyt.com), [support@biorbyt.com](mailto:support@biorbyt.com)

Phone: [+44 \(0\)1223 859353](tel:+44(0)1223859353) | Fax: [+1 \(415\) 651-8558](tel:+1(415)651-8558)

**Biorbyt LLC**

68 TW Alexander Drive  
Research Triangle Park  
Durham  
NC 27713  
United States

Email: [info@biorbyt.com](mailto:info@biorbyt.com), [support@biorbyt.com](mailto:support@biorbyt.com)

Phone: [+1 \(415\) 906-5211](tel:+1(415)906-5211) | Fax: [+1 \(415\) 651-8558](tel:+1(415)651-8558)

<b>Concentration</b>	1 mg/ml
<b>Buffer/Preservatives</b>	95.46mM Phosphate, 2.48mM MES and 2mM EDTA
<b>Purification</b>	Protein G Purified
<b>Immunogen</b>	Rat liver lysosomal membrane preparations
<b>UniProt ID</b>	<b>P14562</b>
<b>MW</b>	120kDa
<b>Tested applications</b>	ICC, IF, IP, WB
<b>Dilution range</b>	WB (1:1000), ICC/IF (1:1000)
<b>Application notes</b>	1 µg/ml was sufficient for detection of LAMP1 in rat liver microsome by ECL immunoblot analysis.
<b>Specificity</b>	Detects ~120kDa.
<b>Clone Number</b>	Ly1C6
<b>Storage</b>	Conjugated antibodies should be stored according to the product label
<b>Note</b>	For research use only
<b>Entrez</b>	<b>25328</b>
<b>NCBI</b>	<b>NP_036989.1</b>
<b>Expiration Date</b>	12 months from date of receipt.

**Biorbyt Ltd.**

7 Signet Court, Swann Road  
Cambridge  
CB5 8LA  
United Kingdom

Email: [info@biorbyt.com](mailto:info@biorbyt.com), [support@biorbyt.com](mailto:support@biorbyt.com)

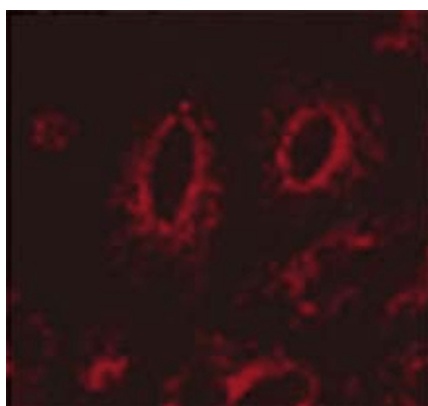
Phone: [+44 \(0\)1223 859353](tel:+44(0)1223859353) | Fax: [+1 \(415\) 651-8558](tel:+1(415)651-8558)

**Biorbyt LLC**

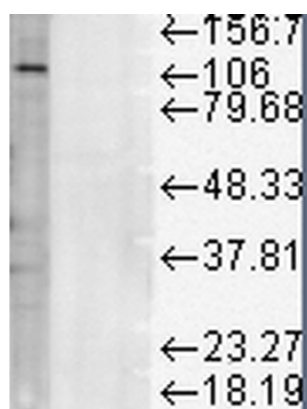
68 TW Alexander Drive  
Research Triangle Park  
Durham  
NC 27713  
United States

Email: [info@biorbyt.com](mailto:info@biorbyt.com), [support@biorbyt.com](mailto:support@biorbyt.com)

Phone: [+1 \(415\) 906-5211](tel:+1(415)906-5211) | Fax: [+1 \(415\) 651-8558](tel:+1(415)651-8558)



Immunocytochemistry/Immunofluorescence analysis using Mouse Anti-LAMP1 Monoclonal Antibody, Clone Ly1C6. Tissue: transfected HeLa cells. Species: Human. Primary Antibody: Mouse Anti-LAMP1 Monoclonal Antibody at 1:1000. Secondary Antibody: APC Goat Anti-Mouse (red).



Western Blot analysis of Rat liver microsomes showing detection of LAMP1 protein using Mouse Anti-LAMP1 Monoclonal Antibody, Clone Ly1C6. Load: 15 µg. Block: 1.5% BSA for 30 minutes at RT. Primary Antibody: Mouse Anti-LAMP1 Monoclonal Antibody at 1:1000 for 2 hours at RT. Secondary Antibody: Sheep Anti-Mouse IgG: HRP for 1 hour at RT.

**Biorbyt Ltd.**

7 Signet Court, Swann Road  
Cambridge  
CB5 8LA  
United Kingdom

Email: [info@biorbyt.com](mailto:info@biorbyt.com), [support@biorbyt.com](mailto:support@biorbyt.com)

Phone: [+44 \(0\)1223 859353](tel:+44(0)1223859353) | Fax: [+1 \(415\) 651-8558](tel:+1(415)6518558)

**Biorbyt LLC**

68 TW Alexander Drive  
Research Triangle Park  
Durham  
NC 27713  
United States

Email: [info@biorbyt.com](mailto:info@biorbyt.com), [support@biorbyt.com](mailto:support@biorbyt.com)

Phone: [+1 \(415\) 906-5211](tel:+1(415)9065211) | Fax: [+1 \(415\) 651-8558](tel:+1(415)6518558)