

Product Datasheet

Human CXCL3 (N-6His) Protein (orb1471728)

Catalog Number	orb1471728
Category	Proteins
Description	Recombinant Human C-X-C Motif Chemokine 3 is produced by our E.coli expression system and the target gene encoding Ala35-Asn107 is expressed with a 6His tag at the N-terminus.
Target	CXCL3
Conjugation	Unconjugated
Tag	C-Human Fc tag
Reactivity	Canine
Form/Appearance	Lyophilized from sterile PBS, pH 7.4. Normally 5 % - 8% trehalose is added as protectants before lyophilization. Please see Certificate of Analysis for specific instructions of reconstitution.
Buffer/Preservatives	Lyophilized from a 0.2 µm filtered solution of PBS, pH 7.4.
Reconstitution	Lyophilized from a 0.2 µm filtered solution of PBS, pH 7.4.
Purity	Greater than 95% as determined by reducing SDS-PAGE.
Purification	Affinity purification
UniProt ID	P19876
MW	10.1 KDa
Expression System	E.coli
Source	Mammalian

Biorbyt Ltd.

7 Signet Court, Swann Road
Cambridge
CB5 8LA
United Kingdom

Email: info@biorbyt.com, support@biorbyt.com

Phone: [+44 \(0\)1223 859353](tel:+44(0)1223859353) | Fax: [+1 \(415\) 651-8558](tel:+1(415)651-8558)

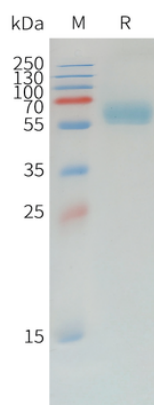
Biorbyt LLC

68 TW Alexander Drive
Research Triangle Park
Durham
NC 27713
United States

Email: info@biorbyt.com, support@biorbyt.com

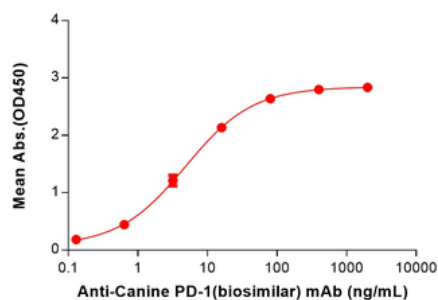
Phone: [+1 \(415\) 906-5211](tel:+1(415)906-5211) | Fax: [+1 \(415\) 651-8558](tel:+1(415)651-8558)

Expression Region	Not available
Storage	Store at -20°C to -80°C for 12 months in lyophilized form. After reconstitution, if not intended for use within a month, aliquot and store at -80°C (Avoid repeated freezing and thawing). Lyophilized proteins are shipped at ambient temperature.
Note	For research use only
Expiration Date	6 months from date of receipt.



Canine PD-1 Protein, hFc Tag on SDS-PAGE under reducing condition.

Canine PD-1, hFc Tagged protein ELISA
0.2 µg of Canine PD-1, hFc tagged protein per well



ELISA plate pre-coated by 2 µg/mL (100 µL/well) Canine PD-1 Protein, hFc Tag (orb2321232) can bind Anti-Canine PD-1 (INTERVET 4F12) mAb (orb2321976) in a linear range of 0.64–80 ng/ml.

Biorbyt Ltd.

7 Signet Court, Swann Road
Cambridge
CB5 8LA
United Kingdom

Email: info@biorbyt.com, support@biorbyt.com
Phone: [+44 \(0\)1223 859353](tel:+44(0)1223859353) | Fax: [+1 \(415\) 651-8558](tel:+1(415)651-8558)

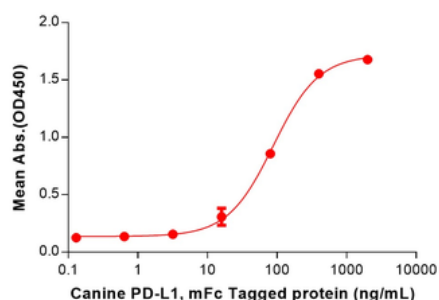
Biorbyt LLC

68 TW Alexander Drive
Research Triangle Park
Durham
NC 27713
United States

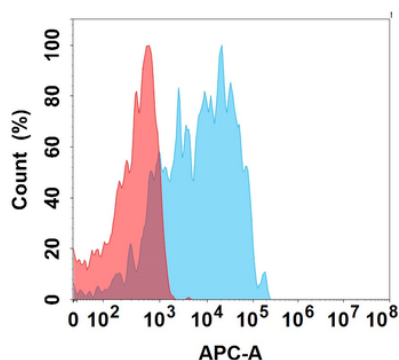
Email: info@biorbyt.com, support@biorbyt.com
Phone: [+1 \(415\) 906-5211](tel:+1(415)906-5211) | Fax: [+1 \(415\) 651-8558](tel:+1(415)651-8558)

Canine PD-1, hFc Tagged protein ELISA

0.2 µg of Canine PD-1, hFc tagged protein per well



ELISA plate pre-coated by 2 µg/mL (100 µL/well) Canine PD-1 Protein, hFc Tag (orb2321232) can bind Canine PD-L1 Protein, mFc Tag (orb2321233) in a linear range of 16–400 ng/ml.



Flow cytometry analysis with 1 µg/mL Canine PD-1 Protein, hFc Tag (orb2321232) on Expi293 cells transfected with Canine PD-L1 protein (Blue histogram) or Expi293 transfected with irrelevant protein (Red histogram).

Biorbyt Ltd.

7 Signet Court, Swann Road
Cambridge
CB5 8LA
United Kingdom

Email: info@biorbyt.com, support@biorbyt.com

Phone: +44 (0)1223 859353 | Fax: +1 (415) 651-8558

Biorbyt LLC

68 TW Alexander Drive
Research Triangle Park
Durham
NC 27713
United States

Email: info@biorbyt.com, support@biorbyt.com

Phone: +1 (415) 906-5211 | Fax: +1 (415) 651-8558