

## Product Datasheet

### CCL27 Antibody (C-term) (orb1434788)

|                            |                                                                                                                                                                              |
|----------------------------|------------------------------------------------------------------------------------------------------------------------------------------------------------------------------|
| <b>Catalog Number</b>      | orb1434788                                                                                                                                                                   |
| <b>Category</b>            | Antibodies                                                                                                                                                                   |
| <b>Description</b>         | Rabbit polyclonal antibody to CCL27.                                                                                                                                         |
| <b>Target</b>              | CCL27                                                                                                                                                                        |
| <b>Clonality</b>           | Polyclonal                                                                                                                                                                   |
| <b>Species/Host</b>        | Rabbit                                                                                                                                                                       |
| <b>Isotype</b>             | Rabbit IgG                                                                                                                                                                   |
| <b>Conjugation</b>         | Unconjugated                                                                                                                                                                 |
| <b>Reactivity</b>          | Human                                                                                                                                                                        |
| <b>Form/Appearance</b>     | Purified polyclonal antibody supplied in PBS with 0.09% (W/V) sodium azide. This antibody is purified through a protein A column, followed by peptide affinity purification. |
| <b>Immunogen</b>           | Synthetic Peptide                                                                                                                                                            |
| <b>UniProt ID</b>          | <b>Q9Y4X3</b>                                                                                                                                                                |
| <b>MW</b>                  | 12618                                                                                                                                                                        |
| <b>Tested applications</b> | WB                                                                                                                                                                           |
| <b>Dilution range</b>      | WB - 1:1000                                                                                                                                                                  |
| <b>Clone Number</b>        | BTD58198                                                                                                                                                                     |

**Biorbyt Ltd.**

7 Signet Court, Swann Road  
Cambridge  
CB5 8LA  
United Kingdom

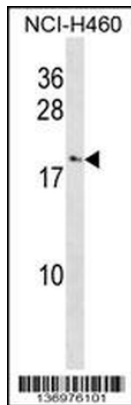
Email: [info@biorbyt.com](mailto:info@biorbyt.com), [support@biorbyt.com](mailto:support@biorbyt.com)  
Phone: [+44 \(0\)1223 859353](tel:+44(0)1223859353) | Fax: [+1 \(415\) 651-8558](tel:+1(415)651-8558)

**Biorbyt LLC**

68 TW Alexander Drive  
Research Triangle Park  
Durham  
NC 27713  
United States

Email: [info@biorbyt.com](mailto:info@biorbyt.com), [support@biorbyt.com](mailto:support@biorbyt.com)  
Phone: [+1 \(415\) 906-5211](tel:+1(415)906-5211) | Fax: [+1 \(415\) 651-8558](tel:+1(415)651-8558)

|                        |                                                                                                                                        |
|------------------------|----------------------------------------------------------------------------------------------------------------------------------------|
| <b>Storage</b>         | Maintain refrigerated at 2-8°C for up to 2 weeks. For long term storage store at -20°C in small aliquots to prevent freeze-thaw cycles |
| <b>Note</b>            | For research use only                                                                                                                  |
| <b>NCBI</b>            | <b>NP_006655.1</b>                                                                                                                     |
| <b>Expiration Date</b> | 12 months from date of receipt.                                                                                                        |



CCL27 Antibody (C-term) western blot analysis in NCI-H460 cell line lysates (35 ug/lane). This demonstrates the CCL27 antibody detected the CCL27 protein (arrow).

**Biorbyt Ltd.**

7 Signet Court, Swann Road  
Cambridge  
CB5 8LA  
United Kingdom

Email: [info@biorbyt.com](mailto:info@biorbyt.com), [support@biorbyt.com](mailto:support@biorbyt.com)

Phone: [+44 \(0\)1223 859353](tel:+44(0)1223859353) | Fax: [+1 \(415\) 651-8558](tel:+1(415)651-8558)

**Biorbyt LLC**

68 TW Alexander Drive  
Research Triangle Park  
Durham  
NC 27713  
United States

Email: [info@biorbyt.com](mailto:info@biorbyt.com), [support@biorbyt.com](mailto:support@biorbyt.com)

Phone: [+1 \(415\) 906-5211](tel:+1(415)906-5211) | Fax: [+1 \(415\) 651-8558](tel:+1(415)651-8558)