

Product Datasheet

SLC22A8 Rabbit Polyclonal Antibody (orb136646)

Catalog Number	orb136646
Category	Antibodies
Description	SLC22A8 Rabbit Polyclonal Antibody
Target	SLC22A8
Clonality	Polyclonal
Species/Host	Rabbit
Isotype	IgG
Conjugation	Unconjugated
Reactivity	Guinea pig, Human, Mouse, Rat
Form/Appearance	10 mM PBS, 0.02% sodium azide
Concentration	- 100 µg (in 200 µl): 0.5 mg/ml- 200 µg (in 400 µl): 0.5 mg/ml
Purity	Polyclonal antibodies are purified by peptide affinity chromatography
Immunogen	KLH conjugated synthetic peptide derived from human SLC22A8. Please contact us for the exact immunogen sequence. The peptide is available as orb12937.
UniProt ID	Q8TCC7
MW	60 kDa
Tested applications	ICC, IF, IHC-P, WB
Dilution range	IF/ICC: 1:50-400, IHC-P: 1:50-400, WB: 1:200-2000

Biorbyt Ltd.

7 Signet Court, Swann Road
Cambridge
CB5 8LA
United Kingdom

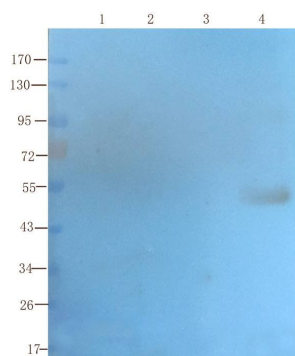
Email: info@biorbyt.com, support@biorbyt.com
Phone: [+44 \(0\)1223 859353](tel:+44(0)1223859353) | Fax: [+1 \(415\) 651-8558](tel:+1(415)651-8558)

Biorbyt LLC

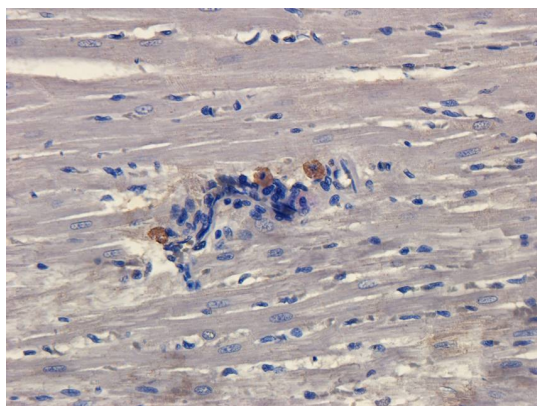
68 TW Alexander Drive
Research Triangle Park
Durham
NC 27713
United States

Email: info@biorbyt.com, support@biorbyt.com
Phone: [+1 \(415\) 906-5211](tel:+1(415)906-5211) | Fax: [+1 \(415\) 651-8558](tel:+1(415)651-8558)

Storage	Maintain refrigerated at 2-8°C for up to 2 weeks. For long term storage store at -20°C in small aliquots to prevent freeze-thaw cycles.
Note	For research use only
Entrez	9376
Expiration Date	12 months from date of receipt.



WB analysis of mouse brain (lane 1), rat heart (lane 2), mouse kidney (lane 3), human breast cancer (lane 4) using SLC22A8 antibody (1 ug/ml)



Immunohistochemical staining of paraffin embedded rat heart tissue using anti-SLC22A8 (primary antibody at 2.5 ug/ml)

Biorbyt Ltd.

7 Signet Court, Swann Road
Cambridge
CB5 8LA
United Kingdom

Email: info@biorbyt.com, support@biorbyt.com

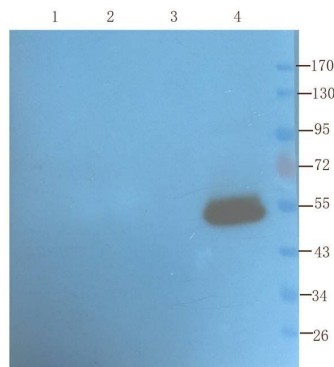
Phone: +44 (0)1223 859353 | Fax: +1 (415) 651-8558

Biorbyt LLC

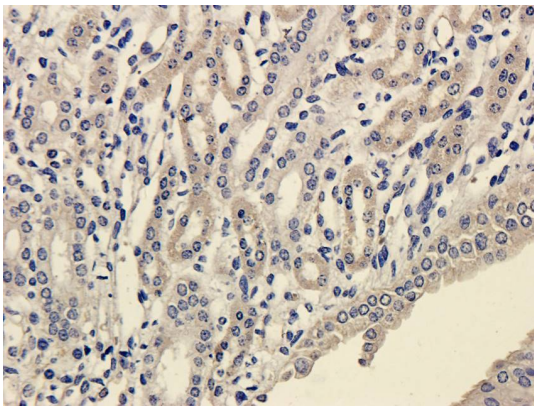
68 TW Alexander Drive
Research Triangle Park
Durham
NC 27713
United States

Email: info@biorbyt.com, support@biorbyt.com

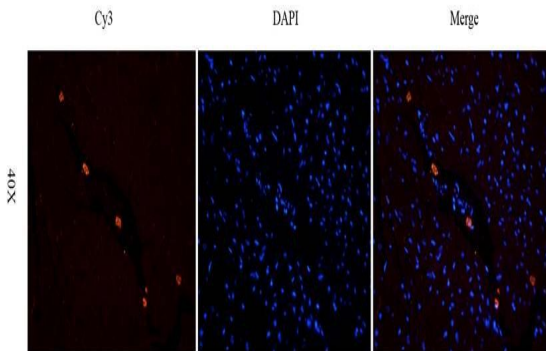
Phone: +1 (415) 906-5211 | Fax: +1 (415) 651-8558



Western blot analysis of mouse brain (lane 1), rat heart (lane 2), mouse kidney (lane 3), human breast cancer (lane 4) using SLC22A8 antibody (1 ug/ml)



IHC-P staining of guinea pig kidney tissue using SLC22A8 antibody (dilution at 2.5 ug/ml)



IF image of rat heart tissue using SLC22A8 antibody (primary antibody at 2.5 ug/ml)

Biorbyt Ltd.

7 Signet Court, Swann Road
Cambridge
CB5 8LA
United Kingdom

Email: info@biorbyt.com, support@biorbyt.com

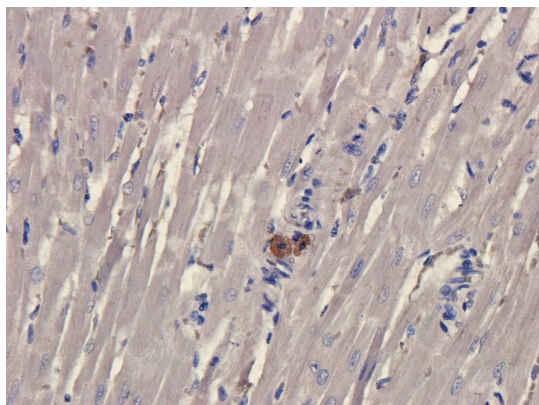
Phone: +44 (0)1223 859353 | Fax: +1 (415) 651-8558

Biorbyt LLC

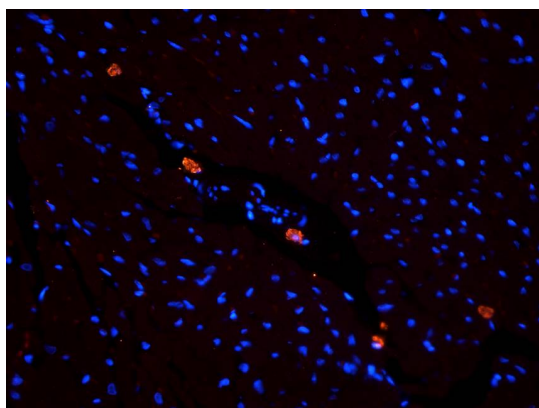
68 TW Alexander Drive
Research Triangle Park
Durham
NC 27713
United States

Email: info@biorbyt.com, support@biorbyt.com

Phone: +1 (415) 906-5211 | Fax: +1 (415) 651-8558



Immunohistochemical staining of rat heart tissue using SLC22A8 antibody (dilution of primary antibody - 2.5 ug/ml)



Immunofluorescence image of rat heart tissue using SLC22A8 antibody (dilution at 2.5 ug/ml)

Biorbyt Ltd.

7 Signet Court, Swann Road
Cambridge
CB5 8LA
United Kingdom

Email: info@biorbyt.com, support@biorbyt.com

Phone: [+44 \(0\)1223 859353](tel:+44(0)1223859353) | Fax: [+1 \(415\) 651-8558](tel:+1(415)651-8558)

Biorbyt LLC

68 TW Alexander Drive
Research Triangle Park
Durham
NC 27713
United States

Email: info@biorbyt.com, support@biorbyt.com

Phone: [+1 \(415\) 906-5211](tel:+1(415)906-5211) | Fax: [+1 \(415\) 651-8558](tel:+1(415)651-8558)