

## Product Datasheet

# WIPI2 Human Over-expression Lysate (orb1363453)

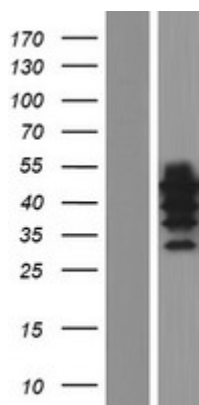
<b>Catalog Number</b>	orb1363453
<b>Description</b>	WIPI2 HEK293T cell transient overexpression lysate (as WB positive control)
<b>Target</b>	WIPI2
<b>Storage</b>	Ship at ambient temperature. Upon receiving, store the sample at -20°C. Lysate samples can be reconstituted with SDS Sample Buffer. Avoid repeated freeze-thaw cycles after reconstitution. Lysate samples are stable for 12 months from date of receipt when stored at -20°C.
<b>Tag</b>	C-Myc/DDK
<b>Note</b>	For research use only
<b>Source</b>	Human
<b>MW</b>	41.9 kDa
<b>Uniprot ID</b>	<a href="#">Q9Y4P8</a>
<b>NCBI</b>	<a href="#">NM_001033520</a> , <a href="#">NP_001028692</a>
<b>Expiration Date</b>	6 months from date of receipt.

### Biorbyt Ltd.

7 Signet Court, Swann's Road,  
Cambridge, CB5 8LA, United Kingdom  
Email: [info@biorbyt.com](mailto:info@biorbyt.com), [support@biorbyt.com](mailto:support@biorbyt.com)  
Phone: [+44 \(0\) 1223 859-353](tel:+44(0)1223859353) | Fax: [+1 \(415\) 651-8558](tel:+1(415)6518558)

### Biorbyt LLC.

68 TW Alexander Drive,  
Durham, NC, 27713, United States  
Email: [info@biorbyt.com](mailto:info@biorbyt.com), [support@biorbyt.com](mailto:support@biorbyt.com)  
Phone: [+1 \(415\) 906-5211](tel:+1(415)9065211) | Fax: [+1 \(415\) 651-8558](tel:+1(415)6518558)



Western blot validation of Left: Cell lysates from un-transfected HEK293T cells; Right: Cell lysates from HEK293T cells transfected with transfection reagent MegaTran 2.0) using WIPI2 Human Over-expression Lysate

**Biorbyt Ltd.**

7 Signet Court, Swann's Road,  
Cambridge, CB5 8LA, United Kingdom  
Email: [info@biorbyt.com](mailto:info@biorbyt.com), [support@biorbyt.com](mailto:support@biorbyt.com)  
Phone: [+44 \(0\) 1223 859-353](tel:+44(0)1223859353) | Fax: [+1 \(415\) 651-8558](tel:+1(415)6518558)

**Biorbyt LLC.**

68 TW Alexander Drive,  
Durham, NC, 27713, United States  
Email: [info@biorbyt.com](mailto:info@biorbyt.com), [support@biorbyt.com](mailto:support@biorbyt.com)  
Phone: [+1 \(415\) 906-5211](tel:+1(415)9065211) | Fax: [+1 \(415\) 651-8558](tel:+1(415)6518558)