

## Product Datasheet

### KLKB1 Rabbit Polyclonal Antibody (orb13526)

<b>Catalog Number</b>	orb13526
<b>Category</b>	Antibodies
<b>Description</b>	KLKB1 Rabbit Polyclonal Antibody is an unconjugated antibody that specifically recognizes KLK3. Generated against a KLH conjugated synthetic peptide derived from human KLKB1. The peptide is available as orb374768. It is supplied in liquid form and exhibits reactivity with Human, Mouse, Porcine and Rat samples. The suitable applications for this antibody are ELISA, IHC-P and WB.
<b>Target</b>	KLK3
<b>Clonality</b>	Polyclonal
<b>Species/Host</b>	Rabbit
<b>Isotype</b>	IgG
<b>Conjugation</b>	Unconjugated
<b>Reactivity</b>	Human, Mouse, Porcine, Rat
<b>Form/Appearance</b>	10 mM PBS, 0.02% sodium azide
<b>Concentration</b>	- 100 µg (in 200 µl): 0.5 mg/ml- 200 µg (in 400 µl): 0.5 mg/ml
<b>Purity</b>	Polyclonal antibodies are purified by peptide affinity chromatography
<b>Immunogen</b>	KLH conjugated synthetic peptide derived from human KLKB1. Please contact us for the exact immunogen sequence. The peptide is available as orb374768.
<b>UniProt ID</b>	<b>P03952</b>
<b>RRID</b>	AB_10767961

**Biorbyt Ltd.**

7 Signet Court, Swann Road  
Cambridge  
CB5 8LA  
United Kingdom

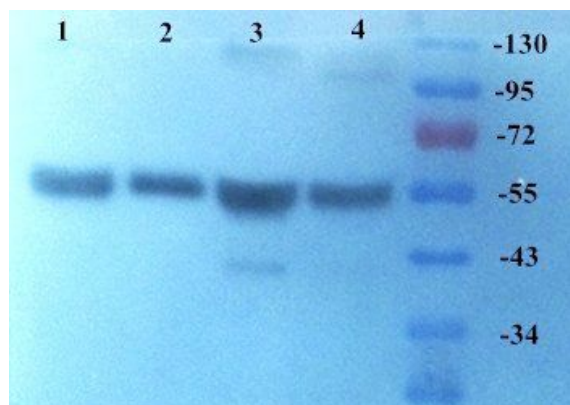
Email: [info@biorbyt.com](mailto:info@biorbyt.com), [support@biorbyt.com](mailto:support@biorbyt.com)  
Phone: [+44 \(0\)1223 859353](tel:+44(0)1223859353) | Fax: [+1 \(415\) 651-8558](tel:+1(415)651-8558)

**Biorbyt LLC**

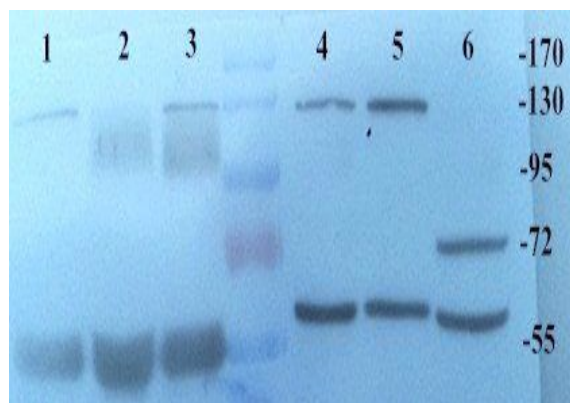
68 TW Alexander Drive  
Research Triangle Park  
Durham  
NC 27713-2847  
United States

Email: [info@biorbyt.com](mailto:info@biorbyt.com), [support@biorbyt.com](mailto:support@biorbyt.com)  
Phone: [+1 \(415\) 906-5211](tel:+1(415)906-5211) | Fax: [+1 \(415\) 651-8558](tel:+1(415)651-8558)

<b>MW</b>	29 kDa
<b>Tested applications</b>	ELISA, IHC-P, WB
<b>Dilution range</b>	WB:1:500, IHC-P:1:100
<b>Storage</b>	Maintain refrigerated at 2-8°C for up to 2 weeks. For long term storage store at -20°C in small aliquots to prevent freeze-thaw cycles.
<b>Note</b>	For research use only
<b>Expiration Date</b>	12 months from date of receipt.



Western blot analysis of human breast cancer (Lane 1), (Lane 2), (Lane 3), (Lane 4) using KLKB1 antibody (primary antibody at 1:500)



WB analysis of human, rat breast cancer (Lane 1), (Lane 2), (Lane 3), rat ovary (Lane 4), rat kidney (Lane 5), rat liver (Lane 6) using KLKB1 antibody (Dilution at 1:500)

**Biorbyt Ltd.**

7 Signet Court, Swann Road  
Cambridge  
CB5 8LA  
United Kingdom

Email: [info@biorbyt.com](mailto:info@biorbyt.com), [support@biorbyt.com](mailto:support@biorbyt.com)

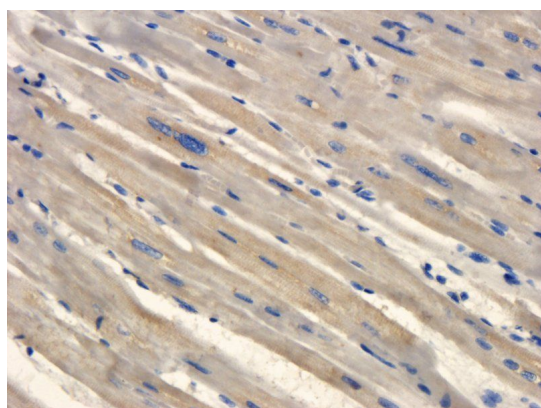
Phone: +44 (0)1223 859353 | Fax: +1 (415) 651-8558

**Biorbyt LLC**

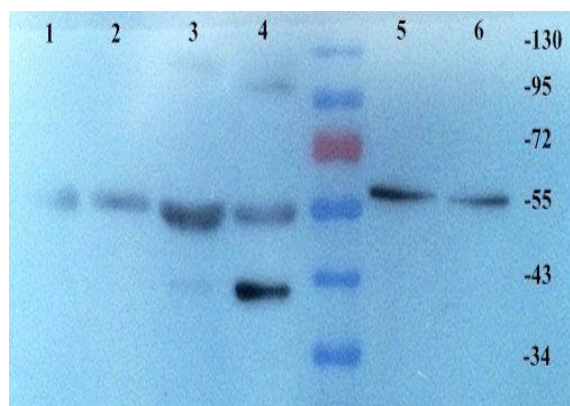
68 TW Alexander Drive  
Research Triangle Park  
Durham  
NC 27713-2847  
United States

Email: [info@biorbyt.com](mailto:info@biorbyt.com), [support@biorbyt.com](mailto:support@biorbyt.com)

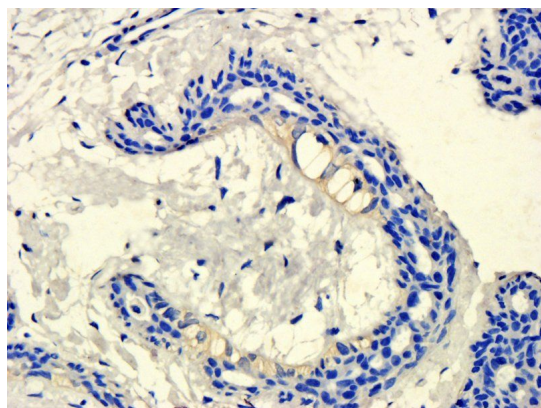
Phone: +1 (415) 906-5211 | Fax: +1 (415) 651-8558



Immunohistochemical staining of pig heart tissue using anti-KLKB1 (dilution of primary antibody - 1:100)



Western blot analysis of human breast cancer (Lane 1), (Lane 2), (Lane 3), (Lane 4), rat ovary (Lane 5), rat kidney (Lane 6) using KLKB1 antibody (dilution of primary antibody at 1:500)



IHC-P staining of human breast cancer tissue using anti-KLKB1 (dilution at 1:100)

**Biorbyt Ltd.**

7 Signet Court, Swann Road  
Cambridge  
CB5 8LA  
United Kingdom

Email: [info@biorbyt.com](mailto:info@biorbyt.com), [support@biorbyt.com](mailto:support@biorbyt.com)

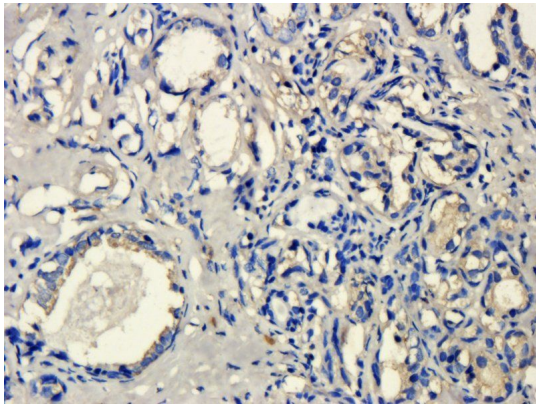
Phone: +44 (0)1223 859353 | Fax: +1 (415) 651-8558

**Biorbyt LLC**

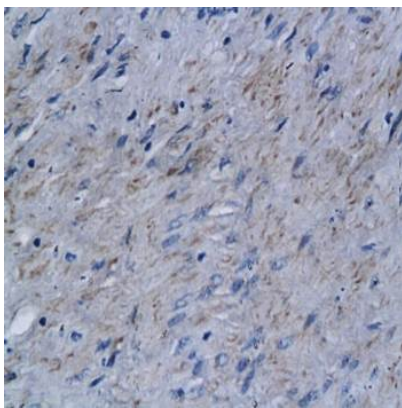
68 TW Alexander Drive  
Research Triangle Park  
Durham  
NC 27713-2847  
United States

Email: [info@biorbyt.com](mailto:info@biorbyt.com), [support@biorbyt.com](mailto:support@biorbyt.com)

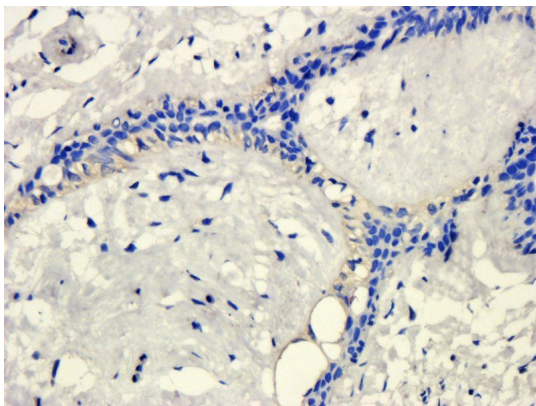
Phone: +1 (415) 906-5211 | Fax: +1 (415) 651-8558



IHC-P staining of human breast cancer tissue using anti-KLKB1 (dilution at 1:100)



Immunohistochemical analysis of formalin-fixed and paraffin embedded human prostate carcinoma tissue (Dilution at:1:200) using KLK3 antibody



IHC-P image of human breast cancer tissue using anti-KLKB1 (dilution of primary antibody at 1:100)

**Biorbyt Ltd.**

7 Signet Court, Swann Road  
Cambridge  
CB5 8LA  
United Kingdom

Email: [info@biorbyt.com](mailto:info@biorbyt.com), [support@biorbyt.com](mailto:support@biorbyt.com)

Phone: [+44 \(0\)1223 859353](tel:+44(0)1223859353) | Fax: [+1 \(415\) 651-8558](tel:+1(415)651-8558)

**Biorbyt LLC**

68 TW Alexander Drive  
Research Triangle Park  
Durham  
NC 27713-2847  
United States

Email: [info@biorbyt.com](mailto:info@biorbyt.com), [support@biorbyt.com](mailto:support@biorbyt.com)

Phone: [+1 \(415\) 906-5211](tel:+1(415)906-5211) | Fax: [+1 \(415\) 651-8558](tel:+1(415)651-8558)