

Product Datasheet

CXCL5 Rabbit Polyclonal Antibody (orb13450)

Catalog Number	orb13450
Category	Antibodies
Description	CXCL5 Rabbit Polyclonal Antibody is an unconjugated antibody that specifically recognizes CXCL5. Generated against a KLH conjugated synthetic peptide derived from human CXCL5. The peptide is available as orb12909. The suitable applications for this antibody are ICC, IF, IHC-P and WB.
Target	CXCL5
Clonality	Polyclonal
Species/Host	Rabbit
Isotype	IgG
Conjugation	Unconjugated
Form/Appearance	10 mM PBS, 0.02% sodium azide
Concentration	- 100 µg (in 200 µl): 0.5 mg/ml- 200 µg (in 400 µl): 0.5 mg/ml
Purity	Polyclonal antibodies are purified by peptide affinity chromatography
Immunogen	KLH conjugated synthetic peptide derived from human CXCL5. Please contact us for the exact immunogen sequence. The peptide is available as orb12909.
RRID	AB_10747251
MW	12 kDa
Tested applications	ICC, IF, IHC-P, WB
Dilution range	IF/ICC: 1:100-800, IHC-P: 1:100-800, WB: 1:200-1000

Biorbyt Ltd.

7 Signet Court, Swann Road
Cambridge
CB5 8LA
United Kingdom

Email: info@biorbyt.com, support@biorbyt.com

Phone: [+44 \(0\)1223 859353](tel:+44(0)1223859353) | Fax: [+1 \(415\) 651-8558](tel:+1(415)651-8558)

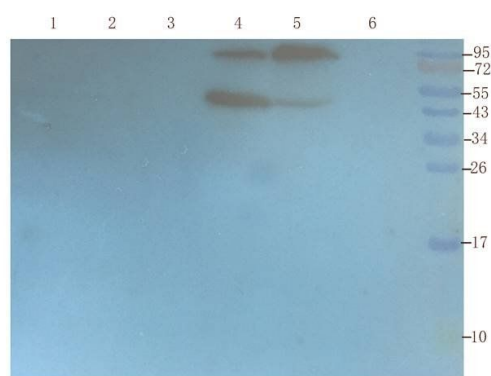
Biorbyt LLC

68 TW Alexander Drive
Research Triangle Park
Durham
NC 27713
United States

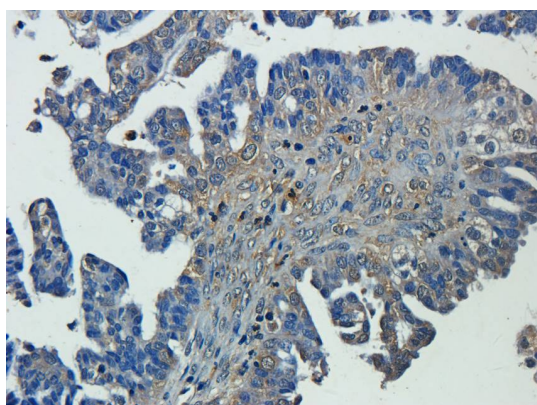
Email: info@biorbyt.com, support@biorbyt.com

Phone: [+1 \(415\) 906-5211](tel:+1(415)906-5211) | Fax: [+1 \(415\) 651-8558](tel:+1(415)651-8558)

Storage	Maintain refrigerated at 2-8°C for up to 2 weeks. For long term storage store at -20°C in small aliquots to prevent freeze-thaw cycles.
Note	For research use only
Entrez	20311
NCBI	41, 11, 002985, 002994
Expiration Date	12 months from date of receipt.



WB analysis of mouse stomach (lane 1), rat rectum (lane 2), rat ovary (lane 3), human lung cancer (lane 4), human breast cancer (lane 5), Hela (lane 6) using CXCL5 antibody (1 ug/ml)



Immunohistochemical staining of paraffin embedded human ovarian cancer tissue using CXCL5 antibody (primary antibody at 2.5 ug/ml)

Biorbyt Ltd.

7 Signet Court, Swann Road
Cambridge
CB5 8LA
United Kingdom

Email: info@biorbyt.com, support@biorbyt.com

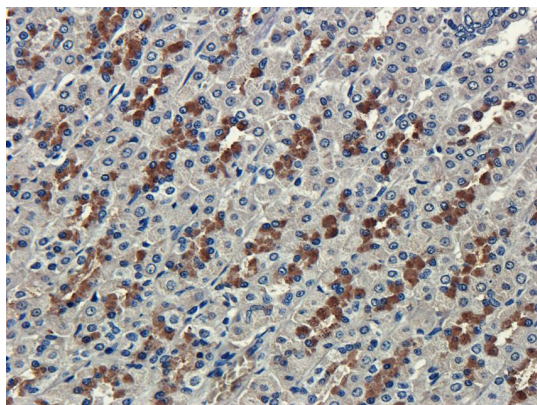
Phone: [+44 \(0\)1223 859353](tel:+44(0)1223859353) | Fax: [+1 \(415\) 651-8558](tel:+1(415)651-8558)

Biorbyt LLC

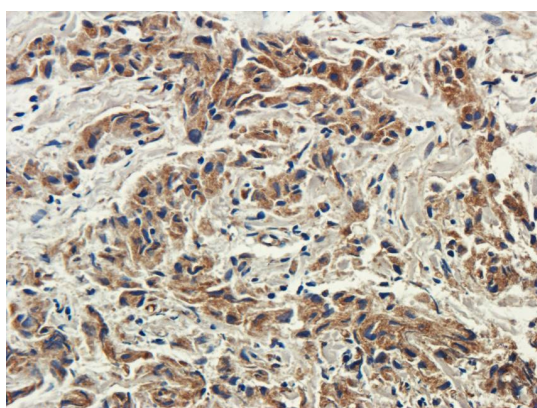
68 TW Alexander Drive
Research Triangle Park
Durham
NC 27713
United States

Email: info@biorbyt.com, support@biorbyt.com

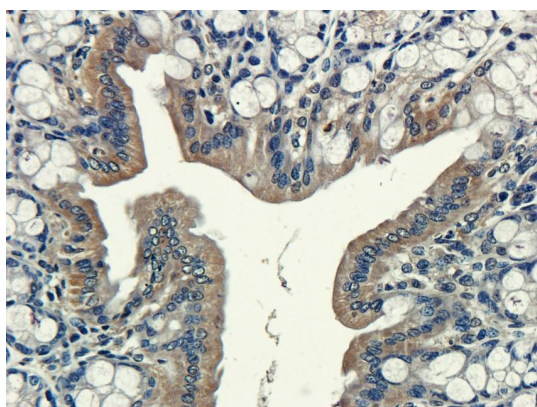
Phone: [+1 \(415\) 906-5211](tel:+1(415)906-5211) | Fax: [+1 \(415\) 651-8558](tel:+1(415)651-8558)



Immunohistochemical staining of paraffin embedded rat stomach tissue using anti-CXCL5 (primary antibody at 2.5 ug/ml)



Immunohistochemical staining of paraffin embedded human breast cancer tissue using anti-CXCL5 (primary antibody at 2.5 ug/ml)



Immunohistochemical staining of guinea pig rectum tissue using anti-CXCL5 (dilution of primary antibody - 2.5 ug/ml)

Biorbyt Ltd.

7 Signet Court, Swann Road
Cambridge
CB5 8LA
United Kingdom

Email: info@biorbyt.com, support@biorbyt.com

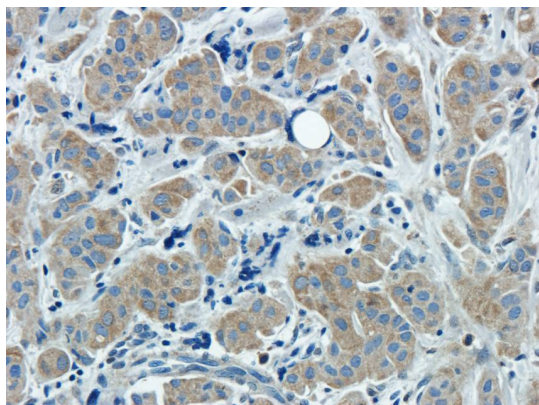
Phone: [+44 \(0\)1223 859353](tel:+44(0)1223859353) | Fax: [+1 \(415\) 651-8558](tel:+1(415)651-8558)

Biorbyt LLC

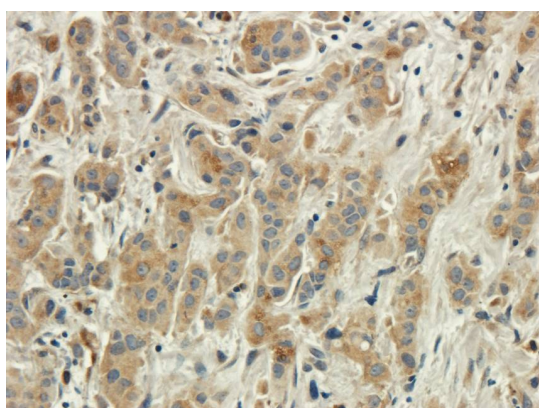
68 TW Alexander Drive
Research Triangle Park
Durham
NC 27713
United States

Email: info@biorbyt.com, support@biorbyt.com

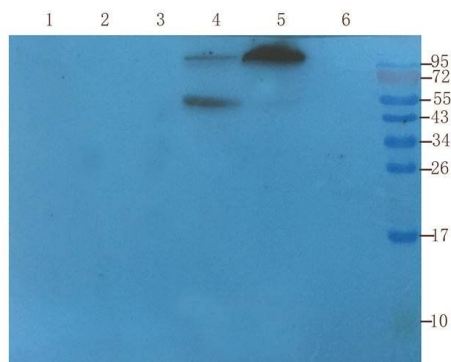
Phone: [+1 \(415\) 906-5211](tel:+1(415)906-5211) | Fax: [+1 \(415\) 651-8558](tel:+1(415)651-8558)



Immunohistochemical staining of paraffin embedded human breast cancer tissue using anti-CXCL5 (primary antibody at 2.5 ug/ml)



Immunohistochemical staining of paraffin embedded human breast cancer tissue using anti-CXCL5 (primary antibody at 2.5 ug/ml)



Western blot analysis of mouse stomach (lane 1), rat rectum (lane 2), rat ovary (lane 3), human lung cancer (lane 4), human breast cancer (lane 5), HeLa (lane 6) using CXCL5 antibody (1 ug/ml)

Biorbyt Ltd.

7 Signet Court, Swann Road
Cambridge
CB5 8LA
United Kingdom

Email: info@biorbyt.com, support@biorbyt.com

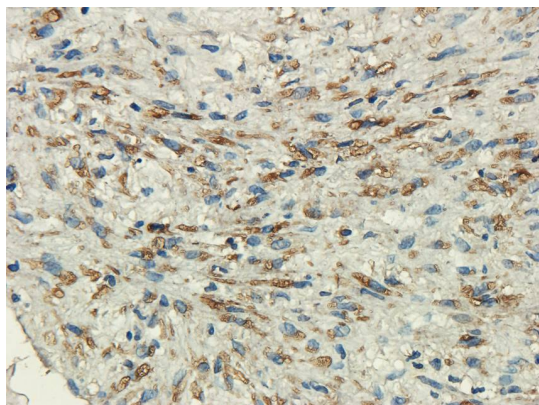
Phone: +44 (0)1223 859353 | Fax: +1 (415) 651-8558

Biorbyt LLC

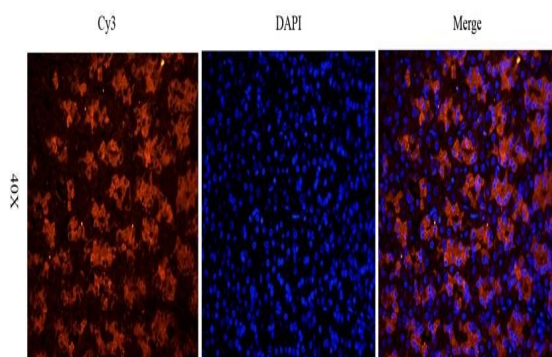
68 TW Alexander Drive
Research Triangle Park
Durham
NC 27713
United States

Email: info@biorbyt.com, support@biorbyt.com

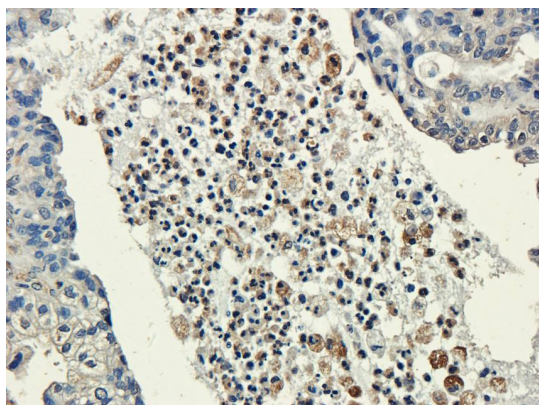
Phone: +1 (415) 906-5211 | Fax: +1 (415) 651-8558



IHC-P staining of human ovarian cancer tissue using anti-CXCL5 (dilution at 2.5 ug/ml)



Immunofluorescence image of rat stomach tissue using CXCL5 antibody (dilution at 2.5 ug/ml)



IHC-P staining of human ovarian cancer tissue using CXCL5 antibody (dilution at 2.5 ug/ml)

Biorbyt Ltd.

7 Signet Court, Swann Road
Cambridge
CB5 8LA
United Kingdom

Email: info@biorbyt.com, support@biorbyt.com

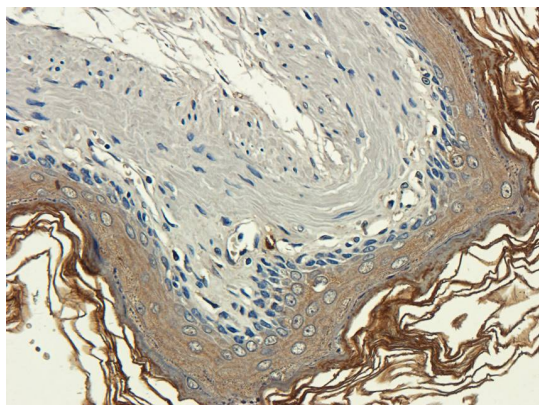
Phone: [+44 \(0\)1223 859353](tel:+44(0)1223859353) | Fax: [+1 \(415\) 651-8558](tel:+1(415)651-8558)

Biorbyt LLC

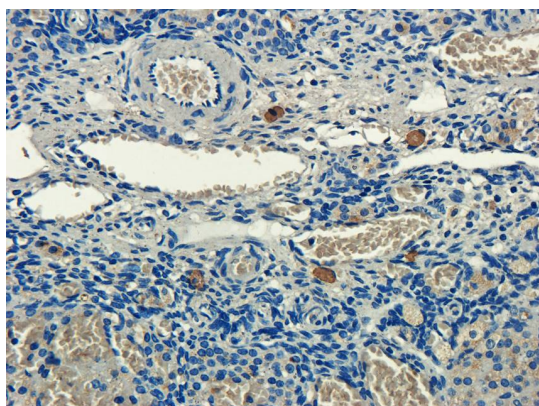
68 TW Alexander Drive
Research Triangle Park
Durham
NC 27713
United States

Email: info@biorbyt.com, support@biorbyt.com

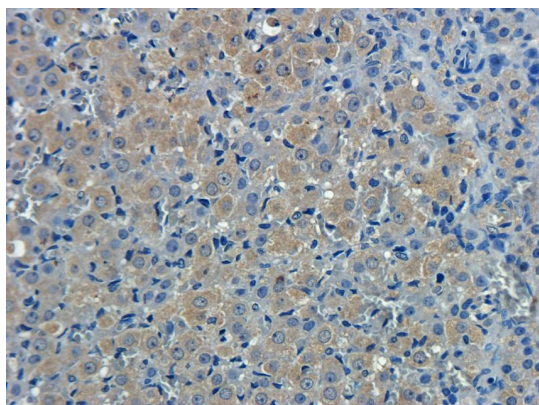
Phone: [+1 \(415\) 906-5211](tel:+1(415)906-5211) | Fax: [+1 \(415\) 651-8558](tel:+1(415)651-8558)



Immunohistochemical staining of paraffin embedded rat stomach tissue using anti-CXCL5 (primary antibody at 2.5 ug/ml)



IHC-P image of rat ovary tissue using anti-CXCL5 (dilution of primary antibody at 2.5 ug/ml)



IHC-P image of rat ovary tissue using CXCL5 antibody (dilution of primary antibody at 2.5 ug/ml)

Biorbyt Ltd.

7 Signet Court, Swann Road
Cambridge
CB5 8LA
United Kingdom

Email: info@biorbyt.com, support@biorbyt.com

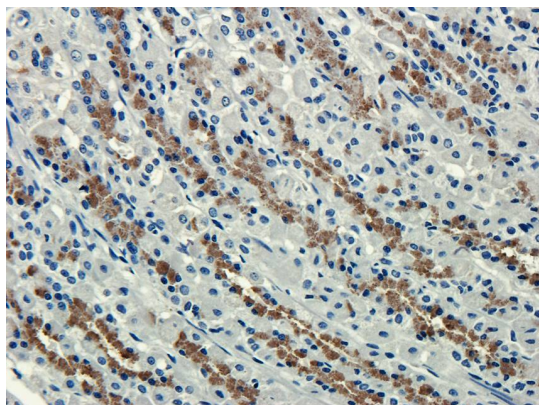
Phone: [+44 \(0\)1223 859353](tel:+44(0)1223859353) | Fax: [+1 \(415\) 651-8558](tel:+1(415)651-8558)

Biorbyt LLC

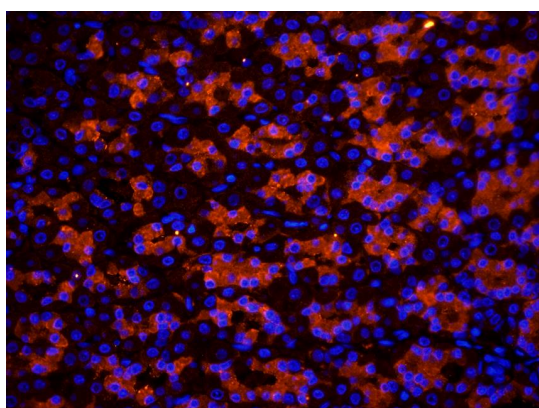
68 TW Alexander Drive
Research Triangle Park
Durham
NC 27713
United States

Email: info@biorbyt.com, support@biorbyt.com

Phone: [+1 \(415\) 906-5211](tel:+1(415)906-5211) | Fax: [+1 \(415\) 651-8558](tel:+1(415)651-8558)



IHC-P image of rat stomach tissue using CXCL5 antibody (dilution of primary antibody at 2.5 ug/ml)



IF image of rat stomach tissue using CXCL5 antibody (primary antibody at 2.5 ug/ml)

Biorbyt Ltd.

7 Signet Court, Swann Road
Cambridge
CB5 8LA
United Kingdom

Email: info@biorbyt.com, support@biorbyt.com

Phone: [+44 \(0\)1223 859353](tel:+44(0)1223859353) | Fax: [+1 \(415\) 651-8558](tel:+1(415)651-8558)

Biorbyt LLC

68 TW Alexander Drive
Research Triangle Park
Durham
NC 27713
United States

Email: info@biorbyt.com, support@biorbyt.com

Phone: [+1 \(415\) 906-5211](tel:+1(415)906-5211) | Fax: [+1 \(415\) 651-8558](tel:+1(415)651-8558)