

## Product Datasheet

# RPLP2 Human Over-expression Lysate (orb1342179)

<b>Catalog Number</b>	orb1342179
<b>Category</b>	Proteins
<b>Description</b>	Transient overexpression lysate of ribosomal protein, large, P2 (RPLP2)
<b>Target</b>	RPLP2
<b>Tag</b>	C-Myc/DDK
<b>UniProt ID</b>	<b>P05387</b>
<b>MW</b>	11.5 kDa
<b>Expression System</b>	HEK293T
<b>Source</b>	Human
<b>Storage</b>	Ship with dry ice. Upon receiving, store the sample at -80°C. Avoid repeated freeze-thaw cycles. Lysate samples can be diluted with 2xSDS Sample Buffer provided. Lysate samples are stable for 12 months from the date of receipt when stored at -80°C.
<b>Dry Ice Shipping</b>	<b>Please note: This product requires shipment on dry ice. A dry ice surcharge will apply.</b>
<b>Note</b>	For research use only
<b>NCBI</b>	<b>NM_001004, NP_000995</b>
<b>Expiration Date</b>	6 months from date of receipt.

### Biorbyt Ltd.

7 Signet Court, Swann Road  
Cambridge  
CB5 8LA  
United Kingdom

Email: [info@biorbyt.com](mailto:info@biorbyt.com), [support@biorbyt.com](mailto:support@biorbyt.com)

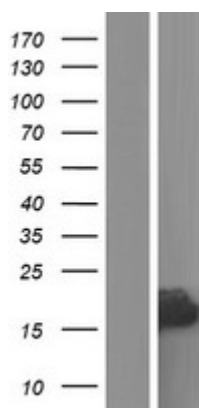
Phone: [+44 \(0\)1223 859353](tel:+44(0)1223859353) | Fax: [+1 \(415\) 651-8558](tel:+1(415)651-8558)

### Biorbyt LLC

68 TW Alexander Drive  
Research Triangle Park  
Durham  
NC 27713-2847  
United States

Email: [info@biorbyt.com](mailto:info@biorbyt.com), [support@biorbyt.com](mailto:support@biorbyt.com)

Phone: [+1 \(415\) 906-5211](tel:+1(415)906-5211) | Fax: [+1 \(415\) 651-8558](tel:+1(415)651-8558)



Western blot analysis of Left: Cell lysates from un-transfected HEK293T cells; Right: Cell lysates from HEK293T cells transfected with transfection reagent MegaTran 2.0) using RPLP2 Human Over-expression Lysate

**Biorbyt Ltd.**

7 Signet Court, Swann Road  
Cambridge  
CB5 8LA  
United Kingdom

Email: [info@biorbyt.com](mailto:info@biorbyt.com), [support@biorbyt.com](mailto:support@biorbyt.com)

Phone: [+44 \(0\)1223 859353](tel:+44(0)1223859353) | Fax: [+1 \(415\) 651-8558](tel:+1(415)651-8558)

**Biorbyt LLC**

68 TW Alexander Drive  
Research Triangle Park  
Durham  
NC 27713-2847  
United States

Email: [info@biorbyt.com](mailto:info@biorbyt.com), [support@biorbyt.com](mailto:support@biorbyt.com)

Phone: [+1 \(415\) 906-5211](tel:+1(415)906-5211) | Fax: [+1 \(415\) 651-8558](tel:+1(415)651-8558)