

Product Datasheet

Pyruvate Kinase Antibody (orb1337567)

Catalog Number	orb1337567
Category	Antibodies
Description	Mouse monoclonal antibody to Pyruvate Kinase (PKLR)
Target	Pyruvate Kinase
Clonality	Monoclonal
Species/Host	Mouse
Isotype	IgG2a
Conjugation	Unconjugated
Reactivity	Human, Mouse, Rat
Immunogen	Full length human recombinant protein of human PKLR (NP_000289) produced in HEK293T cell.
UniProt ID	P30613
MW	61.6 kDa
Tested applications	FC, IF, WB
Dilution range	WB 1:2000, IF 1:100, FLOW 1:100
Application notes	For reconstitution, we recommend adding 100uL distilled water to a final antibody concentration of about 1 mg/mL. To use this carrier-free antibody for conjugation experiment, we strongly recommend performing another round of desalting process.
Antibody Type	Primary Antibody

Biorbyt Ltd.

7 Signet Court, Swann Road
Cambridge
CB5 8LA
United Kingdom

Email: info@biorbyt.com, support@biorbyt.com

Phone: [+44 \(0\)1223 859353](tel:+44(0)1223859353) | Fax: [+1 \(415\) 651-8558](tel:+1(415)651-8558)

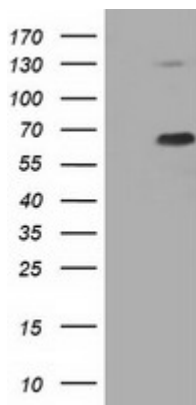
Biorbyt LLC

68 TW Alexander Drive
Research Triangle Park
Durham
NC 27713
United States

Email: info@biorbyt.com, support@biorbyt.com

Phone: [+1 \(415\) 906-5211](tel:+1(415)906-5211) | Fax: [+1 \(415\) 651-8558](tel:+1(415)651-8558)

Clone Number	OT11H2
Storage	Maintain refrigerated at 2-8°C for up to 2 weeks. For long term storage store at -20°C in small aliquots to prevent freeze-thaw cycles.
Note	For research use only
NCBI	NM_000298
Expiration Date	12 months from date of receipt.



Western blot analysis of HEK293T cells were transfected with the pCMV6-ENTRY control (Left lane) or pCMV6-ENTRY PKLR (Right lane) cDNA for 48 hrs and lysed using Pyruvate Kinase (PKLR) antibody

Biorbyt Ltd.

7 Signet Court, Swann Road
Cambridge
CB5 8LA
United Kingdom

Email: info@biorbyt.com, support@biorbyt.com

Phone: [+44 \(0\)1223 859353](tel:+44(0)1223859353) | Fax: [+1 \(415\) 651-8558](tel:+1(415)651-8558)

Biorbyt LLC

68 TW Alexander Drive
Research Triangle Park
Durham
NC 27713
United States

Email: info@biorbyt.com, support@biorbyt.com

Phone: [+1 \(415\) 906-5211](tel:+1(415)906-5211) | Fax: [+1 \(415\) 651-8558](tel:+1(415)651-8558)