

Product Datasheet

NKp46 Rabbit Polyclonal Antibody (orb13333)

Catalog Number	orb13333
Category	Antibodies
Description	NKp46 Rabbit Polyclonal Antibody
Target	NKp46
Clonality	Polyclonal
Species/Host	Rabbit
Isotype	IgG
Conjugation	Unconjugated
Reactivity	Human, Mouse, Rat
Form/Appearance	10 mM PBS, 0.02% sodium azide
Concentration	- 100 µg (in 200 µl): 0.5 mg/ml- 200 µg (in 400 µl): 0.5 mg/ml
Purity	Polyclonal antibodies are purified by peptide affinity chromatography
Immunogen	KLH conjugated synthetic peptide derived from human NKp46. Please contact us for the exact immunogen sequence. The peptide is available as orb374761.
UniProt ID	Q8C567, O76036, Q9Z0H5
RRID	AB_10767953
MW	34 kDa
Tested applications	ICC, IF, IHC-P, WB

Biorbyt Ltd.

7 Signet Court, Swann Road
Cambridge
CB5 8LA
United Kingdom

Email: info@biorbyt.com, support@biorbyt.com

Phone: [+44 \(0\)1223 859353](tel:+44(0)1223859353) | Fax: [+1 \(415\) 651-8558](tel:+1(415)651-8558)

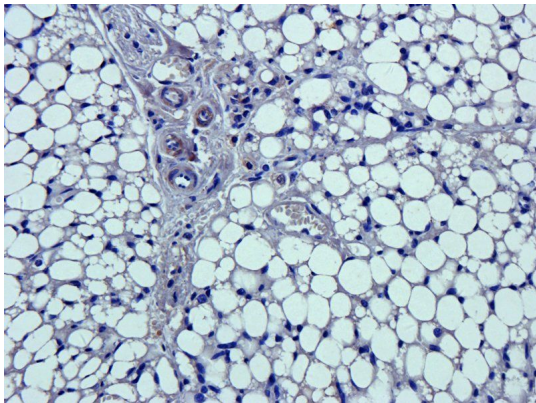
Biorbyt LLC

68 TW Alexander Drive
Research Triangle Park
Durham
NC 27713
United States

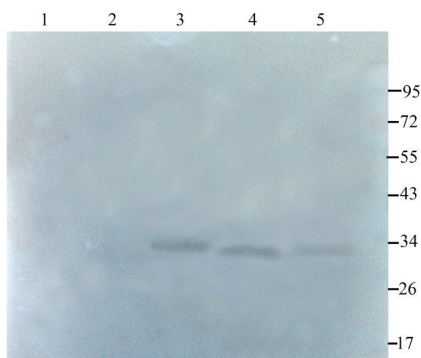
Email: info@biorbyt.com, support@biorbyt.com

Phone: [+1 \(415\) 906-5211](tel:+1(415)906-5211) | Fax: [+1 \(415\) 651-8558](tel:+1(415)651-8558)

Dilution range	WB: 1:100-500, IHC-P: 1:50-500, IF/ICC: 1:50-500
Storage	Maintain refrigerated at 2-8°C for up to 2 weeks. For long term storage store at -20°C in small aliquots to prevent freeze-thaw cycles.
Note	For research use only
Entrez	9437
NCBI	001145457, 21, 001138929
Expiration Date	12 months from date of receipt.



Immunohistochemical staining of mouse lymph node tissue using NKp46 antibody (dilution of primary antibody - 2.5 ug/ml)



Western blot analysis of rat lymph node (lane 1), rat thyroid (lane 2), rat thymus (lane 3), rat kidney (lane 4), mouse spleen (lane 5) using NKp46 antibody (1 ug/ml)

Biorbyt Ltd.

7 Signet Court, Swann Road
Cambridge
CB5 8LA
United Kingdom

Email: info@biorbyt.com, support@biorbyt.com

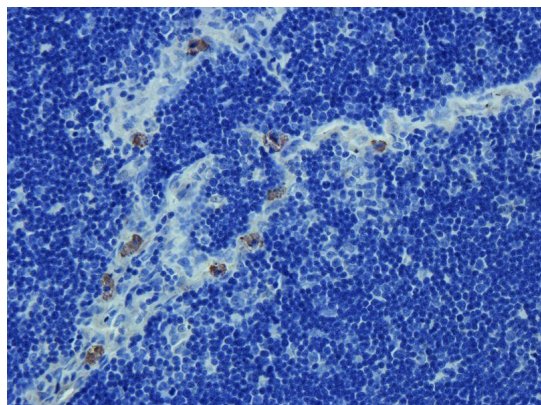
Phone: [+44 \(0\)1223 859353](tel:+44(0)1223859353) | Fax: [+1 \(415\) 651-8558](tel:+1(415)651-8558)

Biorbyt LLC

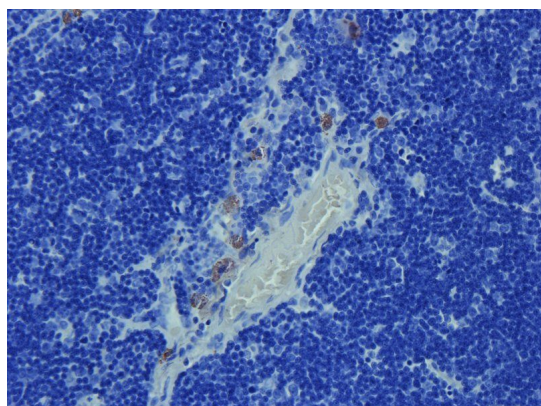
68 TW Alexander Drive
Research Triangle Park
Durham
NC 27713
United States

Email: info@biorbyt.com, support@biorbyt.com

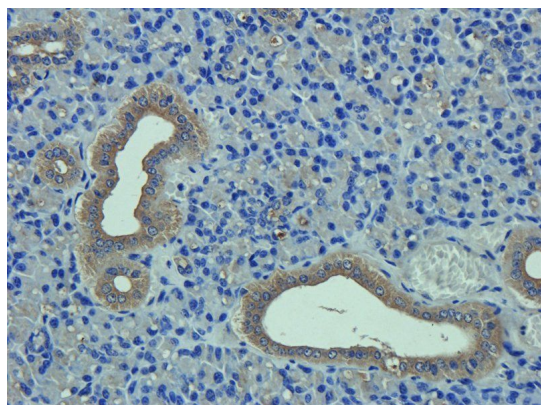
Phone: [+1 \(415\) 906-5211](tel:+1(415)906-5211) | Fax: [+1 \(415\) 651-8558](tel:+1(415)651-8558)



IHC-P image of rat thymus tissue using anti-NKp46 (dilution of primary antibody at 2.5 ug/ml)



IHC-P staining of rat thymus tissue using anti-NKp46 (dilution at 2.5 ug/ml)



IHC-P image of mouse lymph node tissue using anti-NKp46 (dilution of primary antibody at 2.5 ug/ml)

Biorbyt Ltd.

7 Signet Court, Swann Road
Cambridge
CB5 8LA
United Kingdom

Email: info@biorbyt.com, support@biorbyt.com

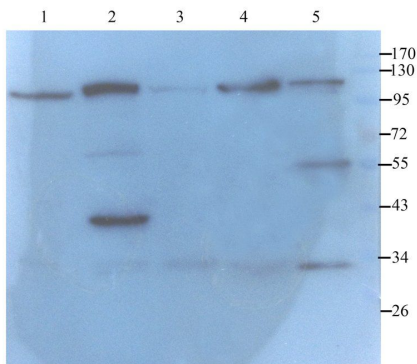
Phone: [+44 \(0\)1223 859353](tel:+44(0)1223859353) | Fax: [+1 \(415\) 651-8558](tel:+1(415)651-8558)

Biorbyt LLC

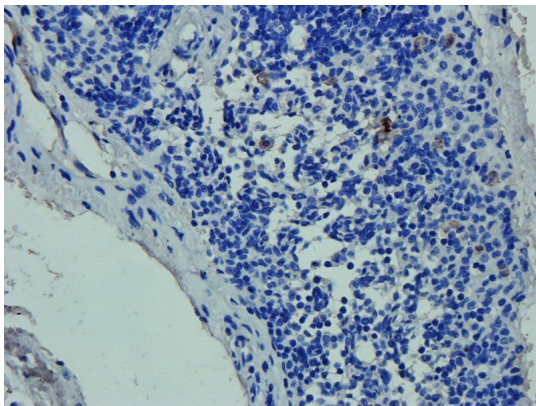
68 TW Alexander Drive
Research Triangle Park
Durham
NC 27713
United States

Email: info@biorbyt.com, support@biorbyt.com

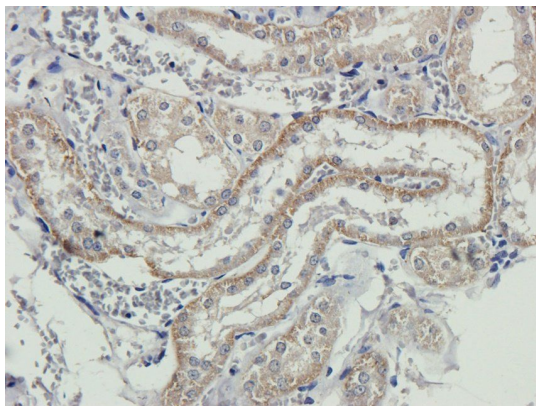
Phone: [+1 \(415\) 906-5211](tel:+1(415)906-5211) | Fax: [+1 \(415\) 651-8558](tel:+1(415)651-8558)



WB analysis of rat lymph node (lane 1), rat thyroid (lane 2), rat thymus (lane 3), rat kidney (lane 4), mouse spleen (lane 5) using NKp46 antibody (1 ug/ml)



Immunohistochemical staining of rat lymph node tissue using anti-NKp46 (dilution of primary antibody - 2.5 ug/ml)



Immunohistochemical staining of rat kidney tissue using anti-NKp46 (2.5 ug/ml)

Biorbyt Ltd.

7 Signet Court, Swann Road
Cambridge
CB5 8LA
United Kingdom

Email: info@biorbyt.com, support@biorbyt.com

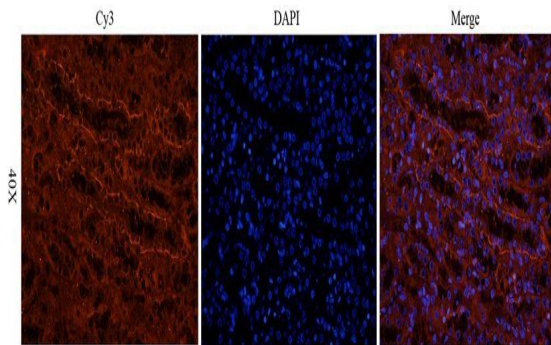
Phone: +44 (0)1223 859353 | Fax: +1 (415) 651-8558

Biorbyt LLC

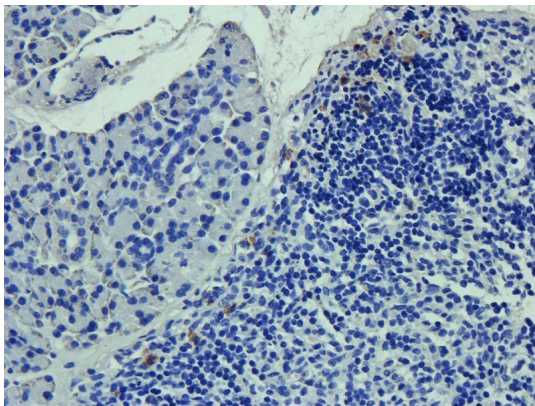
68 TW Alexander Drive
Research Triangle Park
Durham
NC 27713
United States

Email: info@biorbyt.com, support@biorbyt.com

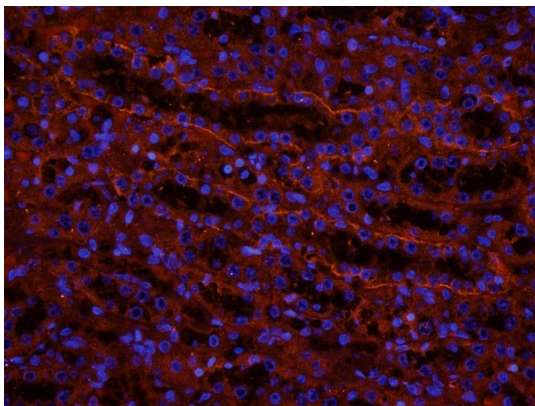
Phone: +1 (415) 906-5211 | Fax: +1 (415) 651-8558



IF image of rat kidney tissue using anti-NKp46 (2.5 ug/ml)



Immunohistochemical staining of paraffin embedded mouse lymph node tissue using anti-NKp46 (primary antibody at 2.5 ug/ml)



Immunofluorescence analysis of rat kidney tissue using NKp46 antibody (2.5 ug/ml)

Biorbyt Ltd.

7 Signet Court, Swann Road
Cambridge
CB5 8LA
United Kingdom

Email: info@biorbyt.com, support@biorbyt.com

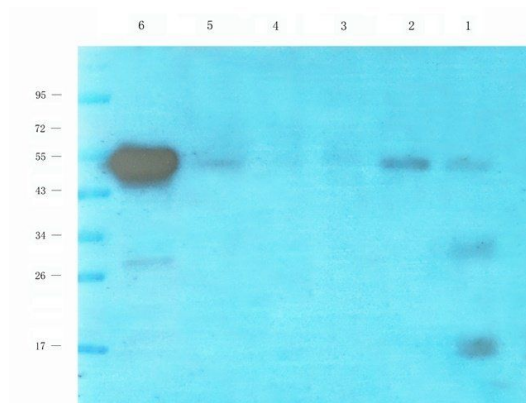
Phone: [+44 \(0\)1223 859353](tel:+44(0)1223859353) | Fax: [+1 \(415\) 651-8558](tel:+1(415)651-8558)

Biorbyt LLC

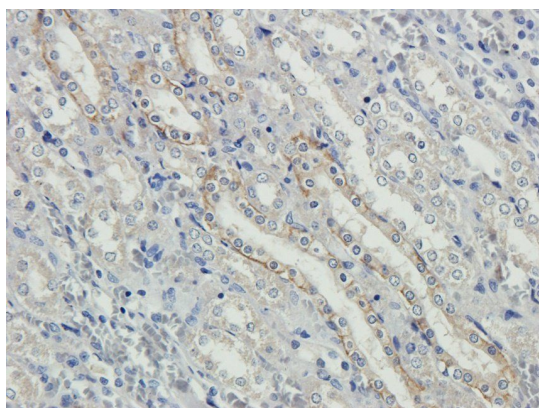
68 TW Alexander Drive
Research Triangle Park
Durham
NC 27713
United States

Email: info@biorbyt.com, support@biorbyt.com

Phone: [+1 \(415\) 906-5211](tel:+1(415)906-5211) | Fax: [+1 \(415\) 651-8558](tel:+1(415)651-8558)



WB analysis of mouse spleen (lane 1), mouse kidney (lane 2), rat lymph node (lane 3), rat bone marrow (lane 4), rat thymus (lane 5), human breast cancer (lane 6) using anti-NKp46 (1 ug/ml)



Immunohistochemical staining of paraffin embedded rat kidney tissue using NKp46 antibody (2.5 ug/ml)

Biorbyt Ltd.

7 Signet Court, Swann Road
Cambridge
CB5 8LA
United Kingdom

Email: info@biorbyt.com, support@biorbyt.com

Phone: [+44 \(0\)1223 859353](tel:+44(0)1223859353) | Fax: [+1 \(415\) 651-8558](tel:+1(415)651-8558)

Biorbyt LLC

68 TW Alexander Drive
Research Triangle Park
Durham
NC 27713
United States

Email: info@biorbyt.com, support@biorbyt.com

Phone: [+1 \(415\) 906-5211](tel:+1(415)906-5211) | Fax: [+1 \(415\) 651-8558](tel:+1(415)651-8558)