

Product Datasheet

CD163 antibody (orb13303)

Catalog Number	orb13303
Category	Antibodies
Description	CD163 antibody
Target	CD163
Clonality	Polyclonal
Species/Host	Rabbit
Isotype	IgG
Conjugation	Unconjugated
Form/Appearance	10 mM PBS, 0.02% sodium azide
Concentration	- 100 µg (in 200 µl): 0.5 mg/ml- 200 µg (in 400 µl): 0.5 mg/ml
Purity	Polyclonal antibodies are purified by peptide affinity chromatography
Immunogen	KLH conjugated synthetic peptide derived from human CD163. Please contact us for the exact immunogen sequence. The peptide is available as orb374759.
UniProt ID	Q2VLH6, Q86VB7, D3Z9U2
RRID	AB_10749283
MW	125 kDa
Tested applications	ICC, IF, IHC-P, WB
Dilution range	IHC-P: 1: 100-600, WB: 1:500, ICC: 1:100

Biorbyt Ltd.

7 Signet Court, Swann Road
Cambridge
CB5 8LA
United Kingdom

Email: info@biorbyt.com, support@biorbyt.com

Phone: [+44 \(0\)1223 859353](tel:+44(0)1223859353) | Fax: [+1 \(415\) 651-8558](tel:+1(415)651-8558)

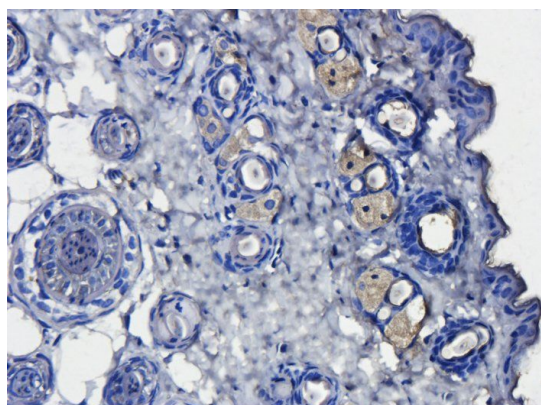
Biorbyt LLC

68 TW Alexander Drive
Research Triangle Park
Durham
NC 27713
United States

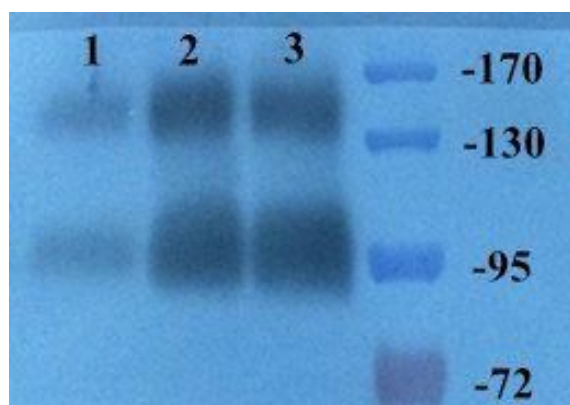
Email: info@biorbyt.com, support@biorbyt.com

Phone: [+1 \(415\) 906-5211](tel:+1(415)906-5211) | Fax: [+1 \(415\) 651-8558](tel:+1(415)651-8558)

Storage	Maintain refrigerated at 2-8°C for up to 2 weeks. For long term storage store at -20°C in small aliquots to prevent freeze-thaw cycles.
Note	For research use only
Entrez	9332
NCBI	51, 004244, 004235, 41
Expiration Date	12 months from date of receipt.



Immunohistochemical staining of paraffin embedded mouse skin tissue using CD163 antibody (primary antibody at 1:200)



WB analysis of human breast cancer (Lane 1), breast cancer (Lane 2), breast cancer (Lane 3) using anti-CD163 (dilution at 1:500)

Biorbyt Ltd.

7 Signet Court, Swann Road
Cambridge
CB5 8LA
United Kingdom

Email: info@biorbyt.com, support@biorbyt.com

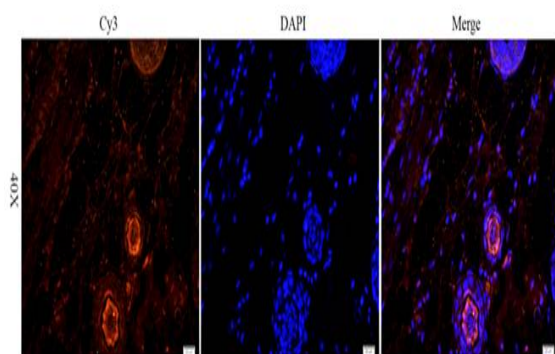
Phone: +44 (0)1223 859353 | Fax: +1 (415) 651-8558

Biorbyt LLC

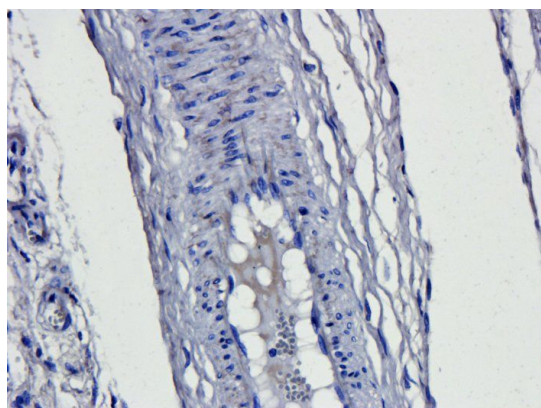
68 TW Alexander Drive
Research Triangle Park
Durham
NC 27713
United States

Email: info@biorbyt.com, support@biorbyt.com

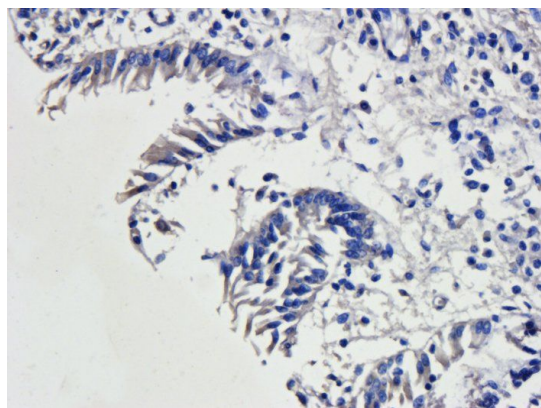
Phone: +1 (415) 906-5211 | Fax: +1 (415) 651-8558



Immunofluorescence image of rat skin tissue using anti-CD163 (dilution at 1:100)



IHC-P staining of pig lung tissue using anti-CD163 (dilution at 1:200)



Immunohistochemical staining of pig large intestines tissue using anti-CD163 (dilution of primary antibody - 1:200)

Biorbyt Ltd.

7 Signet Court, Swann Road
Cambridge
CB5 8LA
United Kingdom

Email: info@biorbyt.com, support@biorbyt.com

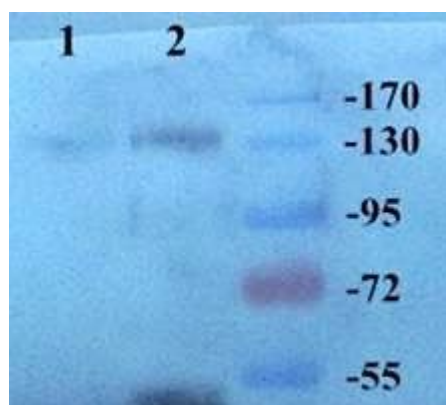
Phone: [+44 \(0\)1223 859353](tel:+44(0)1223859353) | Fax: [+1 \(415\) 651-8558](tel:+1(415)651-8558)

Biorbyt LLC

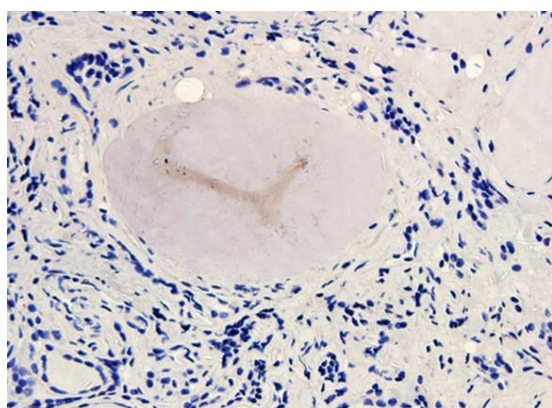
68 TW Alexander Drive
Research Triangle Park
Durham
NC 27713
United States

Email: info@biorbyt.com, support@biorbyt.com

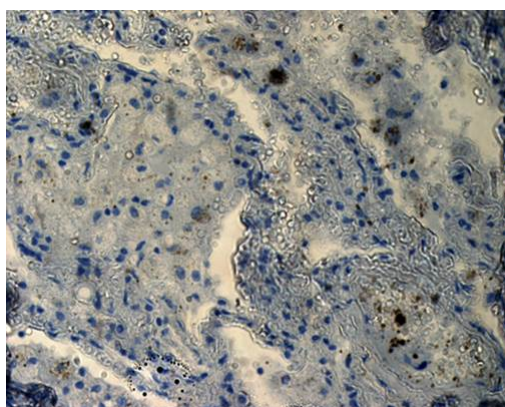
Phone: [+1 \(415\) 906-5211](tel:+1(415)906-5211) | Fax: [+1 \(415\) 651-8558](tel:+1(415)651-8558)



WB analysis of human breast cancer 25 (Lane1), breast cancer 24 (Lane2) using CD163 antibody (dilution at 1:100)



IHC-P image of human thyroid carcinoma tissue using CD163 antibody (dilution of primary antibody at 1:500)



IHC-P of human lung adenocarcinoma tissue using CD163 antibody (Dilution of primary antibody 1:200)

Biorbyt Ltd.

7 Signet Court, Swann Road
Cambridge
CB5 8LA
United Kingdom

Email: info@biorbyt.com, support@biorbyt.com

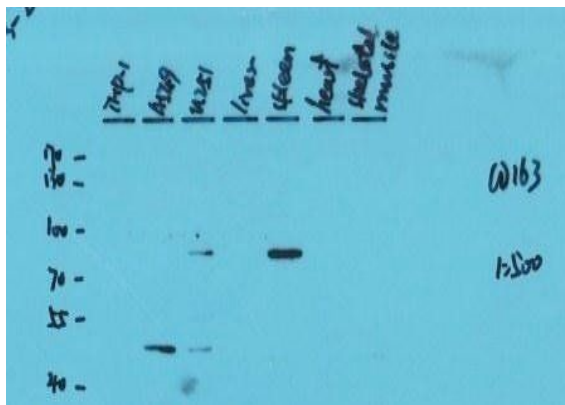
Phone: +44 (0)1223 859353 | Fax: +1 (415) 651-8558

Biorbyt LLC

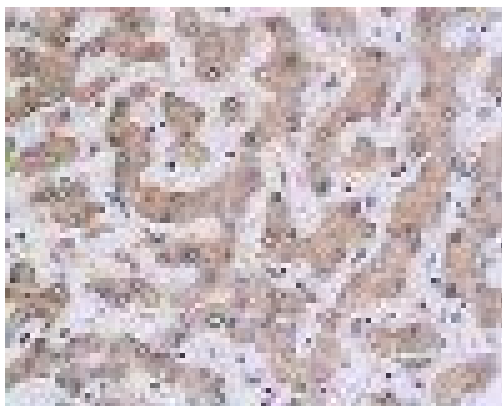
68 TW Alexander Drive
Research Triangle Park
Durham
NC 27713
United States

Email: info@biorbyt.com, support@biorbyt.com

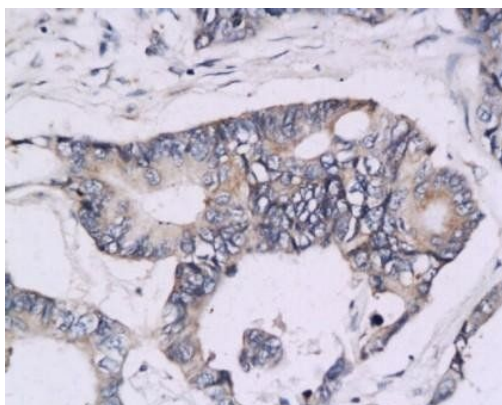
Phone: +1 (415) 906-5211 | Fax: +1 (415) 651-8558



Western blot analysis of human cell lysates using CD163 antibody (please check application notes for details)



Immunohistochemical staining of paraffin embedded human colon cancer tissue (orb13303 at 1:200) using CD163 antibody. (Dilution of primary antibody 1:200)



Immunohistochemical staining of human colon cancer tissue using CD163 antibody. (Dilution of primary antibody 1:200)

Biorbyt Ltd.

7 Signet Court, Swann Road
Cambridge
CB5 8LA
United Kingdom

Email: info@biorbyt.com, support@biorbyt.com

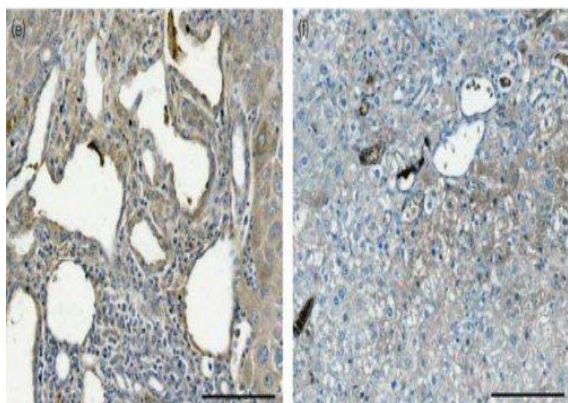
Phone: [+44 \(0\)1223 859353](tel:+44(0)1223859353) | Fax: [+1 \(415\) 651-8558](tel:+1(415)651-8558)

Biorbyt LLC

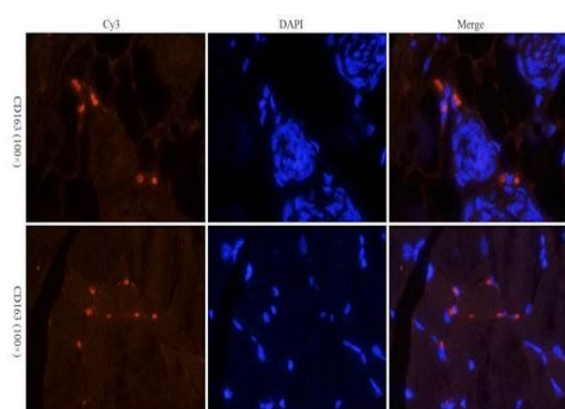
68 TW Alexander Drive
Research Triangle Park
Durham
NC 27713
United States

Email: info@biorbyt.com, support@biorbyt.com

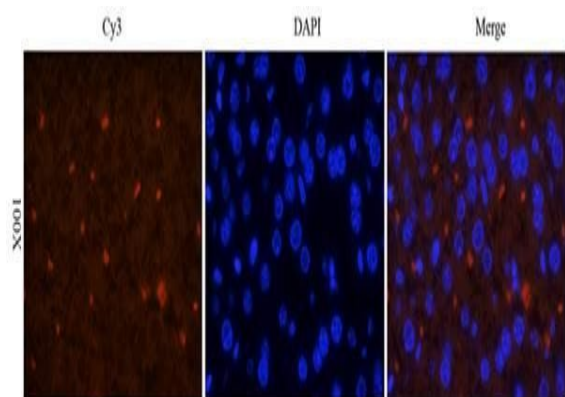
Phone: [+1 \(415\) 906-5211](tel:+1(415)906-5211) | Fax: [+1 \(415\) 651-8558](tel:+1(415)651-8558)



Immunohistochemical staining of paraffin embedded mouse liver tissue using CD163 antibody. (Dilution of primary antibody 1:200)



IF analysis of mouse skin tissue using CD163 antibody (Dilution of primary antibody 1:100)



Immunofluorescent image of mouse liver tissue using CD163 antibody (Primary antibody at 1:100)

Biorbyt Ltd.

7 Signet Court, Swann Road
Cambridge
CB5 8LA
United Kingdom

Email: info@biorbyt.com, support@biorbyt.com

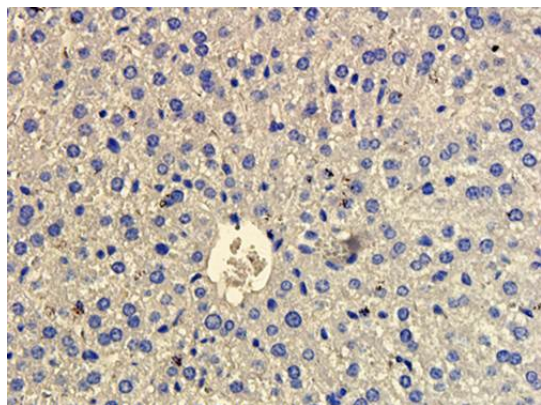
Phone: [+44 \(0\)1223 859353](tel:+44(0)1223859353) | Fax: [+1 \(415\) 651-8558](tel:+1(415)651-8558)

Biorbyt LLC

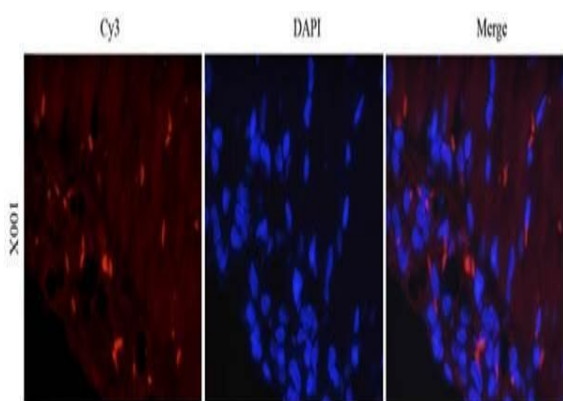
68 TW Alexander Drive
Research Triangle Park
Durham
NC 27713
United States

Email: info@biorbyt.com, support@biorbyt.com

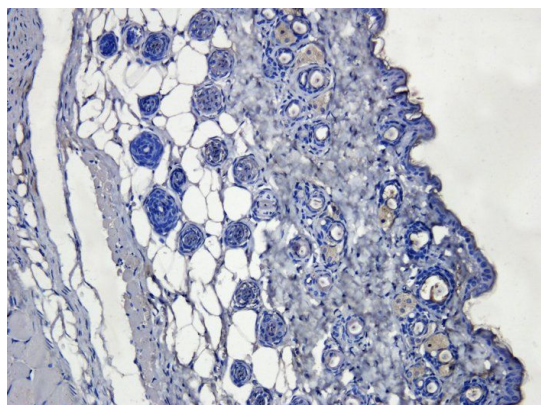
Phone: [+1 \(415\) 906-5211](tel:+1(415)906-5211) | Fax: [+1 \(415\) 651-8558](tel:+1(415)651-8558)



Immunohistochemical staining of mouse liver tissue using anti-CD163 (dilution of primary antibody - 1:200)



Immunofluorescent analysis of mouse lung tissue using CD163 antibody (Primary antibody diluted to 1:100)



Immunohistochemical staining of mouse skin tissue using CD163 antibody (dilution of primary antibody - 1:200)

Biorbyt Ltd.

7 Signet Court, Swann Road
Cambridge
CB5 8LA
United Kingdom

Email: info@biorbyt.com, support@biorbyt.com

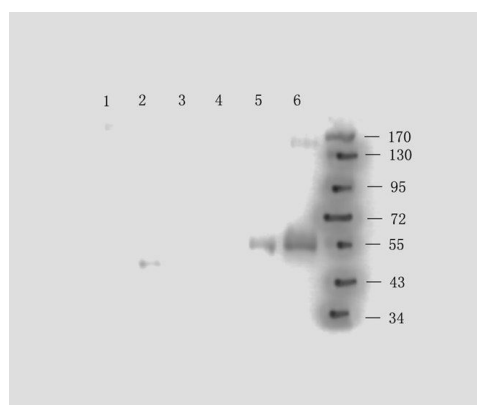
Phone: [+44 \(0\)1223 859353](tel:+44(0)1223859353) | Fax: [+1 \(415\) 651-8558](tel:+1(415)651-8558)

Biorbyt LLC

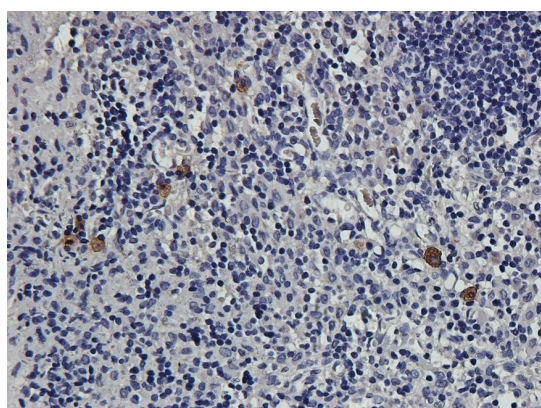
68 TW Alexander Drive
Research Triangle Park
Durham
NC 27713
United States

Email: info@biorbyt.com, support@biorbyt.com

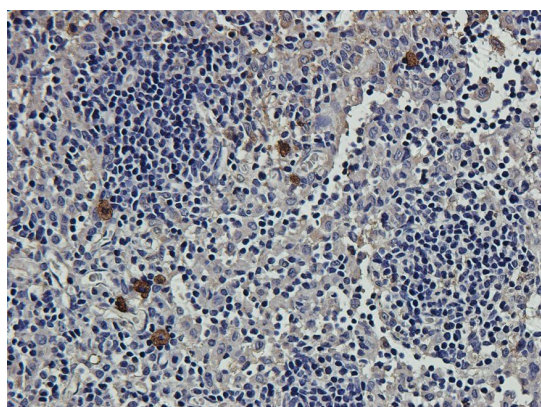
Phone: [+1 \(415\) 906-5211](tel:+1(415)906-5211) | Fax: [+1 \(415\) 651-8558](tel:+1(415)651-8558)



Western blot analysis of guniea pig lymph (lane 1), rat brain (lane 2), mouse stomach (lane3), rat rectum (lane4), human gallbladder (lane 5), human lung cancer (lane 6) tissue using anti-CD163 (0.5 ug/ml)



IHC-P image of rat lymph tissue using anti-CD163 (2.5 ug/ml)



Immunohistochemical staining of rat lymph tissue using CD163 antibody (2.5 ug/ml)

Biorbyt Ltd.

7 Signet Court, Swann Road
Cambridge
CB5 8LA
United Kingdom

Email: info@biorbyt.com, support@biorbyt.com

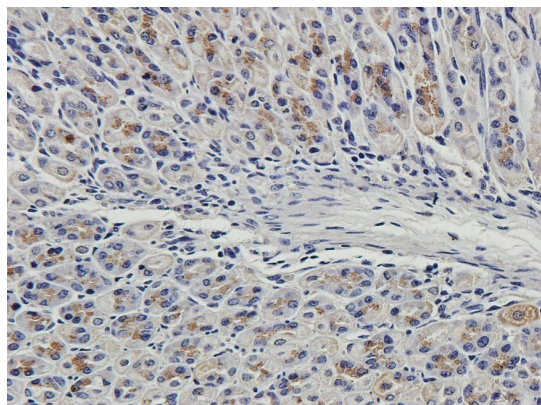
Phone: +44 (0)1223 859353 | Fax: +1 (415) 651-8558

Biorbyt LLC

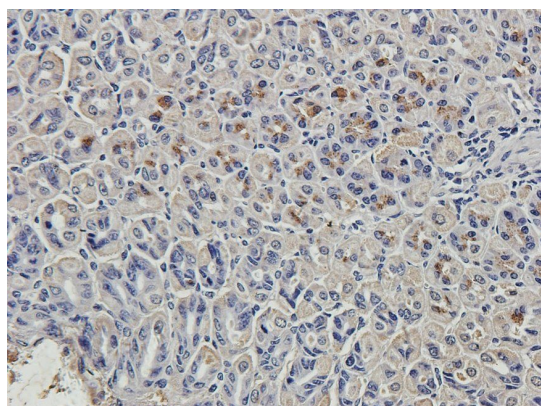
68 TW Alexander Drive
Research Triangle Park
Durham
NC 27713
United States

Email: info@biorbyt.com, support@biorbyt.com

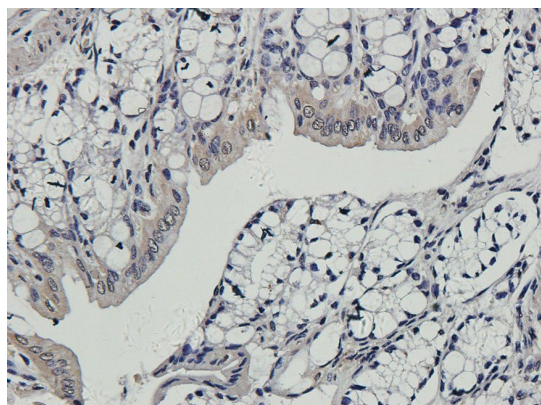
Phone: +1 (415) 906-5211 | Fax: +1 (415) 651-8558



Immunohistochemical staining of mouse stomach tissue using anti-CD163 (2.5 ug/ml)



IHC-P image of mouse stomach tissue using anti-CD163 (2.5 ug/ml)



Immunohistochemical staining of guinea pig colon tissue using anti-CD163 (2.5 ug/ml)

Biorbyt Ltd.

7 Signet Court, Swann Road
Cambridge
CB5 8LA
United Kingdom

Email: info@biorbyt.com, support@biorbyt.com

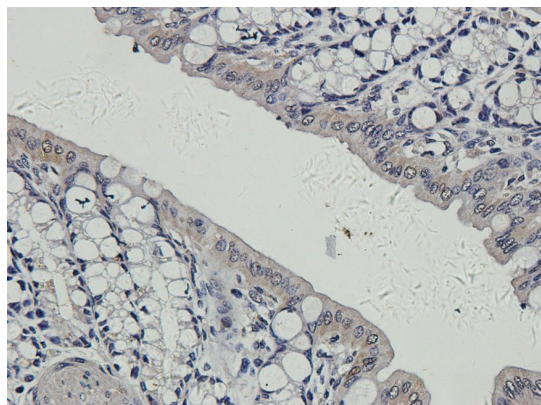
Phone: +44 (0)1223 859353 | Fax: +1 (415) 651-8558

Biorbyt LLC

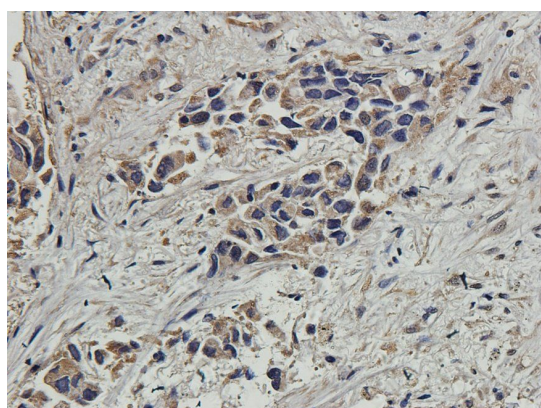
68 TW Alexander Drive
Research Triangle Park
Durham
NC 27713
United States

Email: info@biorbyt.com, support@biorbyt.com

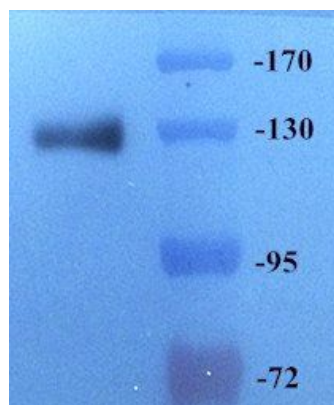
Phone: +1 (415) 906-5211 | Fax: +1 (415) 651-8558



Immunohistochemical staining of guinea pig colon tissue using anti-CD163 (2.5 ug/ml)



Immunohistochemical staining of paraffin embedded human lung cancer tissue using CD163 antibody (2.5 ug/ml)



Western blot analysis of rat lung tissue using anti-CD163 (dilution of primary antibody at 1:500)

Biorbyt Ltd.

7 Signet Court, Swann Road
Cambridge
CB5 8LA
United Kingdom

Email: info@biorbyt.com, support@biorbyt.com

Phone: +44 (0)1223 859353 | Fax: +1 (415) 651-8558

Biorbyt LLC

68 TW Alexander Drive
Research Triangle Park
Durham
NC 27713
United States

Email: info@biorbyt.com, support@biorbyt.com

Phone: +1 (415) 906-5211 | Fax: +1 (415) 651-8558