

Product Datasheet

Beta-tubulin Rabbit Polyclonal Antibody (orb1294417)

| | |
|-----------------------------|---|
| Catalog Number | orb1294417 |
| Category | Antibodies |
| Description | Rabbit polyclonal antibody to Beta Tubulin |
| Target | Beta-tubulin |
| Clonality | Polyclonal |
| Species/Host | Rabbit |
| Isotype | Rabbit-IgG |
| Conjugation | Unconjugated |
| Reactivity | Human, Mouse, Rat |
| Buffer/Preservatives | 100mM Tris Glycine, 20% Glycerol (pH7). 0.025% ProClin 300 was added as a preservative |
| Immunogen | Synthetic peptide / encompassing a sequence within the center region. |
| Tested applications | IF, WB |
| Dilution range | Western Blot 1:5000 - 1:10000, Immunofluorescence 1:200 - 1:500 |
| Antibody Type | Primary Antibody |
| Storage | Maintain refrigerated at 2-8°C for up to 2 weeks. For long term storage store at -20°C in small aliquots to prevent freeze-thaw cycles. |
| Note | For research use only |

Biorbyt Ltd.

7 Signet Court, Swann Road
Cambridge
CB5 8LA
United Kingdom

Email: info@biorbyt.com, support@biorbyt.com

Phone: [+44 \(0\)1223 859353](tel:+44(0)1223859353) | Fax: [+1 \(415\) 651-8558](tel:+1(415)651-8558)

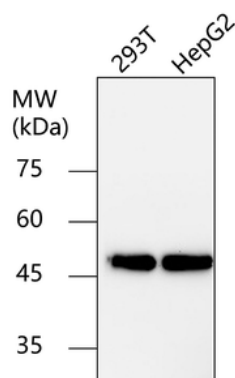
Biorbyt LLC

68 TW Alexander Drive
Research Triangle Park
Durham
NC 27713
United States

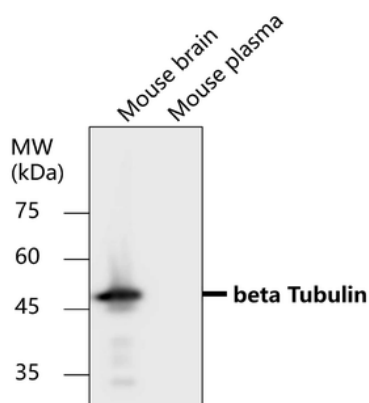
Email: info@biorbyt.com, support@biorbyt.com

Phone: [+1 \(415\) 906-5211](tel:+1(415)906-5211) | Fax: [+1 \(415\) 651-8558](tel:+1(415)651-8558)

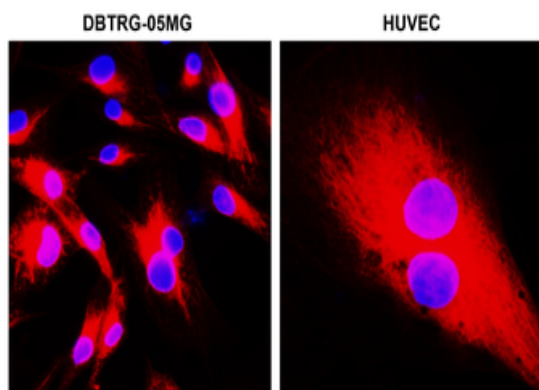
Expiration Date 12 months from date of receipt.



Anti-beta Tubulin antibody - at 1/5000 dilution, Lysates at 30 μ g per lane. This blot was produced using a 10% SDS-PAGE. The Nitrocellulose membrane was then blocked for an hour before being incubated with orb1294417 overnight at 4°C.



Anti-beta Tubulin antibody - at 1/5000 dilution, Lysates at 30 μ g per lane. This blot was produced using a 10% SDS-PAGE. The Nitrocellulose membrane was then blocked for an hour before being incubated with orb1294417 overnight at 4°C.



Immunofluorescence: cells were fixed with 4% paraformaldehyde for 10 min at RT, permeabilized with 0.1% NP-40 for 10 min at RT then blocked with 5% BSA for 30 min at room temperature. Cells were stained with orb1294417 anti-beta Tubulin antibody (red) at 1:600 and 4°C.

Biorbyt Ltd.

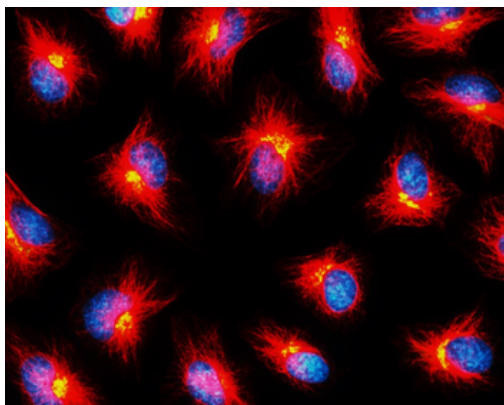
7 Signet Court, Swann Road
Cambridge
CB5 8LA
United Kingdom

Email: info@biorbyt.com, support@biorbyt.com
Phone: +44 (0)1223 859353 | Fax: +1 (415) 651-8558

Biorbyt LLC

68 TW Alexander Drive
Research Triangle Park
Durham
NC 27713
United States

Email: info@biorbyt.com, support@biorbyt.com
Phone: +1 (415) 906-5211 | Fax: +1 (415) 651-8558



Immunofluorescent analysis. Sample: HeLa cells, Red: Beta Tubulin (orb1294417): 1-400, DAPI (blue) was used as the nuclear counter stain. Fixed: ice-cold MeOH for 5 min.

Biorbyt Ltd.

7 Signet Court, Swann Road
Cambridge
CB5 8LA
United Kingdom

Email: info@biorbyt.com, support@biorbyt.com

Phone: [+44 \(0\)1223 859353](tel:+44(0)1223859353) | Fax: [+1 \(415\) 651-8558](tel:+1(415)651-8558)

Biorbyt LLC

68 TW Alexander Drive
Research Triangle Park
Durham
NC 27713
United States

Email: info@biorbyt.com, support@biorbyt.com

Phone: [+1 \(415\) 906-5211](tel:+1(415)906-5211) | Fax: [+1 \(415\) 651-8558](tel:+1(415)651-8558)