

## Product Datasheet

### Lamin B1 Rabbit Polyclonal Antibody (orb1294412)

<b>Catalog Number</b>	orb1294412
<b>Category</b>	Antibodies
<b>Description</b>	Rabbit polyclonal antibody to Lamin B1
<b>Target</b>	Lamin B1
<b>Clonality</b>	Polyclonal
<b>Species/Host</b>	Rabbit
<b>Isotype</b>	Rabbit-IgG
<b>Conjugation</b>	Unconjugated
<b>Reactivity</b>	Human, Mouse, Rat
<b>Buffer/Preservatives</b>	100mM Tris Glycine, 1% rAlbumin, 20% Glycerol (pH7). 0.025% ProClin 300 was added as a preservative
<b>Immunogen</b>	Synthetic peptide / encompassing a sequence within the C-terminus region.
<b>Tested applications</b>	IF, WB
<b>Dilution range</b>	Western Blot 1:1000-1:3000, Immunofluorescence 1:200-1:500
<b>Antibody Type</b>	Primary Antibody
<b>Storage</b>	Maintain refrigerated at 2-8°C for up to 2 weeks. For long term storage store at -20°C in small aliquots to prevent freeze-thaw cycles.
<b>Note</b>	For research use only
<b>Expiration Date</b>	12 months from date of receipt.

**Biorbyt Ltd.**

7 Signet Court, Swann Road  
Cambridge  
CB5 8LA  
United Kingdom

Email: [info@biorbyt.com](mailto:info@biorbyt.com), [support@biorbyt.com](mailto:support@biorbyt.com)

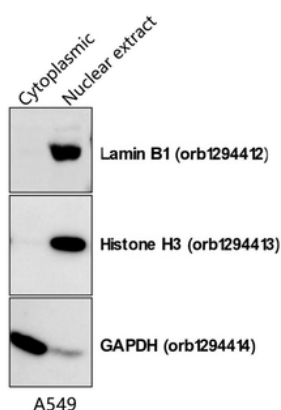
Phone: [+44 \(0\)1223 859353](tel:+44(0)1223859353) | Fax: [+1 \(415\) 651-8558](tel:+1(415)651-8558)

**Biorbyt LLC**

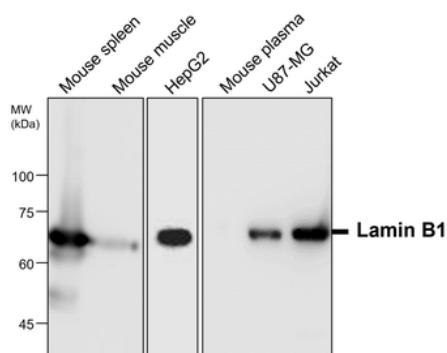
68 TW Alexander Drive  
Research Triangle Park  
Durham  
NC 27713  
United States

Email: [info@biorbyt.com](mailto:info@biorbyt.com), [support@biorbyt.com](mailto:support@biorbyt.com)

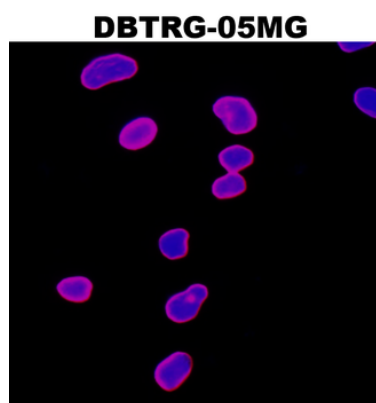
Phone: [+1 \(415\) 906-5211](tel:+1(415)906-5211) | Fax: [+1 \(415\) 651-8558](tel:+1(415)651-8558)



A549 cells'cytoplasmic and nuclear proteins extracted by 30-min. A. SDS-PAGE gel shows the profiles of extracted cytoplasmic proteins and nuclear proteins. B. The proteins from the gel were transferred to nitrocellulose membrane and probed with Lamin B1 antibody, Histone H3 antibody (nuclear marker) and GAPDH antibody (cytoplasmic marker). Nuclear Protein Extraction Kit.



All lanes: Anti-Lamin B1 antibody - at 1/2000 dilution, Lysates/proteins at 50 µg per lane. This blot was produced using a 7.5% SDS-PAGE. The Nitrocellulose membrane was then blocked for an hour before being incubated with orb1294412 overnight at 4°C.



Immunofluorescence: cells were fixed with 4% paraformaldehyde for 10 min at RT, permeabilized with 0.1% NP-40 for 10 min at RT then blocked with 5% BSA for 30 min at room temperature. Cells were stained with orb1294412 anti-Lamin B1 antibody (red) at 1:200 and 4°C. DAPI (blue) was used as the nuclear counter stain.

**Biorbyt Ltd.**

7 Signet Court, Swann Road  
Cambridge  
CB5 8LA  
United Kingdom

Email: [info@biorbyt.com](mailto:info@biorbyt.com), [support@biorbyt.com](mailto:support@biorbyt.com)  
Phone: [+44 \(0\)1223 859353](tel:+44(0)1223859353) | Fax: [+1 \(415\) 651-8558](tel:+1(415)651-8558)

**Biorbyt LLC**

68 TW Alexander Drive  
Research Triangle Park  
Durham  
NC 27713  
United States

Email: [info@biorbyt.com](mailto:info@biorbyt.com), [support@biorbyt.com](mailto:support@biorbyt.com)  
Phone: [+1 \(415\) 906-5211](tel:+1(415)906-5211) | Fax: [+1 \(415\) 651-8558](tel:+1(415)651-8558)