

Product Datasheet

Beta Tubulin 3 Rabbit Polyclonal Antibody (orb1294407)

Catalog Number	orb1294407
Category	Antibodies
Description	Rabbit polyclonal antibody to Beta Tubulin 3
Target	Beta Tubulin 3 / Tuj1
Clonality	Polyclonal
Species/Host	Rabbit
Isotype	Rabbit-IgG
Conjugation	Unconjugated
Reactivity	Human, Mouse, Rat
Buffer/Preservatives	100mM Tris Glycine, 1% rAlbumin, 20% Glycerol (pH7). 0.025% ProClin 300 was added as a preservative
Immunogen	Synthetic peptide / encompassing a sequence within the C-terminus region.
Tested applications	IF, IHC-Fr, IHC-P, WB
Dilution range	Western Blot 1:5000 - 1:10000, Immunofluorescence 1:200-1:500, Immunohistochemistry (Paraffin) 1:100-1:300, Immunohistochemistry (Frozen) 1:100-1:300
Antibody Type	Primary Antibody
Storage	Maintain refrigerated at 2-8°C for up to 2 weeks. For long term storage store at -20°C in small aliquots to prevent freeze-thaw cycles.

Biorbyt Ltd.

7 Signet Court, Swann Road
Cambridge
CB5 8LA
United Kingdom

Email: info@biorbyt.com, support@biorbyt.com

Phone: [+44 \(0\)1223 859353](tel:+44(0)1223859353) | Fax: [+1 \(415\) 651-8558](tel:+1(415)651-8558)

Biorbyt LLC

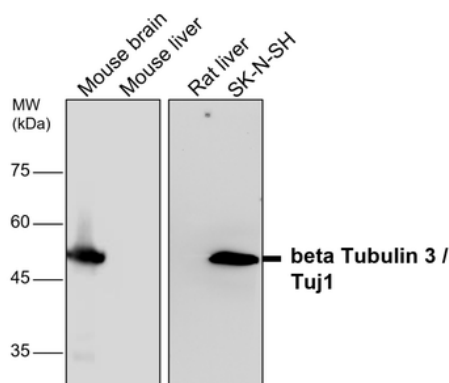
68 TW Alexander Drive
Research Triangle Park
Durham
NC 27713
United States

Email: info@biorbyt.com, support@biorbyt.com

Phone: [+1 \(415\) 906-5211](tel:+1(415)906-5211) | Fax: [+1 \(415\) 651-8558](tel:+1(415)651-8558)

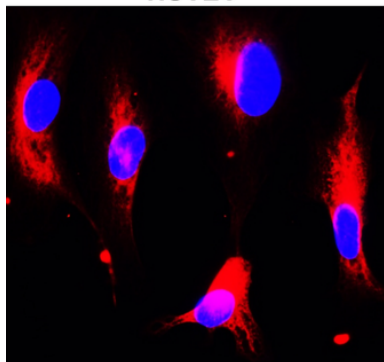
Note For research use only

Expiration Date 12 months from date of receipt.

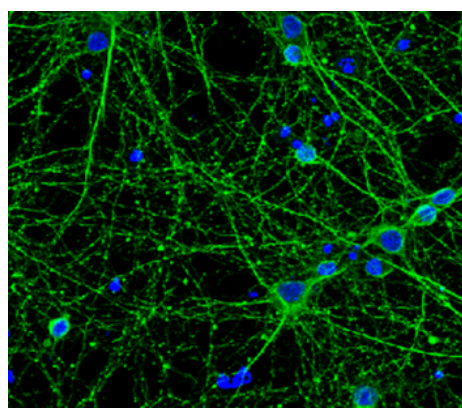


All lanes: anti-Beta Tubulin 3/ Tuj1 antibody at 1/5000 dilution, Lysates/proteins at 20 µg per lane. This blot was produced using a 10% SDS-PAGE. Nitrocellulose membrane was then blocked for an hour before being incubated with orb1294407 overnight at 4°C.

HUVEC



Cells were fixed with 4% PFA for 10 min at RT, permeabilized with 0.1% NP-40 for 10 min at RT then blocked with 5% BSA for 30 min at RT. Cells were stained with orb1294407 anti-Tuj1 antibody (red) at 1:200 and 4°C.



Immunofluorescent analysis. Sample: primary cortical neurons, Tuj1 / Beta Tubulin 3 (orb1294407): 1-300, Anti-rabbit 488: 1-500, Fixed: 4% paraformaldehyde at RT for 20 min.

Biorbyt Ltd.

7 Signet Court, Swann Road
Cambridge
CB5 8LA
United Kingdom

Email: info@biorbyt.com, support@biorbyt.com

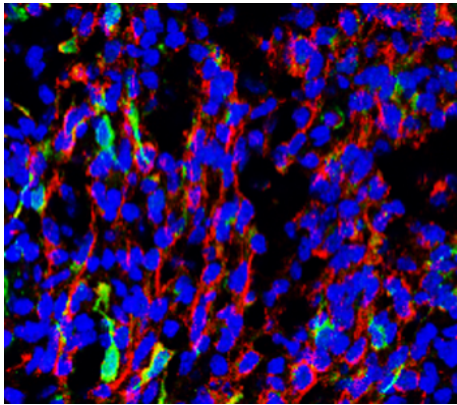
Phone: +44 (0)1223 859353 | Fax: +1 (415) 651-8558

Biorbyt LLC

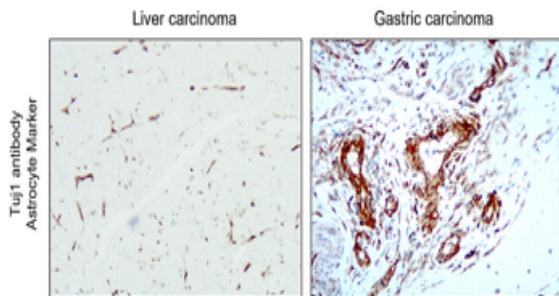
68 TW Alexander Drive
Research Triangle Park
Durham
NC 27713
United States

Email: info@biorbyt.com, support@biorbyt.com

Phone: +1 (415) 906-5211 | Fax: +1 (415) 651-8558



Immunohistochemical analysis (Frozen sectioned), Sample: Rat brain, Red: Tuj1 antibody (orb1294407), Blue: DAPI.



Immunohistochemical analysis of paraffin embedded Human cancer tissue labeling Tuj1 with orb1294407 at 1/200.

Biorbyt Ltd.

7 Signet Court, Swann Road
Cambridge
CB5 8LA
United Kingdom

Email: info@biorbyt.com, support@biorbyt.com

Phone: [+44 \(0\)1223 859353](tel:+44(0)1223859353) | Fax: [+1 \(415\) 651-8558](tel:+1(415)651-8558)

Biorbyt LLC

68 TW Alexander Drive
Research Triangle Park
Durham
NC 27713
United States

Email: info@biorbyt.com, support@biorbyt.com

Phone: [+1 \(415\) 906-5211](tel:+1(415)906-5211) | Fax: [+1 \(415\) 651-8558](tel:+1(415)651-8558)