

Product Datasheet

AIF Rabbit Polyclonal Antibody (orb1294405)

Catalog Number	orb1294405
Category	Antibodies
Description	Rabbit polyclonal antibody to Iba1
Target	AIF / Iba1
Clonality	Polyclonal
Species/Host	Rabbit
Isotype	Rabbit-IgG
Conjugation	Unconjugated
Reactivity	Human, Mouse, Rat
Buffer/Preservatives	100mM Tris Glycine, 1% rAlbumin, 20% Glycerol (pH7). 0.025% ProClin 300 was added as a preservative
Immunogen	Synthetic peptide / encompassing a sequence within the C-terminus region.
Tested applications	IF, IHC-Fr, IHC-P, WB
Dilution range	Western Blot 1:500-1:1000, Immunofluorescence 1:100-1:300, Immunohistochemistry (Paraffin) 1:100-1:300, Immunohistochemistry (Frozen) 1:100-1:300
Antibody Type	Primary Antibody
Storage	Maintain refrigerated at 2-8°C for up to 2 weeks. For long term storage store at -20°C in small aliquots to prevent freeze-thaw cycles.
Note	For research use only

Biorbyt Ltd.

7 Signet Court, Swann Road
Cambridge
CB5 8LA
United Kingdom

Email: info@biorbyt.com, support@biorbyt.com

Phone: [+44 \(0\)1223 859353](tel:+44(0)1223859353) | Fax: [+1 \(415\) 651-8558](tel:+1(415)651-8558)

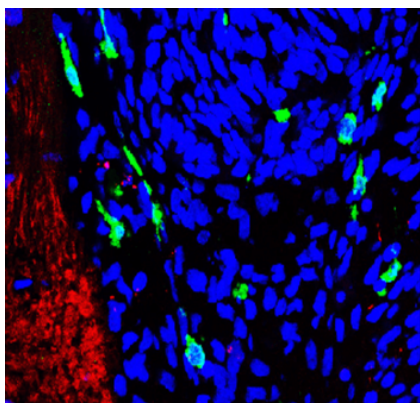
Biorbyt LLC

68 TW Alexander Drive
Research Triangle Park
Durham
NC 27713
United States

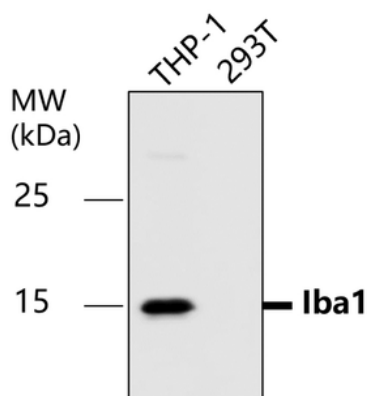
Email: info@biorbyt.com, support@biorbyt.com

Phone: [+1 \(415\) 906-5211](tel:+1(415)906-5211) | Fax: [+1 \(415\) 651-8558](tel:+1(415)651-8558)

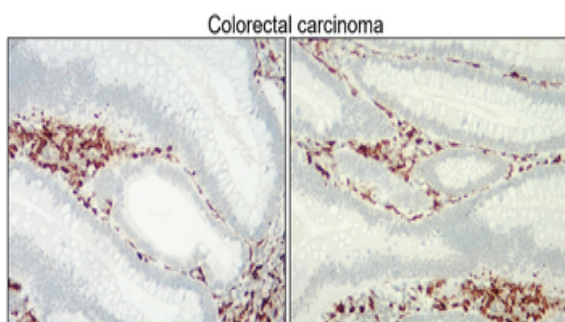
Expiration Date 12 months from date of receipt.



Frozen sectioned for immunohistochemical analysis. Sample: Frozen sectioned Rat brain. Green: Iba1 antibody (orb1294405), Red: TUJ1 antibody, Blue: DAPI.



Iba1/AIF1 antibody - at 1/500 dilution, Lysates at 45 μ g per lane, This blot was produced using a 15% SDS-PAGE. PVDF membrane was then blocked with 3% BSA for an hour before being incubated with orb1294405 overnight at 4°C.



Immunohistochemical analysis of paraffin embedded Human cancer tissue labeling Iba1 with orb1294405 at 1/200. Epitope Retrieval methods: Citrate Buffer, pH 6.0.

Biorbyt Ltd.

7 Signet Court, Swann Road
Cambridge
CB5 8LA
United Kingdom

Email: info@biorbyt.com, support@biorbyt.com

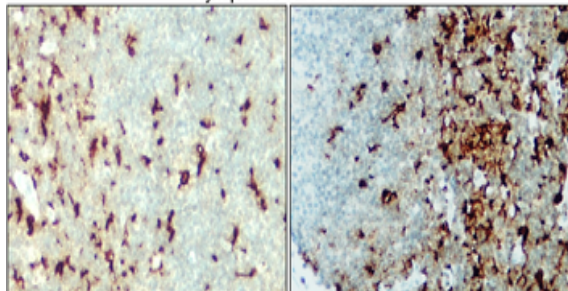
Phone: +44 (0)1223 859353 | Fax: +1 (415) 651-8558

Biorbyt LLC

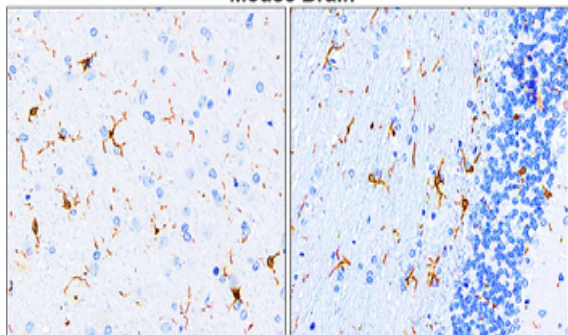
68 TW Alexander Drive
Research Triangle Park
Durham
NC 27713
United States

Email: info@biorbyt.com, support@biorbyt.com

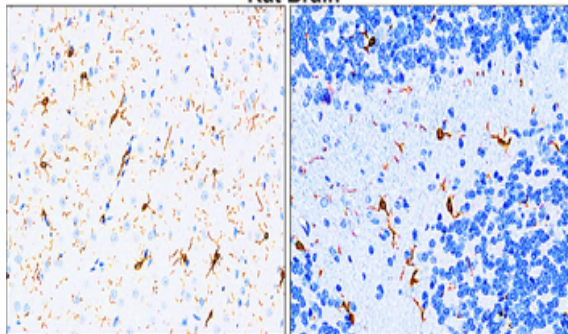
Phone: +1 (415) 906-5211 | Fax: +1 (415) 651-8558

Lymph node carcinoma

Immunohistochemical analysis of paraffin embedded Human cancer tissue labeling Iba1 with orb1294405 at 1/200. Epitope Retrieval methods: Citrate Buffer, pH 6.0.

Mouse Brain

Immunohistochemical analysis of paraffin embedded Mouse brain tissue labeling Iba1 with orb1294405 at 1/200. Epitope Retrieval methods: Citrate Buffer, pH 6.0.

Rat Brain

Immunohistochemical analysis of paraffin embedded Rat brain tissue labeling Iba1 with orb1294405 at 1/200. Epitope Retrieval methods: Citrate Buffer, pH 6.0.

Biorbyt Ltd.

7 Signet Court, Swann Road
Cambridge
CB5 8LA
United Kingdom

Email: info@biorbyt.com, support@biorbyt.com

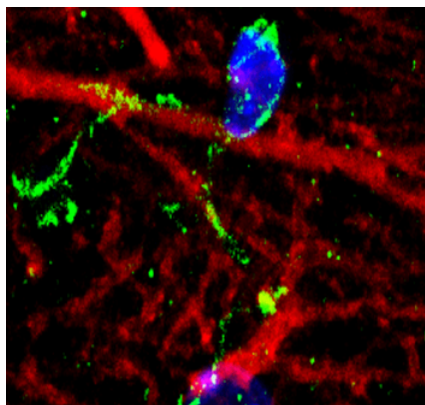
Phone: +44 (0)1223 859353 | Fax: +1 (415) 651-8558

Biorbyt LLC

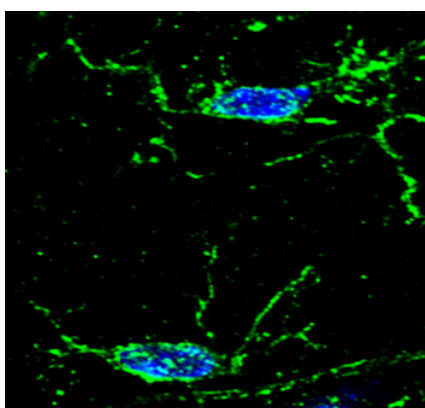
68 TW Alexander Drive
Research Triangle Park
Durham
NC 27713
United States

Email: info@biorbyt.com, support@biorbyt.com

Phone: +1 (415) 906-5211 | Fax: +1 (415) 651-8558



Immunohistochemical of frozen sections. Sample: mouse cerebellum. Green: Iba1 antibody (orb1294405): 1-200, Anti-rabbit 488: 1-500. DAPI (blue) was used as the nuclear counter stain.



Immunohistochemical of frozen sections. Sample: mouse hippocampus. Green: Iba1 antibody (orb1294405): 1-200, Anti-rabbit 488: 1-500. DAPI (blue) was used as the nuclear counter stain.

Biorbyt Ltd.

7 Signet Court, Swann Road
Cambridge
CB5 8LA
United Kingdom

Email: info@biorbyt.com, support@biorbyt.com
Phone: [+44 \(0\)1223 859353](tel:+44(0)1223859353) | Fax: [+1 \(415\) 651-8558](tel:+1(415)651-8558)

Biorbyt LLC

68 TW Alexander Drive
Research Triangle Park
Durham
NC 27713
United States

Email: info@biorbyt.com, support@biorbyt.com
Phone: [+1 \(415\) 906-5211](tel:+1(415)906-5211) | Fax: [+1 \(415\) 651-8558](tel:+1(415)651-8558)