

Product Datasheet

NaK ATPase alpha 1 Rabbit Polyclonal Antibody (orb1294398)

Catalog Number	orb1294398
Category	Antibodies
Description	Rabbit polyclonal antibody to Sodium Potassium ATPase
Target	NaK ATPase alpha 1 / ATP1A1
Clonality	Polyclonal
Species/Host	Rabbit
Isotype	Rabbit-IgG
Conjugation	Unconjugated
Reactivity	Human, Mouse, Rat
Buffer/Preservatives	100mM Tris Glycine, 20% Glycerol (pH7). 0.025% ProClin 300 was added as a preservative
Immunogen	Synthetic peptide / encompassing a sequence within the N-terminus region.
Tested applications	IF, IHC, WB
Dilution range	Western Blot 1:500-1:1000, Immunofluorescence 1:200-1:400, Immunohistochemistry (Paraffin) 1:100-1:200
Antibody Type	Primary Antibody
Storage	Maintain refrigerated at 2-8°C for up to 2 weeks. For long term storage store at -20°C in small aliquots to prevent freeze-thaw cycles.

Biorbyt Ltd.

7 Signet Court, Swann Road
Cambridge
CB5 8LA
United Kingdom

Email: info@biorbyt.com, support@biorbyt.com

Phone: [+44 \(0\)1223 859353](tel:+44(0)1223859353) | Fax: [+1 \(415\) 651-8558](tel:+1(415)651-8558)

Biorbyt LLC

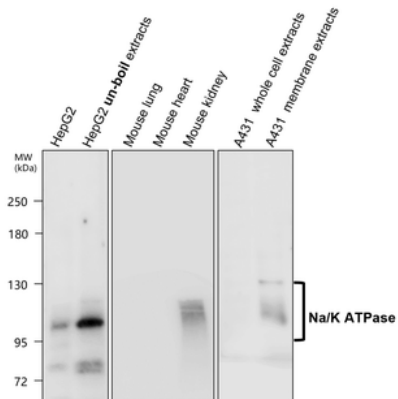
68 TW Alexander Drive
Research Triangle Park
Durham
NC 27713
United States

Email: info@biorbyt.com, support@biorbyt.com

Phone: [+1 \(415\) 906-5211](tel:+1(415)906-5211) | Fax: [+1 \(415\) 651-8558](tel:+1(415)651-8558)

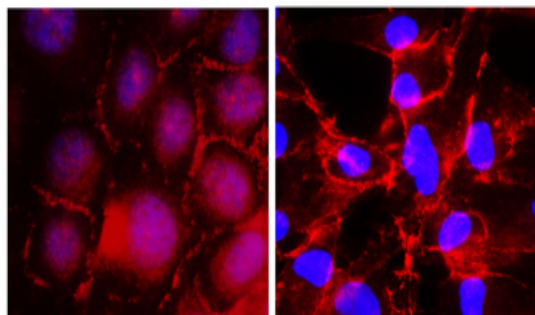
Note For research use only

Expiration Date 12 months from date of receipt.



anti-Na/K ATPase antibody at 1/700 dilution, Lysates/proteins at 40 µg per lane. This blot was produced using a 5% SDS-PAGE. Nitrocellulose membrane was then blocked for an hour before being incubated with orb1294398 overnight at 4°C.

Na/K ATPase

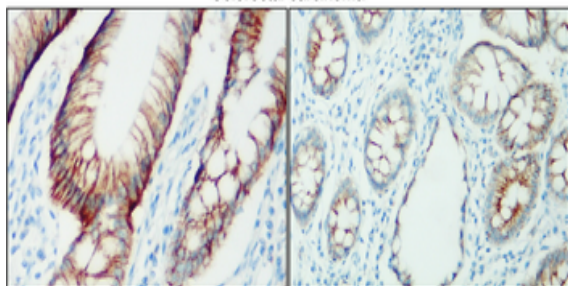


HepG2

A431

Cells were fixed with 4% paraformaldehyde for 10 min at RT, permeabilized with 0.1% NP-40 for 10 min at RT then blocked with 5% BSA for 30 min at room temperature. Cells were stained with orb1294398 anti-Na/K ATPase antibody (red) at 1:300 and 4°C. DAPI (blue) was used as the nuclear counter stain.

Colorectal carcinoma



Immunohistochemical analysis of paraffin embedded human cancer tissue labeling Na/K ATPase with orb1294398 at 1/100.

Biorbyt Ltd.

7 Signet Court, Swann Road
Cambridge
CB5 8LA
United Kingdom

Email: info@biorbyt.com, support@biorbyt.com
Phone: +44 (0)1223 859353 | Fax: +1 (415) 651-8558

Biorbyt LLC

68 TW Alexander Drive
Research Triangle Park
Durham
NC 27713
United States

Email: info@biorbyt.com, support@biorbyt.com
Phone: +1 (415) 906-5211 | Fax: +1 (415) 651-8558