

Product Datasheet

OCLN Rabbit Polyclonal Antibody (orb1294379)

Catalog Number	orb1294379
Category	Antibodies
Description	Rabbit polyclonal antibody to Occludin
Target	OCLN / occludin
Clonality	Polyclonal
Species/Host	Rabbit
Isotype	Rabbit-IgG
Conjugation	Unconjugated
Reactivity	Human, Mouse, Rat
Buffer/Preservatives	100mM Tris Glycine, 1% rAlbumin, 20% Glycerol (pH7). 0.025% ProClin 300 was added as a preservative
Immunogen	Synthetic peptide / Intracellular domain corresponding to Human Occludin
Tested applications	IF, IHC-Fr, WB
Dilution range	Western Blot 1:500-1:1000, Immunofluorescence 1:200-1:400, Immunohistochemistry (Frozen section)1:100
Antibody Type	Primary Antibody
Storage	Maintain refrigerated at 2-8°C for up to 2 weeks. For long term storage store at -20°C in small aliquots to prevent freeze-thaw cycles.
Note	For research use only

Biorbyt Ltd.

7 Signet Court, Swann Road
Cambridge
CB5 8LA
United Kingdom

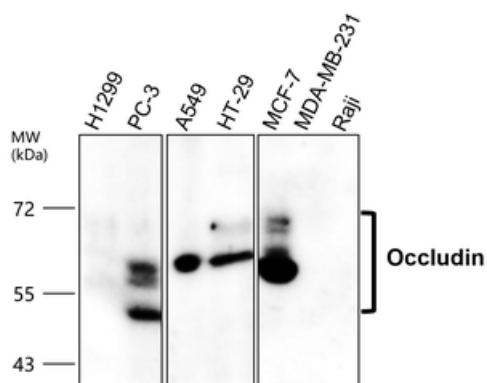
Email: info@biorbyt.com, support@biorbyt.com
Phone: [+44 \(0\)1223 859353](tel:+44(0)1223859353) | Fax: [+1 \(415\) 651-8558](tel:+1(415)651-8558)

Biorbyt LLC

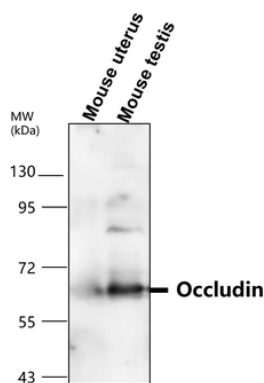
68 TW Alexander Drive
Research Triangle Park
Durham
NC 27713-2847
United States

Email: info@biorbyt.com, support@biorbyt.com
Phone: [+1 \(415\) 906-5211](tel:+1(415)906-5211) | Fax: [+1 \(415\) 651-8558](tel:+1(415)651-8558)

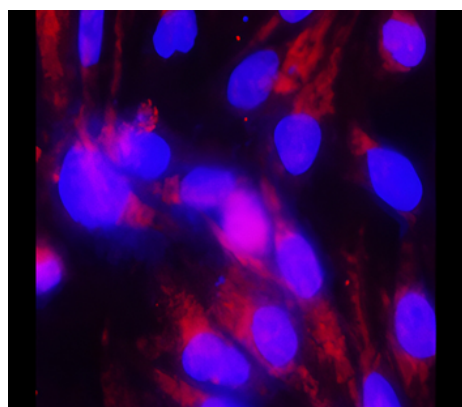
Expiration Date 12 months from date of receipt.



All lanes: anti-Occludin antibody - at 1/1000 dilution, Lysates/proteins at 50 µg per lane. This blot was produced using a 7.5% SDS-PAGE. Nitrocellulose membrane was then blocked for an hour before being incubated with orb1294379 overnight at 4°C.



All lanes: anti-Occludin antibody - at 1/1000 dilution, Lysates/proteins at 50 µg per lane. This blot was produced using a 7.5% SDS-PAGE. Nitrocellulose membrane was then blocked for an hour before being incubated with orb1294379 overnight at 4°C.



Immunofluorescence: cells were fixed with 4% paraformaldehyde for 10 min at RT, permeabilized with 0.1% NP-40 for 10 min at RT then blocked with 5% BSA for 30 min at room temperature. Cells were stained with orb1294379 anti-Occludin antibody (red) at 1:200 and 4°C. DAPI (blue) was used as the nuclear counter stain.

Biorbyt Ltd.

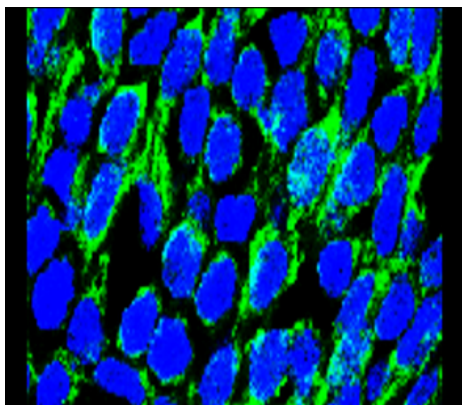
7 Signet Court, Swann Road
Cambridge
CB5 8LA
United Kingdom

Email: info@biorbyt.com, support@biorbyt.com
Phone: +44 (0)1223 859353 | Fax: +1 (415) 651-8558

Biorbyt LLC

68 TW Alexander Drive
Research Triangle Park
Durham
NC 27713-2847
United States

Email: info@biorbyt.com, support@biorbyt.com
Phone: +1 (415) 906-5211 | Fax: +1 (415) 651-8558



Occludin antibody by Frozen-section. Sample: Rat brain. Green: Occludin antibody diluted at 1:100. Blue: DAPI.

Biorbyt Ltd.

7 Signet Court, Swann Road
Cambridge
CB5 8LA
United Kingdom

Email: info@biorbyt.com, support@biorbyt.com

Phone: [+44 \(0\)1223 859353](tel:+44(0)1223859353) | Fax: [+1 \(415\) 651-8558](tel:+1(415)651-8558)

Biorbyt LLC

68 TW Alexander Drive
Research Triangle Park
Durham
NC 27713-2847
United States

Email: info@biorbyt.com, support@biorbyt.com

Phone: [+1 \(415\) 906-5211](tel:+1(415)906-5211) | Fax: [+1 \(415\) 651-8558](tel:+1(415)651-8558)