

Product Datasheet

MMP2 Rabbit Polyclonal Antibody (orb1294375)

Catalog Number	orb1294375
Category	Antibodies
Description	Rabbit polyclonal antibody to MMP 2
Target	MMP2
Clonality	Polyclonal
Species/Host	Rabbit
Isotype	Rabbit-IgG
Conjugation	Unconjugated
Reactivity	Human, Mouse, Rat
Buffer/Preservatives	100mM Tris Glycine, 1% rAlbumin, 20% Glycerol (pH7). 0.025% ProClin 300 was added as a preservative
Immunogen	Synthetic peptide / encompassing a sequence within the center region
Tested applications	IF, IHC, WB
Dilution range	Western Blot 1:500, Immunofluorescence 1: 100-1:200, Immunohistochemistry (Paraffin) 1: 50-1:100
Antibody Type	Primary Antibody
Storage	Maintain refrigerated at 2-8°C for up to 2 weeks. For long term storage store at -20°C in small aliquots to prevent freeze-thaw cycles.
Note	For research use only

Biorbyt Ltd.

7 Signet Court, Swann Road
Cambridge
CB5 8LA
United Kingdom

Email: info@biorbyt.com, support@biorbyt.com
Phone: [+44 \(0\)1223 859353](tel:+44(0)1223859353) | Fax: [+1 \(415\) 651-8558](tel:+1(415)651-8558)

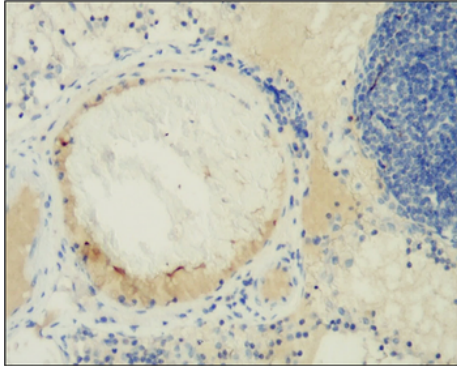
Biorbyt LLC

68 TW Alexander Drive
Research Triangle Park
Durham
NC 27713
United States

Email: info@biorbyt.com, support@biorbyt.com
Phone: [+1 \(415\) 906-5211](tel:+1(415)906-5211) | Fax: [+1 \(415\) 651-8558](tel:+1(415)651-8558)

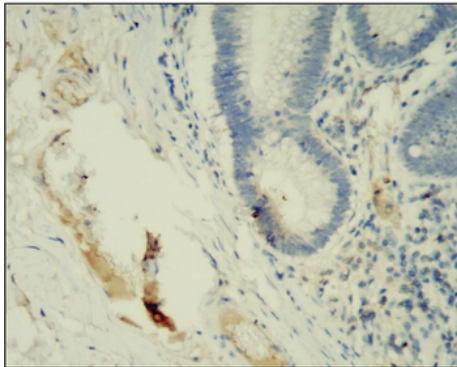
Expiration Date 12 months from date of receipt.

Breast carcinoma



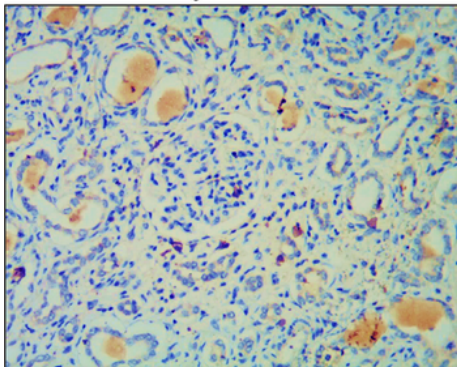
Immunohistochemical analysis of paraffin embedded Human breast cancer tissue labeling MMP2 with orb1294375 at 1/50.

Colorectal carcinoma



Immunohistochemical analysis of paraffin embedded Human colorectal cancer tissue labeling MMP2 with orb1294375 at 1/50.

Kidney carcinoma



Immunohistochemical analysis of paraffin embedded Human kidney cancer tissue labeling MMP2 with orb1294375 at 1/50.

Biorbyt Ltd.

7 Signet Court, Swann Road
Cambridge
CB5 8LA
United Kingdom

Email: info@biorbyt.com, support@biorbyt.com

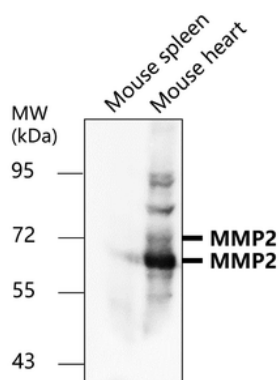
Phone: +44 (0)1223 859353 | Fax: +1 (415) 651-8558

Biorbyt LLC

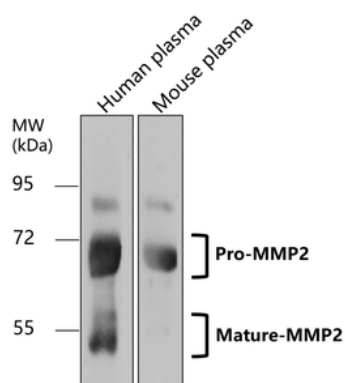
68 TW Alexander Drive
Research Triangle Park
Durham
NC 27713
United States

Email: info@biorbyt.com, support@biorbyt.com

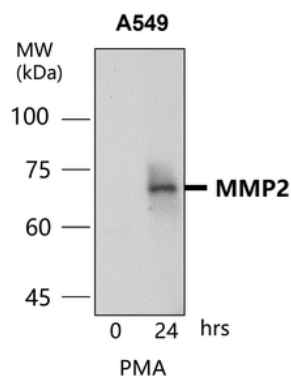
Phone: +1 (415) 906-5211 | Fax: +1 (415) 651-8558



MMP2 antibody at 1/500 dilution. Lysates at 60 µg per lane, This blot was produced using a 7.5% SDS-PAGE. Nitrocellulose membrane was then blocked with 3% BSA for an hour before being incubated with orb1294375 overnight at 4°C.



MMP2 antibody at 1/500 dilution. Lysates at 60 µg per lane, This blot was produced using a 7.5% SDS-PAGE. Nitrocellulose membrane was then blocked with 3% BSA for an hour before being incubated with orb1294375 overnight at 4°C.



MMP2 antibody at 1/500 dilution. Lysates at 60 µg per lane, This blot was produced using a 7.5% SDS-PAGE. Nitrocellulose membrane was then blocked with 3% BSA for an hour before being incubated with orb1294375 overnight at 4°C.

Biorbyt Ltd.

7 Signet Court, Swann Road
Cambridge
CB5 8LA
United Kingdom

Email: info@biorbyt.com, support@biorbyt.com
Phone: +44 (0)1223 859353 | Fax: +1 (415) 651-8558

Biorbyt LLC

68 TW Alexander Drive
Research Triangle Park
Durham
NC 27713
United States

Email: info@biorbyt.com, support@biorbyt.com
Phone: +1 (415) 906-5211 | Fax: +1 (415) 651-8558