

Product Datasheet

LC3B Rabbit Polyclonal Antibody (orb1294361)

Catalog Number	orb1294361
Category	Antibodies
Description	Rabbit polyclonal antibody to LC3B
Target	LC3B
Clonality	Polyclonal
Species/Host	Rabbit
Isotype	Rabbit-IgG
Conjugation	Unconjugated
Reactivity	Human, Mouse, Rat
Buffer/Preservatives	100mM Tris Glycine, 1% rAlbumin, 20% Glycerol (pH7). 0.025% ProClin 300 was added as a preservative
Immunogen	Synthetic peptide / encompassing a sequence within the N-terminus region.
Tested applications	IF, IHC, WB
Dilution range	Western Blot 1:1000 - 1:2000, Immunofluorescence 1:200 - 1:500, Immunohistochemistry (Paraffin) 1:100 - 1:200
Antibody Type	Primary Antibody
Storage	Maintain refrigerated at 2-8°C for up to 2 weeks. For long term storage store at -20°C in small aliquots to prevent freeze-thaw cycles.
Note	For research use only

Biorbyt Ltd.

7 Signet Court, Swann Road
Cambridge
CB5 8LA
United Kingdom

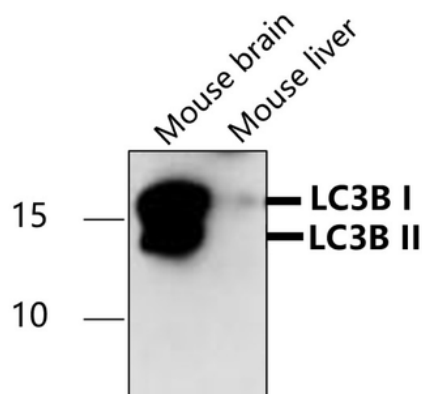
Email: info@biorbyt.com, support@biorbyt.com
Phone: [+44 \(0\)1223 859353](tel:+44(0)1223859353) | Fax: [+1 \(415\) 651-8558](tel:+1(415)651-8558)

Biorbyt LLC

68 TW Alexander Drive
Research Triangle Park
Durham
NC 27713
United States

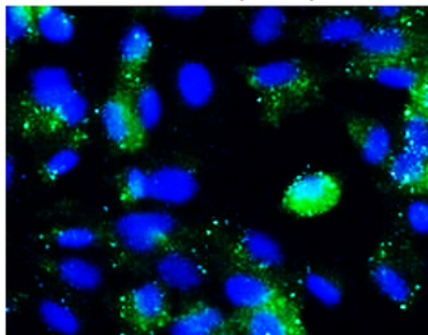
Email: info@biorbyt.com, support@biorbyt.com
Phone: [+1 \(415\) 906-5211](tel:+1(415)906-5211) | Fax: [+1 \(415\) 651-8558](tel:+1(415)651-8558)

Expiration Date 12 months from date of receipt.



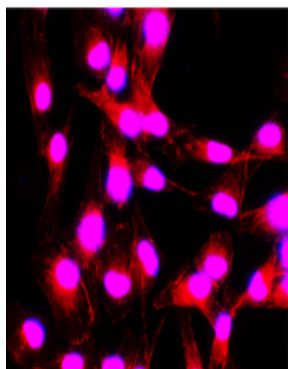
All lanes: Anti-LC3B antibody at 1/1000 dilution, Lysates/proteins at 50 μ g per lane. This blot was produced using a 15% SDS-PAGE. The gel was run at 140V for 50 minutes before being transferred onto a Nitrocellulose membrane at 18V for 60 minutes. The membrane was then blocked for an hour before being incubated with orb1294361 overnight at 4°C.

Cardiomyocytes

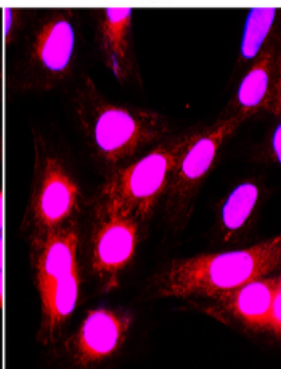


Immunofluorescence: cells were fixed with 4% paraformaldehyde for 10 min at RT, permeabilized with 0.1% NP-40 for 10 min at RT then blocked with 5% BSA for 30 min at room temperature. Cells were stained with orb1294361 anti-LC3B antibody (red) at 1:200 and 4°C. DAPI (blue) was used as the nuclear counter stain.

CTX TNA2



RG2



Immunofluorescence: cells were fixed with 4% paraformaldehyde for 10 min at RT, permeabilized with 0.1% NP-40 for 10 min at RT then blocked with 5% BSA for 30 min at room temperature. Cells were stained with orb1294361 anti-LC3B antibody (red) at 1:200 and 4°C. DAPI (blue) was used as the nuclear counter stain.

Biorbyt Ltd.

7 Signet Court, Swann Road
Cambridge
CB5 8LA
United Kingdom

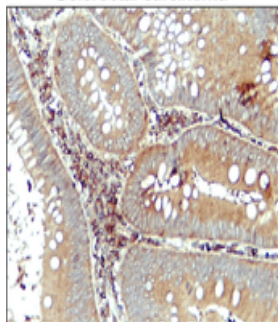
Email: info@biorbyt.com, support@biorbyt.com
Phone: +44 (0)1223 859353 | Fax: +1 (415) 651-8558

Biorbyt LLC

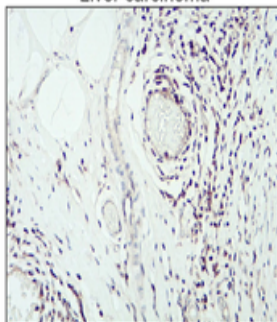
68 TW Alexander Drive
Research Triangle Park
Durham
NC 27713
United States

Email: info@biorbyt.com, support@biorbyt.com
Phone: +1 (415) 906-5211 | Fax: +1 (415) 651-8558

Colorectal carcinoma

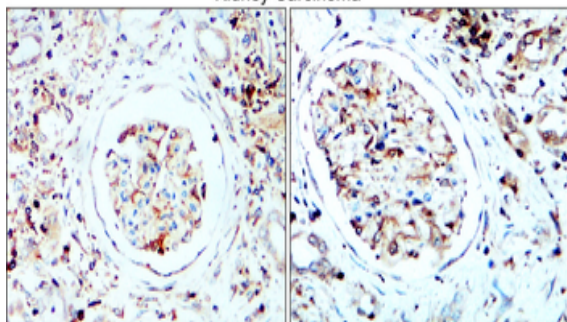


Liver carcinoma



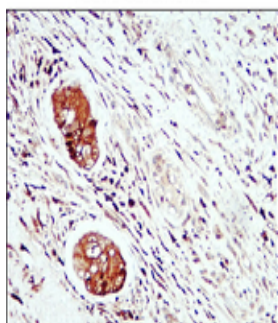
Immunohistochemical analysis of paraffin embedded Human colorectal and liver cancer tissue labeling LC3B with orb1294361 at 1/100.

Kidney Carcinoma

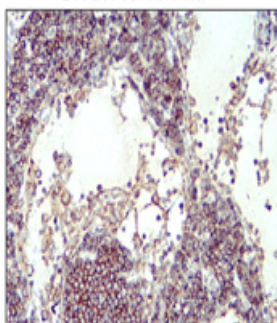


Immunohistochemical analysis of paraffin embedded Human Kidney cancer tissue labeling LC3B with orb1294361 at 1/100.

Testis carcinoma



Breast carcinoma



Immunohistochemical analysis of paraffin embedded Human testis and breast cancer tissue labeling LC3B with orb1294361 at 1/100.

Biorbyt Ltd.

7 Signet Court, Swann Road
Cambridge
CB5 8LA
United Kingdom

Email: info@biorbyt.com, support@biorbyt.com

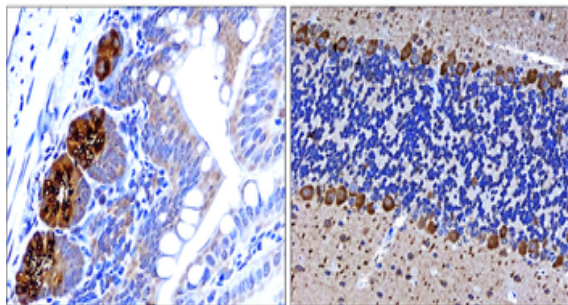
Phone: +44 (0)1223 859353 | Fax: +1 (415) 651-8558

Biorbyt LLC

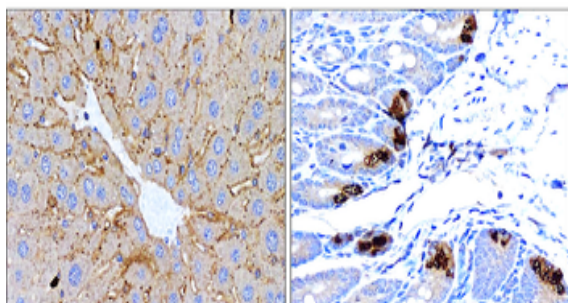
68 TW Alexander Drive
Research Triangle Park
Durham
NC 27713
United States

Email: info@biorbyt.com, support@biorbyt.com

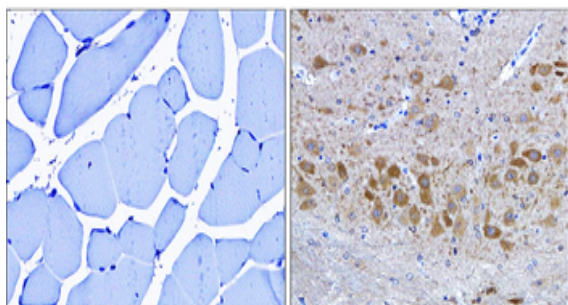
Phone: +1 (415) 906-5211 | Fax: +1 (415) 651-8558



Immunohistochemical analysis of paraffin embedded mouse tissue labeling LC3B with orb1294361 at 1/200.



Immunohistochemical analysis of paraffin embedded mouse tissue labeling LC3B with orb1294361 at 1/200.



Immunohistochemical analysis of paraffin embedded mouse tissue labeling LC3B with orb1294361 at 1/200.

Biorbyt Ltd.

7 Signet Court, Swann Road
Cambridge
CB5 8LA
United Kingdom

Email: info@biorbyt.com, support@biorbyt.com

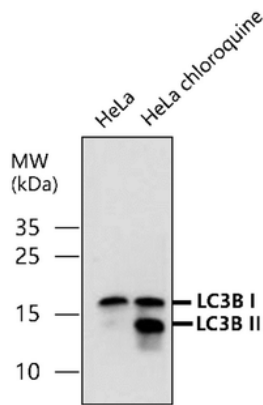
Phone: +44 (0)1223 859353 | Fax: +1 (415) 651-8558

Biorbyt LLC

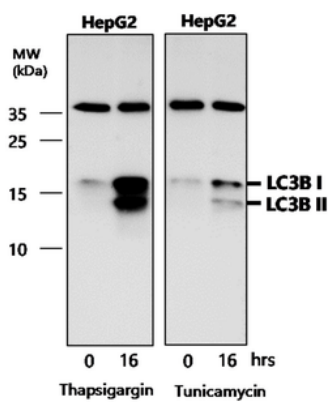
68 TW Alexander Drive
Research Triangle Park
Durham
NC 27713
United States

Email: info@biorbyt.com, support@biorbyt.com

Phone: +1 (415) 906-5211 | Fax: +1 (415) 651-8558



LC3B antibody at 1/1000 dilution. Lysates/proteins at 50 µg per lane. This blot was produced using a 15% SDS-PAGE. Nitrocellulose membrane was then blocked for an hour before being incubated with orb1294361 overnight at 4°C.



LC3B antibody at 1/1000 dilution. Lysates/proteins at 50 µg per lane. This blot was produced using a 15% SDS-PAGE. Nitrocellulose membrane was then blocked for an hour before being incubated with orb1294361 overnight at 4°C.

Biorbyt Ltd.

7 Signet Court, Swann Road
Cambridge
CB5 8LA
United Kingdom

Email: info@biorbyt.com, support@biorbyt.com

Phone: +44 (0)1223 859353 | Fax: +1 (415) 651-8558

Biorbyt LLC

68 TW Alexander Drive
Research Triangle Park
Durham
NC 27713
United States

Email: info@biorbyt.com, support@biorbyt.com

Phone: +1 (415) 906-5211 | Fax: +1 (415) 651-8558