

Product Datasheet

VEGF Rabbit Polyclonal Antibody (orb1294346)

Catalog Number	orb1294346
Category	Antibodies
Description	Rabbit polyclonal antibody to VEGF
Target	VEGF
Clonality	Polyclonal
Species/Host	Rabbit
Isotype	Rabbit-IgG
Conjugation	Unconjugated
Reactivity	Human, Mouse, Rat
Buffer/Preservatives	100mM Tris Glycine, 20% Glycerol (pH7). 0.025% ProClin 300 was added as a preservative
Immunogen	Synthetic peptide / encompassing a sequence within the center region
Tested applications	IF, IHC, WB
Dilution range	Western Blot 1:500–1:1000, Immunofluorescence 1:200–1:500, Immunohistochemistry (Paraffin) 1:100–1:300, Immunoprecipitation : Reported in the literature, not verified in house.
Antibody Type	Primary Antibody
Storage	Maintain refrigerated at 2-8°C for up to 2 weeks. For long term storage store at -20°C in small aliquots to prevent freeze-thaw cycles.
Note	For research use only

Biorbyt Ltd.

7 Signet Court, Swann Road
Cambridge
CB5 8LA
United Kingdom

Email: info@biorbyt.com, support@biorbyt.com

Phone: [+44 \(0\)1223 859353](tel:+44(0)1223859353) | Fax: [+1 \(415\) 651-8558](tel:+1(415)651-8558)

Biorbyt LLC

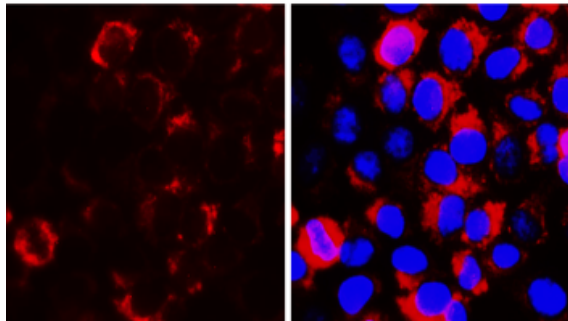
68 TW Alexander Drive
Research Triangle Park
Durham
NC 27713
United States

Email: info@biorbyt.com, support@biorbyt.com

Phone: [+1 \(415\) 906-5211](tel:+1(415)906-5211) | Fax: [+1 \(415\) 651-8558](tel:+1(415)651-8558)

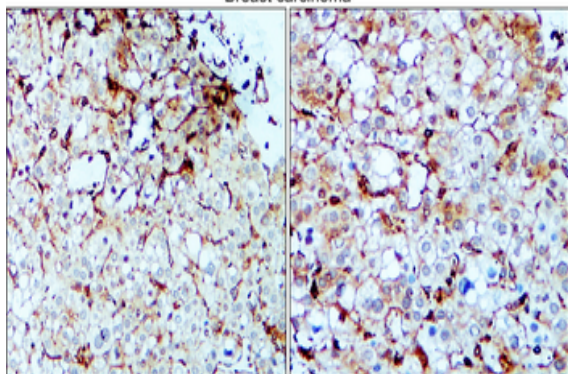
Expiration Date 12 months from date of receipt.

VEGF



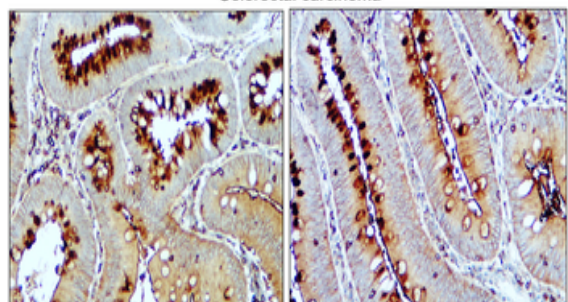
Immunofluorescence: cells were fixed with 4% paraformaldehyde for 10 min at RT, permeabilized with 0.1% NP-40 for 10 min at RT then blocked with 5% BSA for 30 min at room temperature. Cells were stained with orb1294346 anti-VEGF antibody (red) at 1:200 and 4°C. DAPI (blue) was used as the nuclear counter stain.

Breast carcinoma



Immunohistochemical analysis of paraffin embedded Human cancer tissue labeling VEGF with orb1294346 at 1/100.

Colorectal carcinoma



Immunohistochemical analysis of paraffin embedded Human Colorectal cancer tissue labeling VEGF with orb1294346 at 1/100.

Biorbyt Ltd.

7 Signet Court, Swann Road
Cambridge
CB5 8LA
United Kingdom

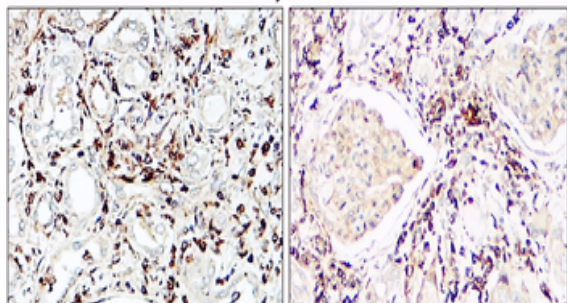
Email: info@biorbyt.com, support@biorbyt.com
Phone: +44 (0)1223 859353 | Fax: +1 (415) 651-8558

Biorbyt LLC

68 TW Alexander Drive
Research Triangle Park
Durham
NC 27713
United States

Email: info@biorbyt.com, support@biorbyt.com
Phone: +1 (415) 906-5211 | Fax: +1 (415) 651-8558

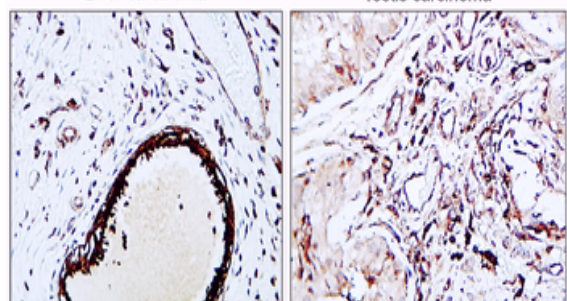
Kidney carcinoma



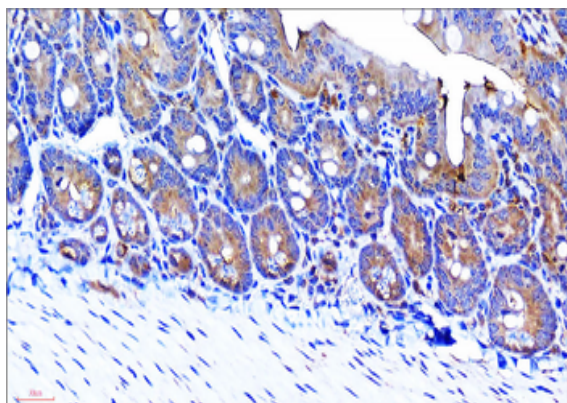
Immunohistochemical analysis of paraffin embedded Human Kidney cancer tissue labeling VEGF with orb1294346 at 1/100.

Liver carcinoma

Testis carcinoma



Immunohistochemical analysis of paraffin embedded Human Liver and Testis cancer tissue labeling VEGF with orb1294346 at 1/100.



Immunohistochemical analysis of paraffin embedded mouse colon labeling VEGF with orb1294346 at 1/200 RT 1hr. Epitope Retrieval methods: Citrate Buffer, pH 6.0.

Biorbyt Ltd.

7 Signet Court, Swann Road
Cambridge
CB5 8LA
United Kingdom

Email: info@biorbyt.com, support@biorbyt.com

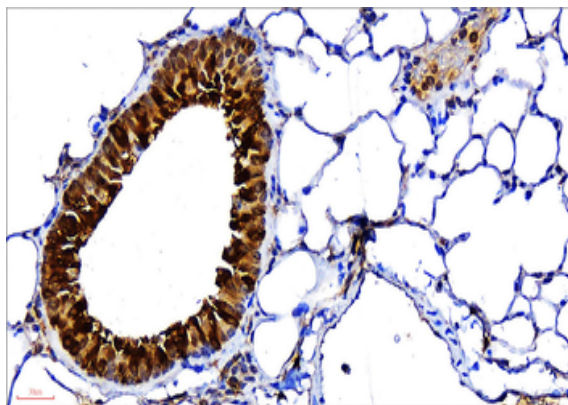
Phone: +44 (0)1223 859353 | Fax: +1 (415) 651-8558

Biorbyt LLC

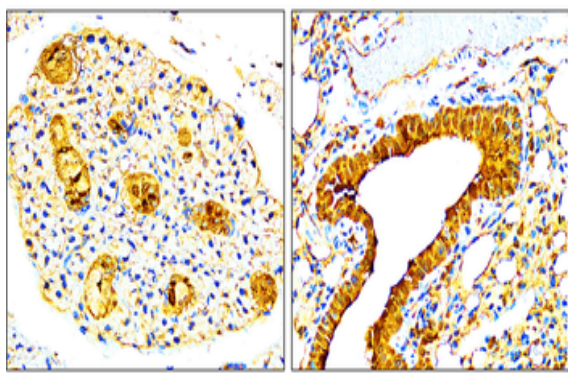
68 TW Alexander Drive
Research Triangle Park
Durham
NC 27713
United States

Email: info@biorbyt.com, support@biorbyt.com

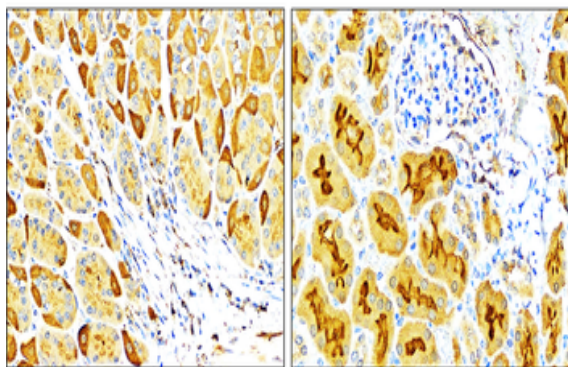
Phone: +1 (415) 906-5211 | Fax: +1 (415) 651-8558



Immunohistochemical analysis of paraffin embedded mouse Lung labeling VEGF with orb1294346 at 1/200 RT 1hr. Epitope Retrieval methods: Citrate Buffer, pH 6.0.



Immunohistochemical analysis of paraffin embedded mouse tissue labeling VEGF with orb1294346 at 1/100 RT 1hr. Epitope Retrieval methods: Citrate Buffer, pH 6.0.



Immunohistochemical analysis of paraffin embedded mouse tissue labeling VEGF with orb1294346 at 1/100 RT 1hr. Epitope Retrieval methods: Citrate Buffer, pH 6.0.

Biorbyt Ltd.

7 Signet Court, Swann Road
Cambridge
CB5 8LA
United Kingdom

Email: info@biorbyt.com, support@biorbyt.com

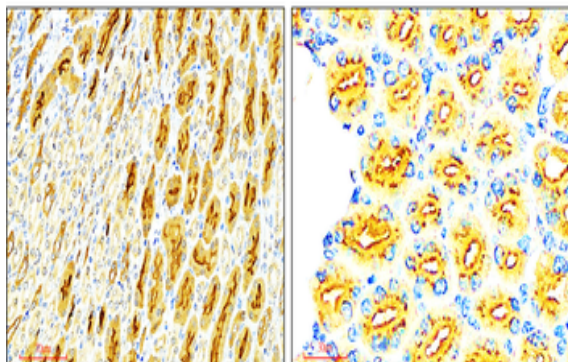
Phone: +44 (0)1223 859353 | Fax: +1 (415) 651-8558

Biorbyt LLC

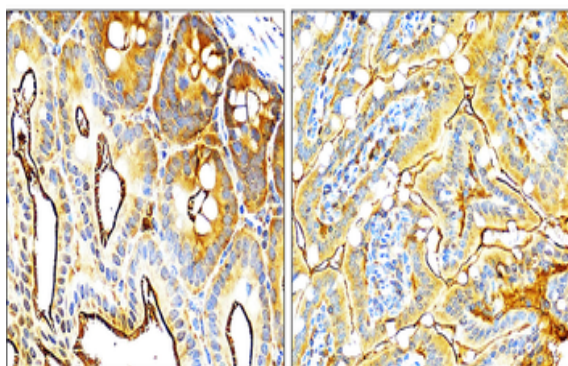
68 TW Alexander Drive
Research Triangle Park
Durham
NC 27713
United States

Email: info@biorbyt.com, support@biorbyt.com

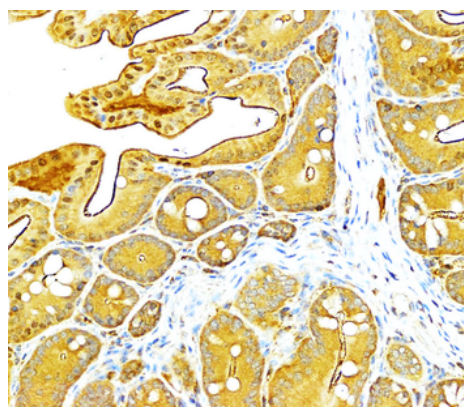
Phone: +1 (415) 906-5211 | Fax: +1 (415) 651-8558



Immunohistochemical analysis of paraffin embedded mouse tissue labeling VEGF with orb1294346 at 1/100 RT 1hr. Epitope Retrieval methods: Citrate Buffer, pH 6.0.



Immunohistochemical analysis of paraffin embedded mouse tissue labeling VEGF with orb1294346 at 1/100 RT 1hr. Epitope Retrieval methods: Citrate Buffer, pH 6.0.



Immunohistochemical analysis of paraffin embedded mouse tissue labeling VEGF with orb1294346 at 1/100 RT 1hr. Epitope Retrieval methods: Citrate Buffer, pH 6.0.

Biorbyt Ltd.

7 Signet Court, Swann Road
Cambridge
CB5 8LA
United Kingdom

Email: info@biorbyt.com, support@biorbyt.com

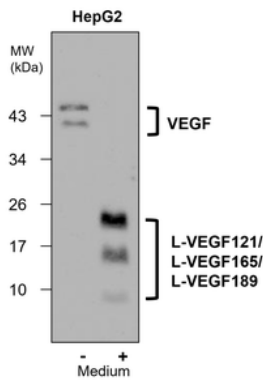
Phone: +44 (0)1223 859353 | Fax: +1 (415) 651-8558

Biorbyt LLC

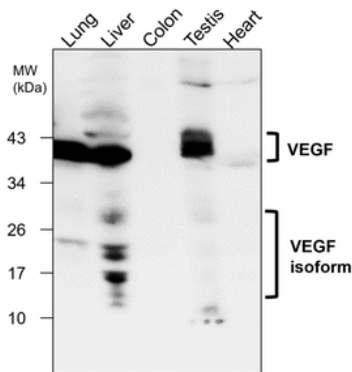
68 TW Alexander Drive
Research Triangle Park
Durham
NC 27713
United States

Email: info@biorbyt.com, support@biorbyt.com

Phone: +1 (415) 906-5211 | Fax: +1 (415) 651-8558



VEGF antibody at 1/1000 dilution. Lysates/proteins at 35 µg per lane. This blot was produced using a 15% SDS-PAGE.



VEGF antibody at 1/1000 dilution. Lysates/proteins at 35 µg per lane. This blot was produced using a 15% SDS-PAGE.

Biorbyt Ltd.

7 Signet Court, Swann Road
Cambridge
CB5 8LA
United Kingdom

Email: info@biorbyt.com, support@biorbyt.com

Phone: +44 (0)1223 859353 | Fax: +1 (415) 651-8558

Biorbyt LLC

68 TW Alexander Drive
Research Triangle Park
Durham
NC 27713
United States

Email: info@biorbyt.com, support@biorbyt.com

Phone: +1 (415) 906-5211 | Fax: +1 (415) 651-8558