

## Product Datasheet

### NFE2L2 Rabbit Polyclonal Antibody (orb1294327)

<b>Catalog Number</b>	orb1294327
<b>Category</b>	Antibodies
<b>Description</b>	Rabbit polyclonal antibody to NRF2
<b>Target</b>	NFE2L2 / NRF2
<b>Clonality</b>	Polyclonal
<b>Species/Host</b>	Rabbit
<b>Isotype</b>	Rabbit-IgG
<b>Conjugation</b>	Unconjugated
<b>Reactivity</b>	Human, Mouse, Rat
<b>Buffer/Preservatives</b>	100mM Tris Glycine, 20% Glycerol (pH7). 0.025% ProClin 300 was added as a preservative
<b>Immunogen</b>	Synthetic peptide / encompassing a sequence within the center region
<b>Tested applications</b>	IF, IHC, WB
<b>Dilution range</b>	Western Blot 1:500-1:1000, Immunofluorescence 1:100-1:200, Immunohistochemistry (Paraffin) 1:100-1:200
<b>Antibody Type</b>	Primary Antibody
<b>Storage</b>	Maintain refrigerated at 2-8°C for up to 2 weeks. For long term storage store at -20°C in small aliquots to prevent freeze-thaw cycles.
<b>Note</b>	For research use only

**Biorbyt Ltd.**

7 Signet Court, Swann Road  
Cambridge  
CB5 8LA  
United Kingdom

Email: [info@biorbyt.com](mailto:info@biorbyt.com), [support@biorbyt.com](mailto:support@biorbyt.com)

Phone: [+44 \(0\)1223 859353](tel:+44(0)1223859353) | Fax: [+1 \(415\) 651-8558](tel:+1(415)651-8558)

**Biorbyt LLC**

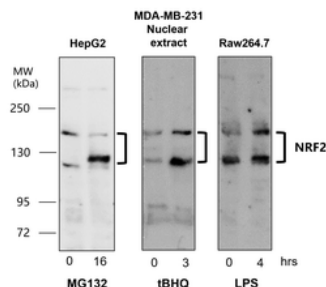
68 TW Alexander Drive  
Research Triangle Park  
Durham  
NC 27713  
United States

Email: [info@biorbyt.com](mailto:info@biorbyt.com), [support@biorbyt.com](mailto:support@biorbyt.com)

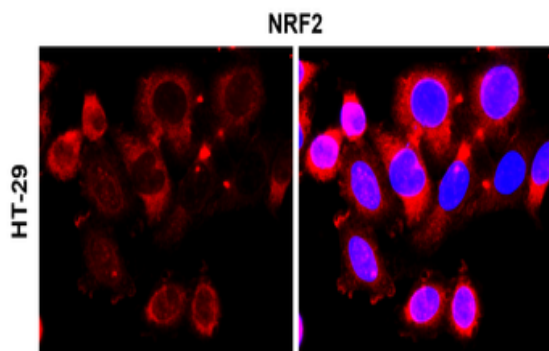
Phone: [+1 \(415\) 906-5211](tel:+1(415)906-5211) | Fax: [+1 \(415\) 651-8558](tel:+1(415)651-8558)

**Expiration Date** 12 months from date of receipt.

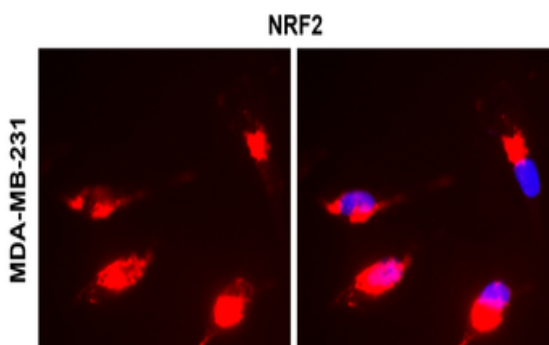
**Nrf2 as a Potential Mediator in Metabolic Diseases**



Anti-NRF2 antibody at 1/800 dilution. Lysates at 30 µg per lane. This blot was produced using a 5% SDS-PAGE. NC membrane was then blocked for an hour before being incubated with orb1294327 overnight at 4°C.



Immunofluorescence: cells were fixed with 4% paraformaldehyde for 10 min at RT, permeabilized with 0.1% NP-40 for 10 min at RT then blocked with 5% BSA for 30 min at room temperature. Cells were stained with orb1294327 anti-NRF2 antibody (red) at 1:200 and 4°C. DAPI (blue) was used as the nuclear counter stain.



Immunofluorescence: cells were fixed with 4% paraformaldehyde for 10 min at RT, permeabilized with 0.1% NP-40 for 10 min at RT then blocked with 5% BSA for 30 min at room temperature. Cells were stained with orb1294327 anti-NRF2 antibody (red) at 1:200 and 4°C. DAPI (blue) was used as the nuclear counter stain.

**Biorbyt Ltd.**

7 Signet Court, Swann Road  
Cambridge  
CB5 8LA  
United Kingdom

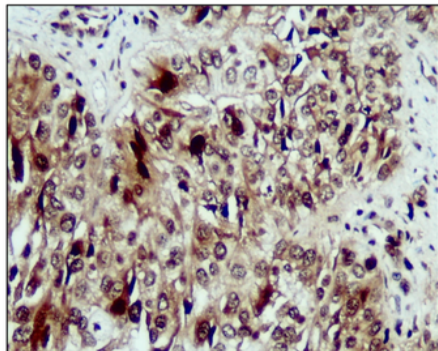
Email: [info@biorbyt.com](mailto:info@biorbyt.com), [support@biorbyt.com](mailto:support@biorbyt.com)  
Phone: +44 (0)1223 859353 | Fax: +1 (415) 651-8558

**Biorbyt LLC**

68 TW Alexander Drive  
Research Triangle Park  
Durham  
NC 27713  
United States

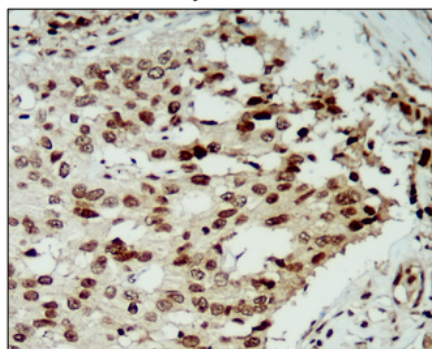
Email: [info@biorbyt.com](mailto:info@biorbyt.com), [support@biorbyt.com](mailto:support@biorbyt.com)  
Phone: +1 (415) 906-5211 | Fax: +1 (415) 651-8558

Breast carcinoma



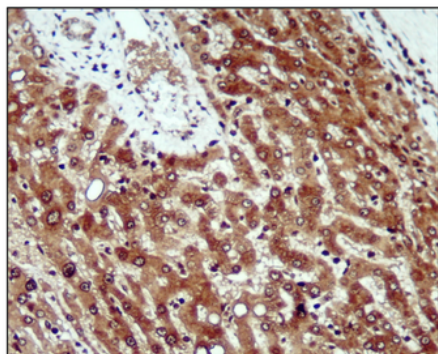
Immunohistochemical analysis of paraffin embedded Human cancer tissue labeling NRF2 with orb1294327 at 1/150.

Kidney carcinoma



Immunohistochemical analysis of paraffin embedded Human cancer tissue labeling NRF2 with orb1294327 at 1/150.

Liver carcinoma



Immunohistochemical analysis of paraffin embedded Human cancer tissue labeling NRF2 with orb1294327 at 1/150.

**Biorbyt Ltd.**

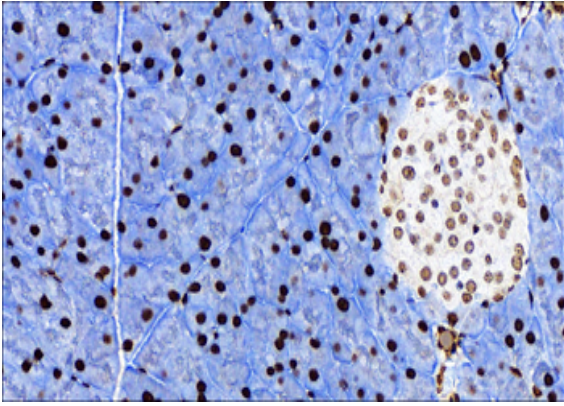
7 Signet Court, Swann Road  
Cambridge  
CB5 8LA  
United Kingdom

Email: [info@biorbyt.com](mailto:info@biorbyt.com), [support@biorbyt.com](mailto:support@biorbyt.com)  
Phone: +44 (0)1223 859353 | Fax: +1 (415) 651-8558

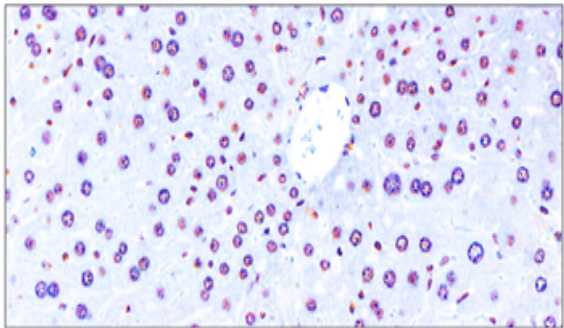
**Biorbyt LLC**

68 TW Alexander Drive  
Research Triangle Park  
Durham  
NC 27713  
United States

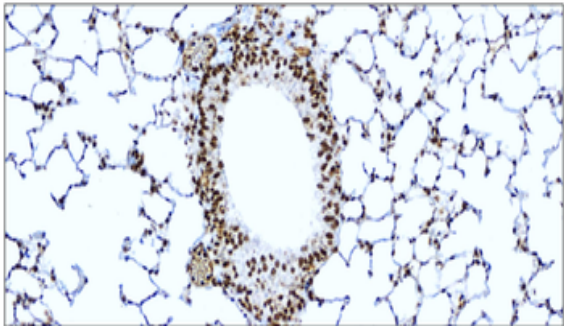
Email: [info@biorbyt.com](mailto:info@biorbyt.com), [support@biorbyt.com](mailto:support@biorbyt.com)  
Phone: +1 (415) 906-5211 | Fax: +1 (415) 651-8558



Immunohistochemical analysis of paraffin embedded mouse kidney tissue labeling NRF2 with orb1294327 at 1/100 RT 1hr. Epitope Retrieval methods: Citrate Buffer, pH 6.0.



Immunohistochemical analysis of paraffin embedded mouse liver labeling NRF2 with orb1294327 at 1/200 RT 1hr. Epitope Retrieval methods: Citrate Buffer, pH 6.0.



Immunohistochemical analysis of paraffin embedded mouse lung labeling NRF2 with orb1294327 at 1/200 RT 1hr. Epitope Retrieval methods: Citrate Buffer, pH 6.0.

**Biorbyt Ltd.**

7 Signet Court, Swann Road  
Cambridge  
CB5 8LA  
United Kingdom

Email: [info@biorbyt.com](mailto:info@biorbyt.com), [support@biorbyt.com](mailto:support@biorbyt.com)

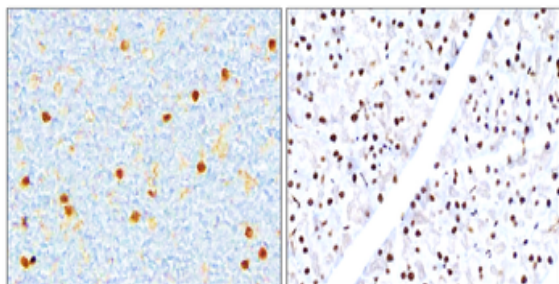
Phone: +44 (0)1223 859353 | Fax: +1 (415) 651-8558

**Biorbyt LLC**

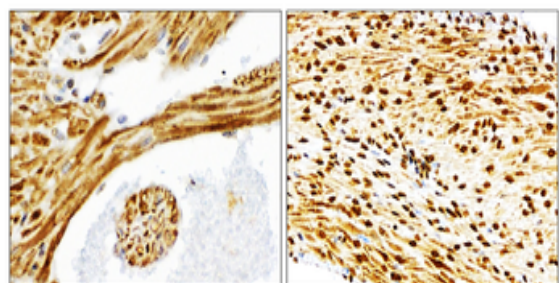
68 TW Alexander Drive  
Research Triangle Park  
Durham  
NC 27713  
United States

Email: [info@biorbyt.com](mailto:info@biorbyt.com), [support@biorbyt.com](mailto:support@biorbyt.com)

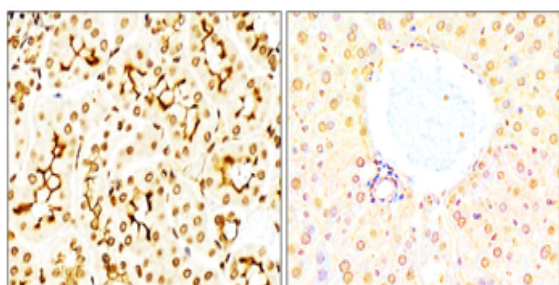
Phone: +1 (415) 906-5211 | Fax: +1 (415) 651-8558



Immunohistochemical analysis of paraffin embedded mouse tissue labeling NRF2 with orb1294327 at 1/100 RT 1hr. Epitope Retrieval methods: Citrate Buffer, pH 6.0.



Immunohistochemical analysis of paraffin embedded mouse tissue labeling NRF2 with orb1294327 at 1/100 RT 1hr. Epitope Retrieval methods: Citrate Buffer, pH 6.0.



Immunohistochemical analysis of paraffin embedded mouse tissue labeling NRF2 with orb1294327 at 1/100 RT 1hr. Epitope Retrieval methods: Citrate Buffer, pH 6.0.

**Biorbyt Ltd.**

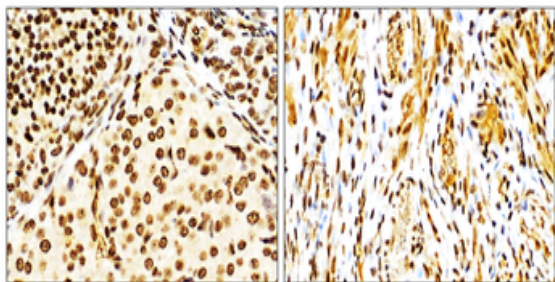
7 Signet Court, Swann Road  
Cambridge  
CB5 8LA  
United Kingdom

Email: [info@biorbyt.com](mailto:info@biorbyt.com), [support@biorbyt.com](mailto:support@biorbyt.com)  
Phone: [+44 \(0\)1223 859353](tel:+44(0)1223859353) | Fax: [+1 \(415\) 651-8558](tel:+1(415)651-8558)

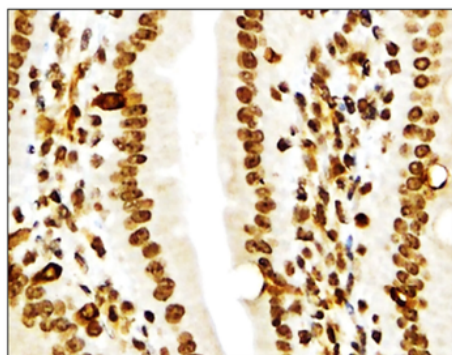
**Biorbyt LLC**

68 TW Alexander Drive  
Research Triangle Park  
Durham  
NC 27713  
United States

Email: [info@biorbyt.com](mailto:info@biorbyt.com), [support@biorbyt.com](mailto:support@biorbyt.com)  
Phone: [+1 \(415\) 906-5211](tel:+1(415)906-5211) | Fax: [+1 \(415\) 651-8558](tel:+1(415)651-8558)



Immunohistochemical analysis of paraffin embedded mouse tissue labeling NRF2 with orb1294327 at 1/100 RT 1hr. Epitope Retrieval methods: Citrate Buffer, pH 6.0.



Immunohistochemical analysis of paraffin embedded mouse tissue labeling NRF2 with orb1294327 at 1/100 RT 1hr. Epitope Retrieval methods: Citrate Buffer, pH 6.0.

**Biorbyt Ltd.**

7 Signet Court, Swann Road  
Cambridge  
CB5 8LA  
United Kingdom

Email: [info@biorbyt.com](mailto:info@biorbyt.com), [support@biorbyt.com](mailto:support@biorbyt.com)

Phone: [+44 \(0\)1223 859353](tel:+44(0)1223859353) | Fax: [+1 \(415\) 651-8558](tel:+1(415)651-8558)

**Biorbyt LLC**

68 TW Alexander Drive  
Research Triangle Park  
Durham  
NC 27713  
United States

Email: [info@biorbyt.com](mailto:info@biorbyt.com), [support@biorbyt.com](mailto:support@biorbyt.com)

Phone: [+1 \(415\) 906-5211](tel:+1(415)906-5211) | Fax: [+1 \(415\) 651-8558](tel:+1(415)651-8558)