

Product Datasheet

ESR1 Rabbit Polyclonal Antibody (orb1294314)

Catalog Number	orb1294314
Category	Antibodies
Description	Rabbit polyclonal antibody to Estrogen Receptor alpha
Target	ESR1 / Estrogen receptor alpha
Clonality	Polyclonal
Species/Host	Rabbit
Isotype	Rabbit-IgG
Conjugation	Unconjugated
Reactivity	Human, Mouse, Rat
Buffer/Preservatives	100mM Tris Glycine, 20% Glycerol (pH7). 0.025% ProClin 300 was added as a preservative
Immunogen	Synthetic peptide / Extracellular domain corresponding to Human Estrogen Receptor alpha
Tested applications	IHC, WB
Dilution range	Western Blot 1:500-1:1000, Immunofluorescence 1:100-1:200, Immunohistochemistry (Paraffin) 1:200 - 1:250
Antibody Type	Primary Antibody
Storage	Maintain refrigerated at 2-8°C for up to 2 weeks. For long term storage store at -20°C in small aliquots to prevent freeze-thaw cycles.
Note	For research use only

Biorbyt Ltd.

7 Signet Court, Swann Road
Cambridge
CB5 8LA
United Kingdom

Email: info@biorbyt.com, support@biorbyt.com

Phone: [+44 \(0\)1223 859353](tel:+44(0)1223859353) | Fax: [+1 \(415\) 651-8558](tel:+1(415)651-8558)

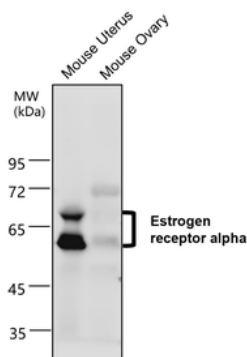
Biorbyt LLC

68 TW Alexander Drive
Research Triangle Park
Durham
NC 27713-2847
United States

Email: info@biorbyt.com, support@biorbyt.com

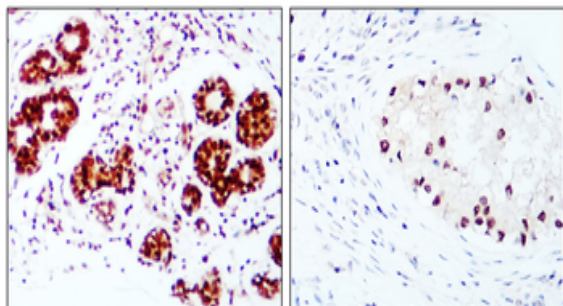
Phone: [+1 \(415\) 906-5211](tel:+1(415)906-5211) | Fax: [+1 \(415\) 651-8558](tel:+1(415)651-8558)

Expiration Date 12 months from date of receipt.



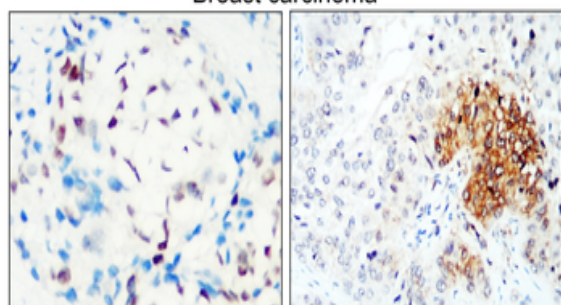
Estrogen Receptor alpha antibody at 1/800 dilution, Lysates at 60 µg per lane, This blot was produced using a 10% SDS-PAGE. Nitrocellulose membrane was then blocked for an hour before being incubated with orb1294314 overnight at 4°C.

Breast carcinoma



Immunohistochemical analysis of paraffin embedded Human cancer tissue labeling Estrogen Receptor alpha with orb1294314 at 1/200.

Breast carcinoma



Immunohistochemical analysis of paraffin embedded Human cancer tissue labeling Estrogen Receptor alpha with orb1294314 at 1/200.

Biorbyt Ltd.

7 Signet Court, Swann Road
Cambridge
CB5 8LA
United Kingdom

Email: info@biorbyt.com, support@biorbyt.com

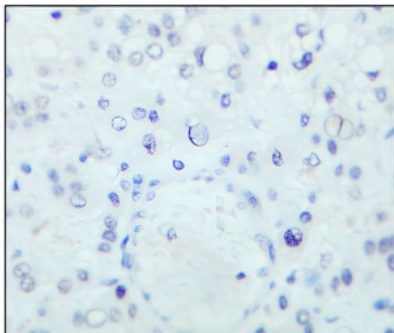
Phone: +44 (0)1223 859353 | Fax: +1 (415) 651-8558

Biorbyt LLC

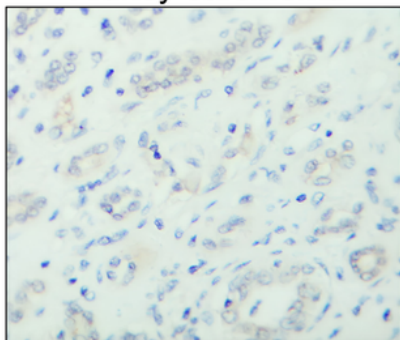
68 TW Alexander Drive
Research Triangle Park
Durham
NC 27713-2847
United States

Email: info@biorbyt.com, support@biorbyt.com

Phone: +1 (415) 906-5211 | Fax: +1 (415) 651-8558

Liver carcinoma

Immunohistochemical analysis of paraffin embedded Human cancer tissue labeling Estrogen Receptor alpha with orb1294314 at 1/200.

Kidney carcinoma

Immunohistochemical analysis of paraffin embedded Human cancer tissue labeling Estrogen Receptor alpha with orb1294314 at 1/200.

Biorbyt Ltd.

7 Signet Court, Swann Road
Cambridge
CB5 8LA
United Kingdom

Email: info@biorbyt.com, support@biorbyt.com

Phone: [+44 \(0\)1223 859353](tel:+44(0)1223859353) | Fax: [+1 \(415\) 651-8558](tel:+1(415)651-8558)

Biorbyt LLC

68 TW Alexander Drive
Research Triangle Park
Durham
NC 27713-2847
United States

Email: info@biorbyt.com, support@biorbyt.com

Phone: [+1 \(415\) 906-5211](tel:+1(415)906-5211) | Fax: [+1 \(415\) 651-8558](tel:+1(415)651-8558)