

Product Datasheet

EpCAM Rabbit Polyclonal Antibody (orb1294311)

Catalog Number	orb1294311
Category	Antibodies
Description	Rabbit polyclonal antibody to EpCAM antibody (Extracellular domain)
Target	EpCAM / CD326 (Extracellular domain)
Clonality	Polyclonal
Species/Host	Rabbit
Isotype	Rabbit-IgG
Conjugation	Unconjugated
Reactivity	Human, Mouse
Buffer/Preservatives	100mM Tris Glycine, 20% Glycerol (pH7). 0.025% ProClin 300 was added as a preservative
Immunogen	Synthetic peptide / Extracellular domain corresponding to Human EpCAM
Tested applications	FC, IF, IHC, WB
Dilution range	Western Blot 1:1000-1:2000, Immunofluorescence 1:200-1:400, Immunohistochemistry (Paraffin) 1:100-1:150, Flow Cytometry 1:50-1:200
Antibody Type	Primary Antibody
Storage	Maintain refrigerated at 2-8°C for up to 2 weeks. For long term storage store at -20°C in small aliquots to prevent freeze-thaw cycles.
Note	For research use only

Biorbyt Ltd.

7 Signet Court, Swann Road
Cambridge
CB5 8LA
United Kingdom

Email: info@biorbyt.com, support@biorbyt.com

Phone: [+44 \(0\)1223 859353](tel:+44(0)1223859353) | Fax: [+1 \(415\) 651-8558](tel:+1(415)651-8558)

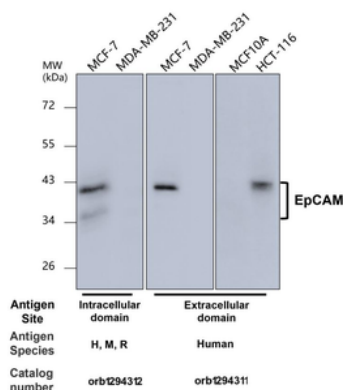
Biorbyt LLC

68 TW Alexander Drive
Research Triangle Park
Durham
NC 27713
United States

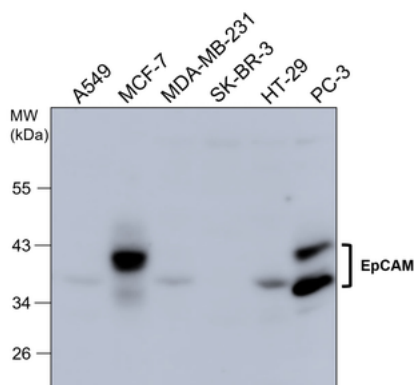
Email: info@biorbyt.com, support@biorbyt.com

Phone: [+1 \(415\) 906-5211](tel:+1(415)906-5211) | Fax: [+1 \(415\) 651-8558](tel:+1(415)651-8558)

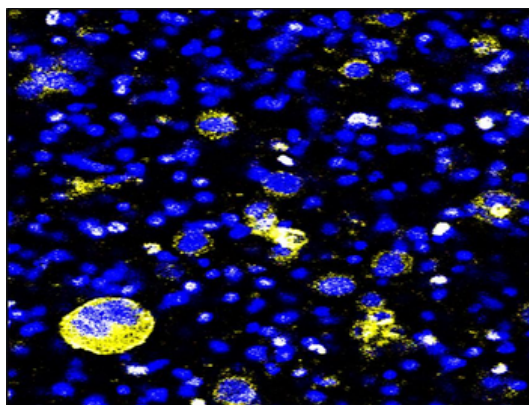
Expiration Date 12 months from date of receipt.



Anti-EpCAM antibody - at 1/1000 dilution, Lysates at 40 µg per lane. This blot was produced using a 10% SDS-PAGE. Nitrocellulose membrane was then blocked for an hour before being incubated with orb1294311 overnight at 4°C.



Anti-EpCAM antibody - at 1/1000 dilution, Lysates at 40 µg per lane. This blot was produced using a 10% SDS-PAGE. Nitrocellulose membrane was then blocked for an hour before being incubated with orb1294311 overnight at 4°C.



Application: Immunocytochemistry (ICC), Sample: Mixture cell, Antibody: EpCAM antibody (extracellular domain) (orb1294311).

Biorbyt Ltd.

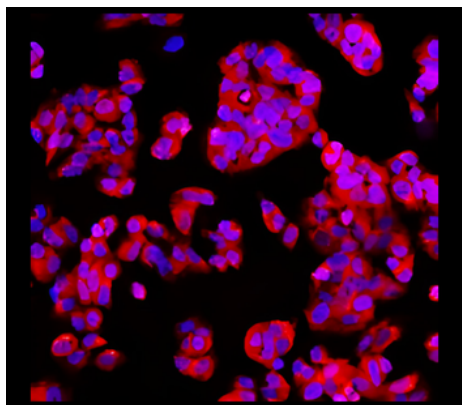
7 Signet Court, Swann Road
Cambridge
CB5 8LA
United Kingdom

Email: info@biorbyt.com, support@biorbyt.com
Phone: +44 (0)1223 859353 | Fax: +1 (415) 651-8558

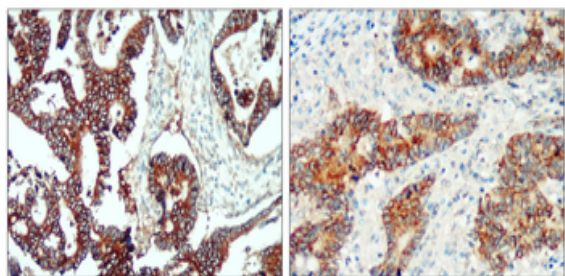
Biorbyt LLC

68 TW Alexander Drive
Research Triangle Park
Durham
NC 27713
United States

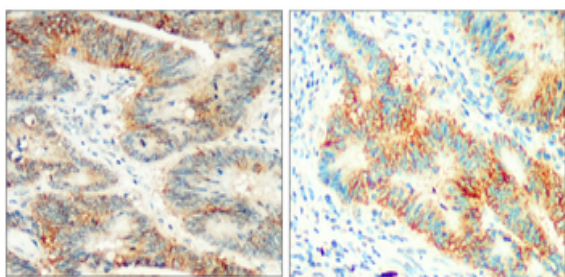
Email: info@biorbyt.com, support@biorbyt.com
Phone: +1 (415) 906-5211 | Fax: +1 (415) 651-8558



Cell: MCF-7 (DAPI: 1-300, Phalloidin: 1-300), EpCAM, (orb1294311): 1-200, Anti-rabbit 594: 1-500, NikonEpi-fluorescence (A-ken) 60x.



Immunohistochemical analysis of paraffin embedded human cancer tissue labeling EpCAM with orb1294311 at 1/200 RT 1hr.



Immunohistochemical analysis of paraffin embedded human cancer tissue labeling EpCAM with orb1294311 at 1/200 RT 1hr.

Biorbyt Ltd.

7 Signet Court, Swann Road
Cambridge
CB5 8LA
United Kingdom

Email: info@biorbyt.com, support@biorbyt.com

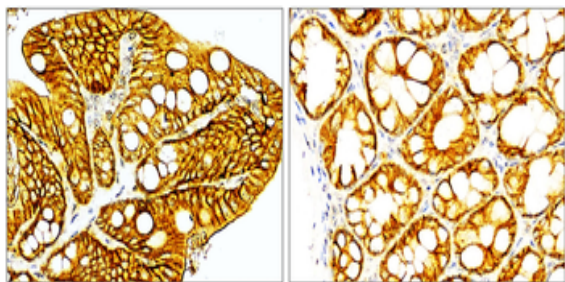
Phone: [+44 \(0\)1223 859353](tel:+44(0)1223859353) | Fax: [+1 \(415\) 651-8558](tel:+1(415)651-8558)

Biorbyt LLC

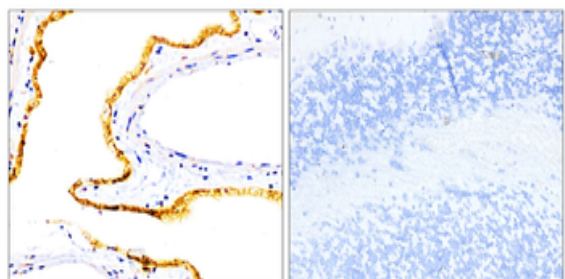
68 TW Alexander Drive
Research Triangle Park
Durham
NC 27713
United States

Email: info@biorbyt.com, support@biorbyt.com

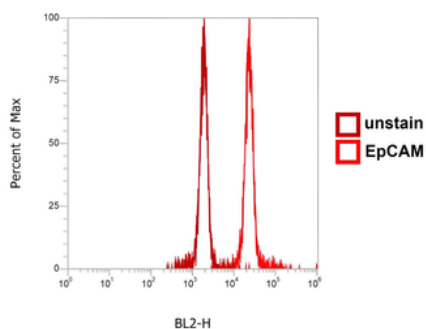
Phone: [+1 \(415\) 906-5211](tel:+1(415)906-5211) | Fax: [+1 \(415\) 651-8558](tel:+1(415)651-8558)



Immunohistochemical analysis of paraffin embedded mouse tissue labeling EpCAM with orb1294311 at 1/200 RT 1hr.
Epitope Retrieval methods: Citrate Buffer, pH 6.0.



Immunohistochemical analysis of paraffin embedded mouse tissue labeling EpCAM with orb1294311 at 1/200 RT 1hr.
Epitope Retrieval methods: Citrate Buffer, pH 6.0.



EpCAM antibody, orb1294311, Cell: MCF-7.

Biorbyt Ltd.

7 Signet Court, Swann Road
Cambridge
CB5 8LA
United Kingdom

Email: info@biorbyt.com, support@biorbyt.com

Phone: [+44 \(0\)1223 859353](tel:+44(0)1223859353) | Fax: [+1 \(415\) 651-8558](tel:+1(415)651-8558)

Biorbyt LLC

68 TW Alexander Drive
Research Triangle Park
Durham
NC 27713
United States

Email: info@biorbyt.com, support@biorbyt.com

Phone: [+1 \(415\) 906-5211](tel:+1(415)906-5211) | Fax: [+1 \(415\) 651-8558](tel:+1(415)651-8558)