

Product Datasheet

Pan-Cytokeratin Rabbit Polyclonal Antibody (orb1294309)

Catalog Number	orb1294309
Category	Antibodies
Description	Rabbit polyclonal antibody to pan Cytokeratin
Target	Pan-Cytokeratin
Clonality	Polyclonal
Species/Host	Rabbit
Isotype	Rabbit-IgG
Conjugation	Unconjugated
Reactivity	Human, Mouse
Buffer/Preservatives	PBS (pH 7.4), 40% Glycerol. 0.025% ProClin 300 was added as a preservative
Immunogen	Detects endogenous levels of total keratin 5, 6, 7, 8, 14, 17, 18, 19 and 20. The antibody does not cross-react with other keratins.
Tested applications	FC, IF, IHC, WB
Dilution range	Western Blot 1:2000-1:5000, Immunofluorescence 1:400-1:800, Immunohistochemistry (Paraffin) 1:400-1:800, Flow Cytometry 1:300-1:500
Antibody Type	Primary Antibody
Storage	Maintain refrigerated at 2-8°C for up to 2 weeks. For long term storage store at -20°C in small aliquots to prevent freeze-thaw cycles.

Biorbyt Ltd.

7 Signet Court, Swann Road
Cambridge
CB5 8LA
United Kingdom

Email: info@biorbyt.com, support@biorbyt.com

Phone: [+44 \(0\)1223 859353](tel:+44(0)1223859353) | Fax: [+1 \(415\) 651-8558](tel:+1(415)651-8558)

Biorbyt LLC

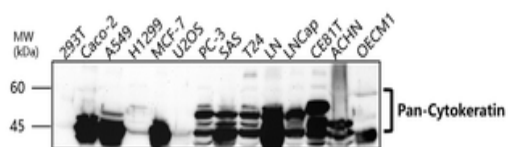
68 TW Alexander Drive
Research Triangle Park
Durham
NC 27713
United States

Email: info@biorbyt.com, support@biorbyt.com

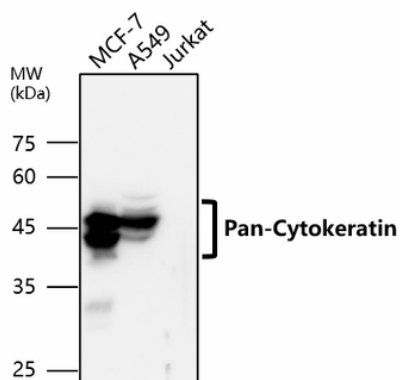
Phone: [+1 \(415\) 906-5211](tel:+1(415)906-5211) | Fax: [+1 \(415\) 651-8558](tel:+1(415)651-8558)

Note For research use only

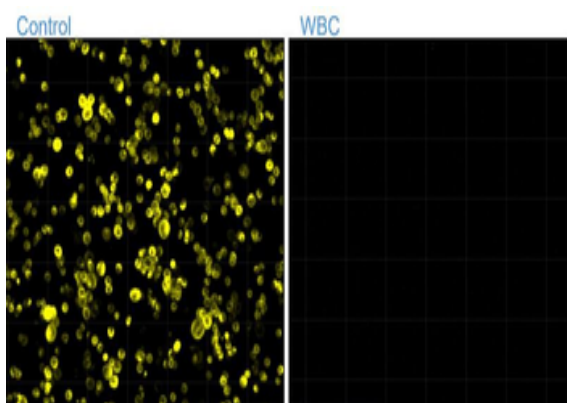
Expiration Date 12 months from date of receipt.



Anti-pan Cytokeratin antibody - at 1/3000 dilution, Lysates at 45 µg per lane, This blot was produced using a 10% SDS-PAGE. Nitrocellulose membrane was then blocked an hour before being incubated with orb1294309 overnight at 4°C.



Anti-pan Cytokeratin antibody - at 1/3000 dilution.



Application: Immunocytochemistry (ICC), Sample: CTC (Circulating Tumor Cell), Antibody: Pan-Cytokeratin antibody (orb1294309).

Biorbyt Ltd.

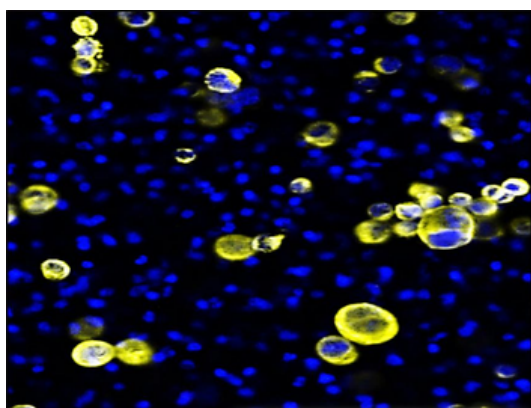
7 Signet Court, Swann Road
Cambridge
CB5 8LA
United Kingdom

Email: info@biorbyt.com, support@biorbyt.com
Phone: +44 (0)1223 859353 | Fax: +1 (415) 651-8558

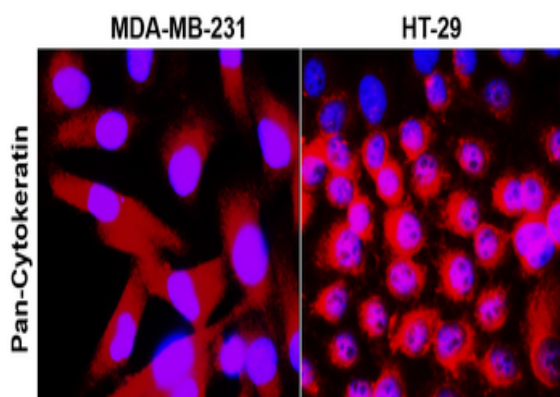
Biorbyt LLC

68 TW Alexander Drive
Research Triangle Park
Durham
NC 27713
United States

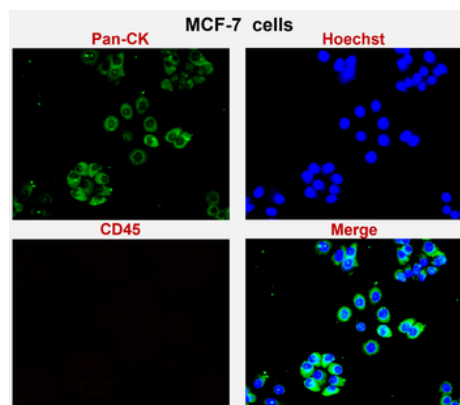
Email: info@biorbyt.com, support@biorbyt.com
Phone: +1 (415) 906-5211 | Fax: +1 (415) 651-8558



Application: Immunocytochemistry (ICC), Sample: Mixture cell, Antibody: Pan-Cytokeratin antibody (orb1294309).



Cells were fixed with 4% PFA for 10 min at RT, permeabilized with 0.1% NP-40 for 10 min at RT then blocked with 5% BSA for 30 min at room temperature. Cells were stained with orb1294309 anti-pan Cytokeratin0 antibody (red) at 1:300 and 4°C.



Immunofluorescence: cells were fixed with 4% paraformaldehyde for 10 min at RT, permeabilized with 0.1% NP-40 for 10 min at RT then blocked with 5% BSA for 30 min at room temperature. Cells were stained with orb1294309 anti-pan Cytokeratin antibody (green) at 1:400 and 4°C. DAPI (blue) was used as the nuclear counter stain.

Biorbyt Ltd.

7 Signet Court, Swann Road
Cambridge
CB5 8LA
United Kingdom

Email: info@biorbyt.com, support@biorbyt.com

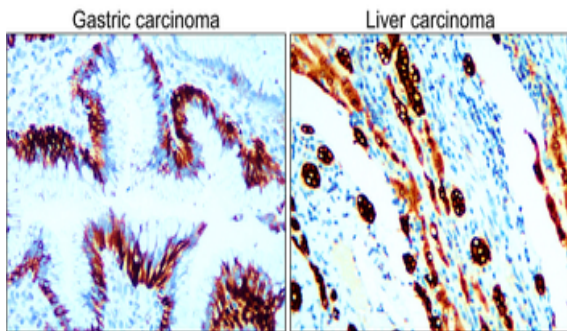
Phone: +44 (0)1223 859353 | Fax: +1 (415) 651-8558

Biorbyt LLC

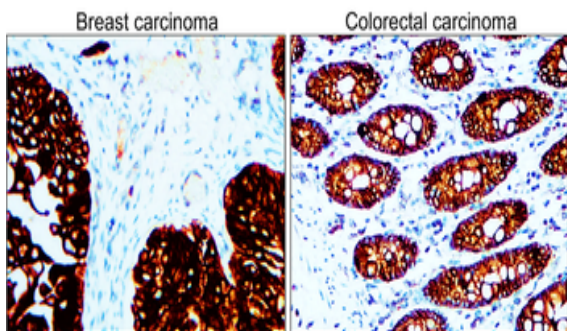
68 TW Alexander Drive
Research Triangle Park
Durham
NC 27713
United States

Email: info@biorbyt.com, support@biorbyt.com

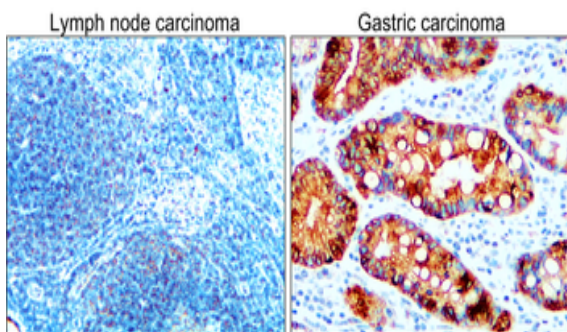
Phone: +1 (415) 906-5211 | Fax: +1 (415) 651-8558



Immunohistochemical analysis of paraffin embedded Human cancer tissue labeling pan Cytokeratin with orb1294309 at 1/400.



Immunohistochemical analysis of paraffin embedded Human cancer tissue labeling pan Cytokeratin with orb1294309 at 1/400.



Immunohistochemical analysis of paraffin embedded Human cancer tissue labeling pan Cytokeratin with orb1294309 at 1/400.

Biorbyt Ltd.

7 Signet Court, Swann Road
Cambridge
CB5 8LA
United Kingdom

Email: info@biorbyt.com, support@biorbyt.com

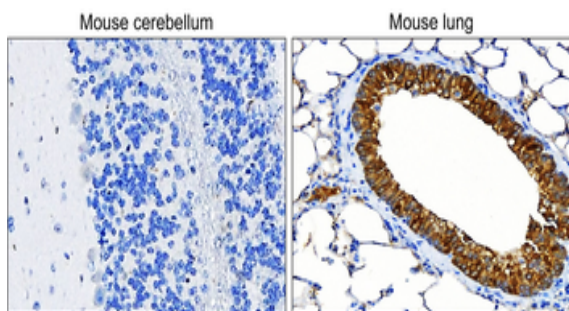
Phone: +44 (0)1223 859353 | Fax: +1 (415) 651-8558

Biorbyt LLC

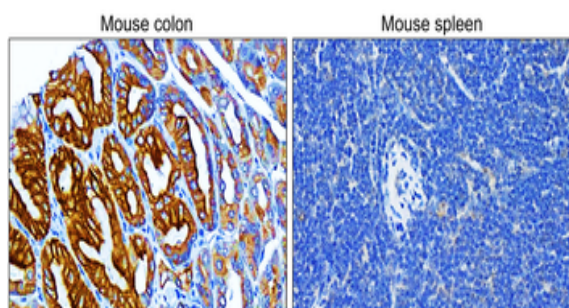
68 TW Alexander Drive
Research Triangle Park
Durham
NC 27713
United States

Email: info@biorbyt.com, support@biorbyt.com

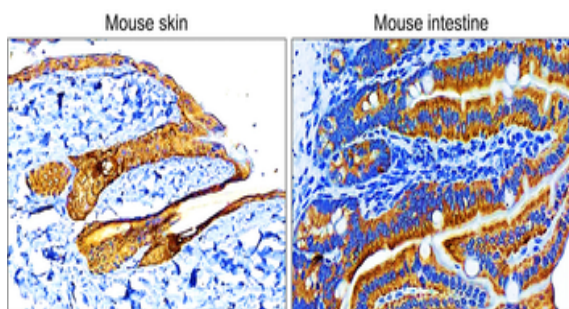
Phone: +1 (415) 906-5211 | Fax: +1 (415) 651-8558



Immunohistochemical analysis of paraffin embedded Mouse tissue labeling pan Cytokeratin with orb1294309 at 1/400.



Immunohistochemical analysis of paraffin embedded Mouse tissue labeling pan Cytokeratin with orb1294309 at 1/400.



Immunohistochemical analysis of paraffin embedded Mouse tissue labeling pan Cytokeratin with orb1294309 at 1/400.

Biorbyt Ltd.

7 Signet Court, Swann Road
Cambridge
CB5 8LA
United Kingdom

Email: info@biorbyt.com, support@biorbyt.com

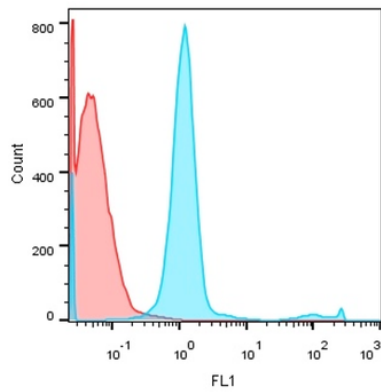
Phone: +44 (0)1223 859353 | Fax: +1 (415) 651-8558

Biorbyt LLC

68 TW Alexander Drive
Research Triangle Park
Durham
NC 27713
United States

Email: info@biorbyt.com, support@biorbyt.com

Phone: +1 (415) 906-5211 | Fax: +1 (415) 651-8558



pan Cytokeratin antibody, orb1294309, Cell: MCF-7, pan Cytokeratin (orb1294309): 1-350.

Biorbyt Ltd.

7 Signet Court, Swann Road
Cambridge
CB5 8LA
United Kingdom

Email: info@biorbyt.com, support@biorbyt.com

Phone: [+44 \(0\)1223 859353](tel:+44(0)1223859353) | Fax: [+1 \(415\) 651-8558](tel:+1(415)651-8558)

Biorbyt LLC

68 TW Alexander Drive
Research Triangle Park
Durham
NC 27713
United States

Email: info@biorbyt.com, support@biorbyt.com

Phone: [+1 \(415\) 906-5211](tel:+1(415)906-5211) | Fax: [+1 \(415\) 651-8558](tel:+1(415)651-8558)