

Product Datasheet

Toll-like Receptor 4 Rabbit Polyclonal Antibody (orb1294286)

Catalog Number	orb1294286
Category	Antibodies
Description	Rabbit polyclonal antibody to Toll-like Receptor 4
Target	Toll-like Receptor 4 / TLR4
Clonality	Polyclonal
Species/Host	Rabbit
Isotype	Rabbit-IgG
Conjugation	Unconjugated
Reactivity	Human, Mouse, Rat
Buffer/Preservatives	100mM Tris Glycine, 20% Glycerol (pH7). 0.025% ProClin 300 was added as a preservative
Immunogen	Synthetic peptide / Intracellular domain corresponding to Human Toll-like Receptor 4 / TLR4
Tested applications	IF, IHC, WB
Dilution range	Western Blot 1:500–1:2000, Immunofluorescence 1:300–1:500, Immunohistochemistry (Paraffin) 1:200–1:300
Antibody Type	Primary Antibody
Storage	Maintain refrigerated at 2-8°C for up to 2 weeks. For long term storage store at -20°C in small aliquots to prevent freeze-thaw cycles.

Biorbyt Ltd.

7 Signet Court, Swann Road
Cambridge
CB5 8LA
United Kingdom

Email: info@biorbyt.com, support@biorbyt.com

Phone: [+44 \(0\)1223 859353](tel:+44(0)1223859353) | Fax: [+1 \(415\) 651-8558](tel:+1(415)651-8558)

Biorbyt LLC

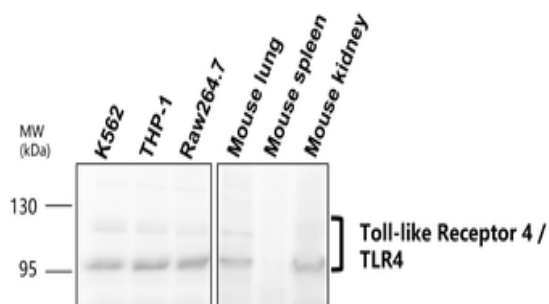
68 TW Alexander Drive
Research Triangle Park
Durham
NC 27713-2847
United States

Email: info@biorbyt.com, support@biorbyt.com

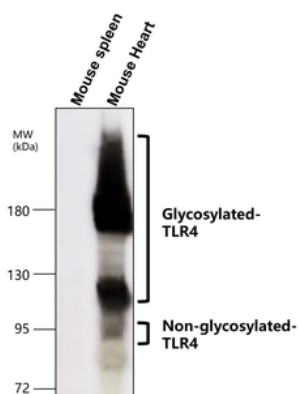
Phone: [+1 \(415\) 906-5211](tel:+1(415)906-5211) | Fax: [+1 \(415\) 651-8558](tel:+1(415)651-8558)

Note For research use only

Expiration Date 12 months from date of receipt.

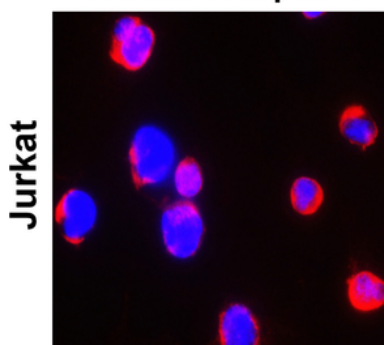


All lanes: anti-Toll-like Receptor 4 antibody at 1/1000 dilution, Lysates/proteins at 60 µg per lane. This blot was produced using a 5% SDS-PAGE. The gel was run at 140V for 50 minutes before being transferred onto a Nitrocellulose membrane at 18V for 60 minutes. The membrane was then blocked for an hour before being incubated with orb1294286 overnight at 4°C.



All lanes: anti-Toll-like Receptor 4 antibody at 1/1000 dilution, Lysates/proteins at 60 µg per lane. This blot was produced using a 5% SDS-PAGE. The gel was run at 140V for 50 minutes before being transferred onto a Nitrocellulose membrane at 18V for 60 minutes. The membrane was then blocked for an hour before being incubated with orb1294286 overnight at 4°C.

Toll like receptor 4



Immunofluorescence: cells were fixed with 4% paraformaldehyde for 10 min at RT, permeabilized with 0.1% NP-40 for 10 min at RT then blocked with 5% BSA for 30 min at room temperature. Cells were stained with orb1294286 anti-Toll-like Receptor 4 antibody (red) at 1:400 and 4°C. DAPI (blue) was used as the nuclear counter stain.

Biorbyt Ltd.

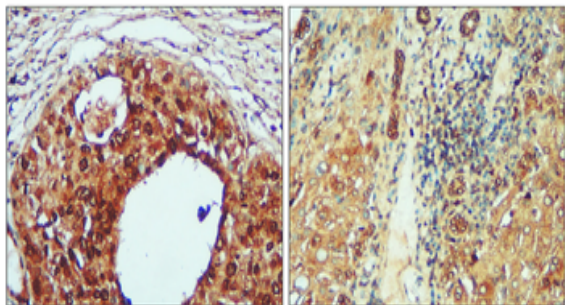
7 Signet Court, Swann Road
Cambridge
CB5 8LA
United Kingdom

Email: info@biorbyt.com, support@biorbyt.com
Phone: +44 (0)1223 859353 | Fax: +1 (415) 651-8558

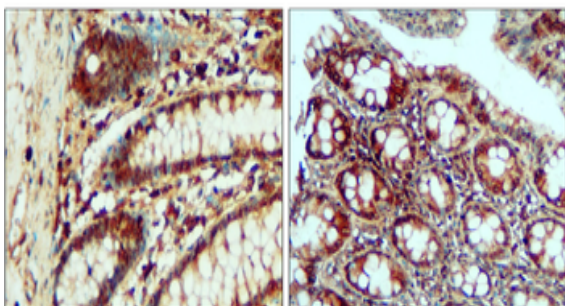
Biorbyt LLC

68 TW Alexander Drive
Research Triangle Park
Durham
NC 27713-2847
United States

Email: info@biorbyt.com, support@biorbyt.com
Phone: +1 (415) 906-5211 | Fax: +1 (415) 651-8558



Immunohistochemical analysis of paraffin embedded Human cancer tissue labeling Toll-like Receptor 4 with orb1294286 at 1/200.



Immunohistochemical analysis of paraffin embedded Human cancer tissue labeling Toll-like Receptor 4 with orb1294286 at 1/200.

Biorbyt Ltd.

7 Signet Court, Swann Road

Cambridge

CB5 8LA

United Kingdom

Email: info@biorbyt.com, support@biorbyt.comPhone: [+44 \(0\)1223 859353](tel:+44(0)1223859353) | Fax: [+1 \(415\) 651-8558](tel:+1(415)651-8558)**Biorbyt LLC**

68 TW Alexander Drive

Research Triangle Park

Durham

NC 27713-2847

United States

Email: info@biorbyt.com, support@biorbyt.comPhone: [+1 \(415\) 906-5211](tel:+1(415)906-5211) | Fax: [+1 \(415\) 651-8558](tel:+1(415)651-8558)