

Product Datasheet

PD-L1 Rabbit Polyclonal Antibody (orb1294268)

Catalog Number	orb1294268
Category	Antibodies
Description	Rabbit polyclonal antibody to PD L1
Target	PD-L1 / CD274 Intracellular domain (IHC prefer)
Clonality	Polyclonal
Species/Host	Rabbit
Isotype	Rabbit-IgG
Conjugation	Unconjugated
Reactivity	Human
Buffer/Preservatives	100mM Tris Glycine, 50% Glycerol (pH7). 0.025% ProClin 300 was added as a preservative
Immunogen	Synthetic peptide / Intracellular domain corresponding to Human PD-L1 / CD274
Tested applications	IF, IHC, IP, WB
Dilution range	Western Blot & Immunoprecipitation: Reported in the literature, not verified in house., Immunofluorescence 1:100-1:300, Immunohistochemistry (Paraffin) 1:100-1:250
Antibody Type	Primary Antibody
Storage	Maintain refrigerated at 2-8°C for up to 2 weeks. For long term storage store at -20°C in small aliquots to prevent freeze-thaw cycles.
Note	For research use only

Biorbyt Ltd.

7 Signet Court, Swann Road
Cambridge
CB5 8LA
United Kingdom

Email: info@biorbyt.com, support@biorbyt.com

Phone: [+44 \(0\)1223 859353](tel:+44(0)1223859353) | Fax: [+1 \(415\) 651-8558](tel:+1(415)651-8558)

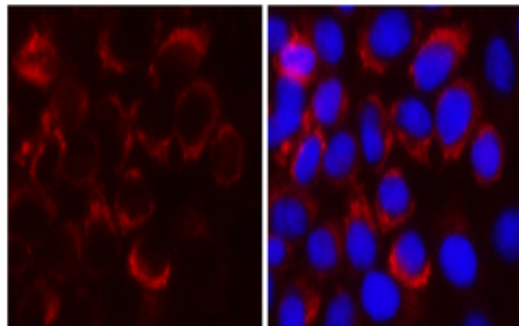
Biorbyt LLC

68 TW Alexander Drive
Research Triangle Park
Durham
NC 27713
United States

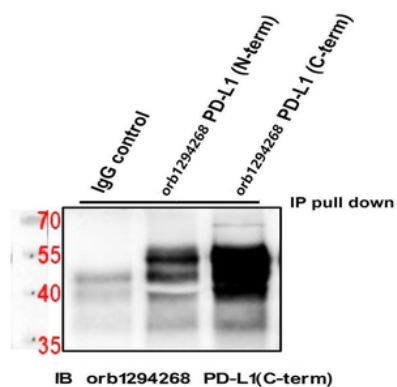
Email: info@biorbyt.com, support@biorbyt.com

Phone: [+1 \(415\) 906-5211](tel:+1(415)906-5211) | Fax: [+1 \(415\) 651-8558](tel:+1(415)651-8558)

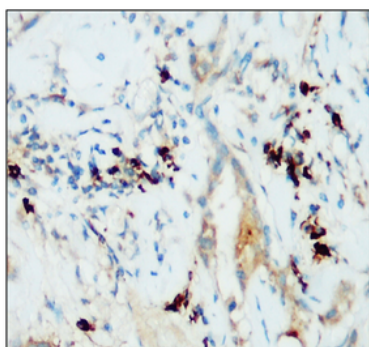
Expiration Date 12 months from date of receipt.

PD-L1

Cells were fixed with 4% PFA for 10 min at RT, permeabilized with 0.1% NP-40 for 10 min at RT then blocked with 5% BSA for 30 min at RT. stained with orb1294268 anti-PD-L1 / CD274 antibody (red) at 1:200 and 4°C.



Cell: MDA-MB-231 1Ab: orb1294268 1-500 2Ab: anti Rabbit IgG (Light chain) 1-3000.

Human Breast Carcinoma

Immunohistochemical analysis of paraffin embedded Human breast cancer tissue labeling PD-L1 / CD274 with orb1294268 at 1/150.

Biorbyt Ltd.

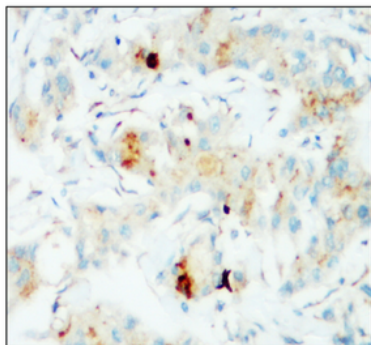
7 Signet Court, Swann Road
Cambridge
CB5 8LA
United Kingdom

Email: info@biorbyt.com, support@biorbyt.com
Phone: +44 (0)1223 859353 | Fax: +1 (415) 651-8558

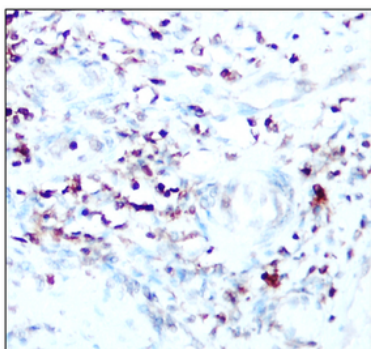
Biorbyt LLC

68 TW Alexander Drive
Research Triangle Park
Durham
NC 27713
United States

Email: info@biorbyt.com, support@biorbyt.com
Phone: +1 (415) 906-5211 | Fax: +1 (415) 651-8558

Human Breast Carcinoma

Immunohistochemical analysis of paraffin embedded Human breast cancer tissue labeling PD-L1 / CD274 with orb1294268 at 1/150.

Human Breast Carcinoma

Immunohistochemical analysis of paraffin embedded Human breast cancer tissue labeling PD-L1 / CD274 with orb1294268 at 1/150.

Biorbyt Ltd.

7 Signet Court, Swann Road
Cambridge
CB5 8LA
United Kingdom

Email: info@biorbyt.com, support@biorbyt.com

Phone: [+44 \(0\)1223 859353](tel:+44(0)1223859353) | Fax: [+1 \(415\) 651-8558](tel:+1(415)651-8558)

Biorbyt LLC

68 TW Alexander Drive
Research Triangle Park
Durham
NC 27713
United States

Email: info@biorbyt.com, support@biorbyt.com

Phone: [+1 \(415\) 906-5211](tel:+1(415)906-5211) | Fax: [+1 \(415\) 651-8558](tel:+1(415)651-8558)