

Product Datasheet

Human PSMA ELISA Kit (orb1293273)

| | |
|------------------------|--|
| Catalog Number | orb1293273 |
| Category | Assays and Kits |
| Description | Human PSMA/FOLH1 (Glutamate carboxypeptidase 2) ELISA Kit |
| Target | PSMA/FOLH1 |
| Reactivity | Human |
| UniProt ID | Q04609 |
| Assay Type | Sandwich |
| Assay Time | 4 hours |
| Range | 0.156-10ng/ml |
| Sensitivity | 0.094ng/ml |
| Sample Types | Serum,Plasma,Cell Culture Supernatant,Cell or tissue lysate,Other liquid samples |
| Storage | 2 - 8 °C for 12 months |
| Note | For research use only |
| Expiration Date | 6 months from date of receipt. |

Biorbyt Ltd.

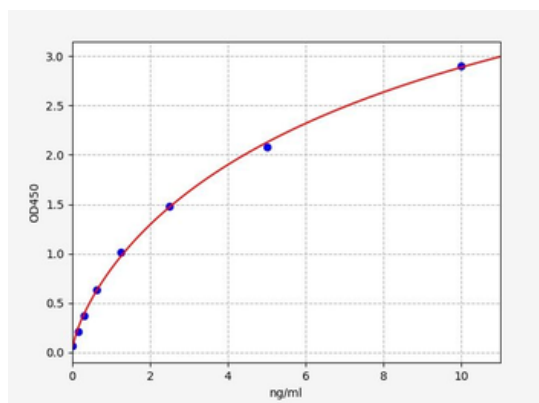
7 Signet Court, Swann Road
Cambridge
CB5 8LA
United Kingdom

Email: info@biorbyt.com, support@biorbyt.com
Phone: [+44 \(0\)1223 859353](tel:+44(0)1223859353) | Fax: [+1 \(415\) 651-8558](tel:+1(415)651-8558)

Biorbyt LLC

68 TW Alexander Drive
Research Triangle Park
Durham
NC 27713-2847
United States

Email: info@biorbyt.com, support@biorbyt.com
Phone: [+1 \(415\) 906-5211](tel:+1(415)906-5211) | Fax: [+1 \(415\) 651-8558](tel:+1(415)651-8558)



Standard curve for orb1293273 ELISA kit.

Biorbyt Ltd.

7 Signet Court, Swann Road
Cambridge
CB5 8LA
United Kingdom

Email: info@biorbyt.com, support@biorbyt.com

Phone: [+44 \(0\)1223 859353](tel:+44(0)1223859353) | Fax: [+1 \(415\) 651-8558](tel:+1(415)651-8558)

Biorbyt LLC

68 TW Alexander Drive
Research Triangle Park
Durham
NC 27713-2847
United States

Email: info@biorbyt.com, support@biorbyt.com

Phone: [+1 \(415\) 906-5211](tel:+1(415)906-5211) | Fax: [+1 \(415\) 651-8558](tel:+1(415)651-8558)