

Product Datasheet

PSMA Biosimilar Antibody (orb1291123)

Catalog Number	orb1291123
Category	Antibodies
Description	Anti-PSMA(rosopatamab biosimilar) mAb
Target	PSMA
Clonality	Monoclonal
Species/Host	Chimeric
Isotype	Human IgG1 - kappa
Conjugation	Unconjugated
Reactivity	Human
Form/Appearance	Powder
Reconstitution	Lyophilized from sterile PBS, pH 7.4. Normally 5 % - 8% trehalose is added as protectants before lyophilization. Please see Certificate of Analysis for specific instructions of reconstitution.
Purification	Purified from cell culture supernatant by affinity chromatography
UniProt ID	Q04609
Tested applications	ELISA, FC
Dilution range	ELISA 1:5000-10000; Flow Cyt 1:100
Antibody Type	Biosimilar Antibody
Endotoxins	Less than 1.0 EU/μg by the LAL method.

Biorbyt Ltd.

7 Signet Court, Swann Road
Cambridge
CB5 8LA
United Kingdom

Email: info@biorbyt.com, support@biorbyt.com

Phone: [+44 \(0\)1223 859353](tel:+44(0)1223859353) | Fax: [+1 \(415\) 651-8558](tel:+1(415)651-8558)

Biorbyt LLC

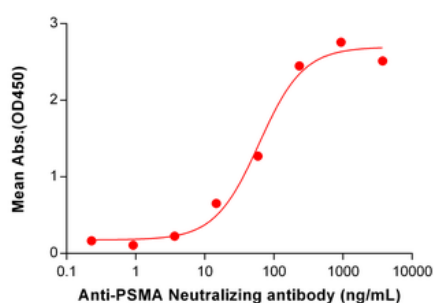
68 TW Alexander Drive
Research Triangle Park
Durham
NC 27713-2847
United States

Email: info@biorbyt.com, support@biorbyt.com

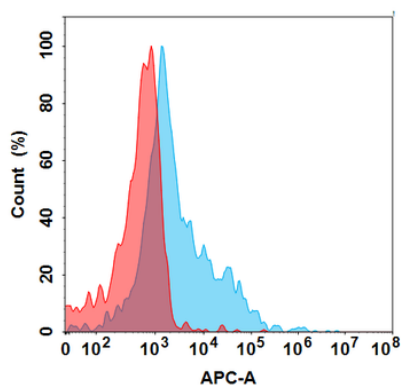
Phone: [+1 \(415\) 906-5211](tel:+1(415)906-5211) | Fax: [+1 \(415\) 651-8558](tel:+1(415)651-8558)

Storage	Maintain refrigerated at 2-8°C for up to 2 weeks. For long term storage store at -20°C in small aliquots to prevent freeze-thaw cycles.
Note	For research use only
Expiration Date	12 months from date of receipt.

Anti-PSMA (rosopatamab biosimilar) mAb ELISA
0.2 µg of Human PSMA, His tagged protein per well



ELISA plate pre-coated by 2 µg/mL (100 µL/well) Human PSMA Protein, His Tag orb1173914 can bind Anti-PSMA Neutralizing antibody (orb1291123) in a linear range of 3.66-234.38 ng/ml.



Flow cytometry analysis with 15 µg/mL Anti-PSMA (rosopatamab biosimilar) mAb (orb1291123) on Expi293 cells transfected with Human PSMA protein (Blue histogram) or Expi293 transfected with irrelevant protein (Red histogram).

Biorbyt Ltd.

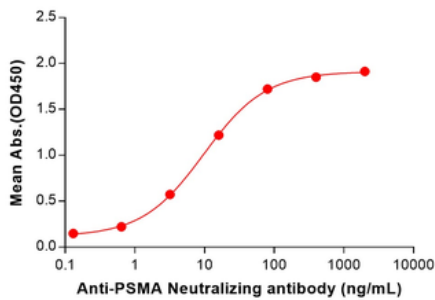
7 Signet Court, Swann Road
Cambridge
CB5 8LA
United Kingdom

Email: info@biorbyt.com, support@biorbyt.com
Phone: +44 (0)1223 859353 | Fax: +1 (415) 651-8558

Biorbyt LLC

68 TW Alexander Drive
Research Triangle Park
Durham
NC 27713-2847
United States

Email: info@biorbyt.com, support@biorbyt.com
Phone: +1 (415) 906-5211 | Fax: +1 (415) 651-8558

Anti-PSMA(rosopitamab biosimilar) mAb ELISA
0.2 µg of Human PSMA, hFc tagged protein per well

ELISA plate pre-coated by 2 µg/mL (100 µL/well) Human PSMA Protein, hFc Tag (orb1173922) can bind Anti-PSMA (rosopitamab biosimilar) mAb (orb1291123) in a linear range of 3.20–80 ng/ml. In order to specifically detect orb1291123, mouse anti-human Fab-specific antibody was used as detection antibody.

Biorbyt Ltd.

7 Signet Court, Swann Road
Cambridge
CB5 8LA
United Kingdom

Email: info@biorbyt.com, support@biorbyt.com

Phone: [+44 \(0\)1223 859353](tel:+44(0)1223859353) | Fax: [+1 \(415\) 651-8558](tel:+1(415)651-8558)

Biorbyt LLC

68 TW Alexander Drive
Research Triangle Park
Durham
NC 27713-2847
United States

Email: info@biorbyt.com, support@biorbyt.com

Phone: [+1 \(415\) 906-5211](tel:+1(415)906-5211) | Fax: [+1 \(415\) 651-8558](tel:+1(415)651-8558)