

Product Datasheet

SARS-CoV-2 Spike RBD Neutralizing Antibody, monoclonal, Chimeric (orb1274213)

Catalog Number	orb1274213
Category	Antibodies
Description	SARS-CoV-2 Spike RBD Neutralizing Antibody, monoclonal, Chimeric
Target	S
Clonality	Recombinant
Isotype	Human IgG1/kappa
Conjugation	Unconjugated
Reactivity	Mouse
Form/Appearance	Lyophilized
Concentration	batch dependent
Buffer/Preservatives	Lyophilized from 0.22 um filtered solution in PBS, pH 7.4 . Normally trehalose is added as protectant before lyophilization. Contact us for customized product form or formulation.
Purification	>95% as determined by SDS-PAGE.
Immunogen	Anti-SARS-CoV-2 Spike RBD Antibody, Chimeric mAb, Human IgG1 is a chimeric monoclonal antibody combining the constant domains of the human IgG1 molecule with mouse variable regions. The variable region was obtained from a mouse immunized with purified recombinant SARS-CoV-2 Spike S1 Protein. Pseudovirus assay shows that this antibody has potent neutralizing activity against pseudovirus bearing SARS-CoV-2 Spike protein.

Biorbyt Ltd.

7 Signet Court, Swann Road
Cambridge
CB5 8LA
United Kingdom

Email: info@biorbyt.com, support@biorbyt.com

Phone: [+44 \(0\)1223 859353](tel:+44(0)1223859353) | Fax: [+1 \(415\) 651-8558](tel:+1(415)651-8558)

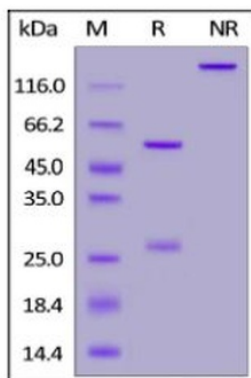
Biorbyt LLC

68 TW Alexander Drive
Research Triangle Park
Durham
NC 27713-2847
United States

Email: info@biorbyt.com, support@biorbyt.com

Phone: [+1 \(415\) 906-5211](tel:+1(415)906-5211) | Fax: [+1 \(415\) 651-8558](tel:+1(415)651-8558)

UniProt ID	P0DTC2
Tested applications	ELISA, WB
Application notes	This antibody can be paired with other Anti-SARS-CoV-2 Spike S1 antibodies to detect SARS-CoV-2 Spike S1 protein in sandwich ELISA or LFA assay.
Specificity	This product is a specific antibody against SARS-CoV-2 Spike protein RBD domain. No cross-reactivity is detected with Spike protein RBD domain of other coronaviruses, including SARS-CoV, MERS-CoV, HCoV-229E, HCoV-NL63, HCoV-OC43 and HCoV-HKU1.
Antibody Type	Primary Antibody
Modifications	None
Storage	Maintain refrigerated at 2-8°C for up to 2 weeks. For long term storage store at -20°C in small aliquots to prevent freeze-thaw cycles.
Note	For research use only
Expiration Date	12 months from date of receipt.



Anti-SARS-CoV-2 Spike RBD Antibody, Chimeric mAb, Human IgG1 on SDS-PAGE under reducing (R) and non-reducing (NR) conditions. The gel was stained overnight with Coomassie Blue. The purity of the protein is greater than 95%.

Biorbyt Ltd.

7 Signet Court, Swann Road
Cambridge
CB5 8LA
United Kingdom

Email: info@biorbyt.com, support@biorbyt.com

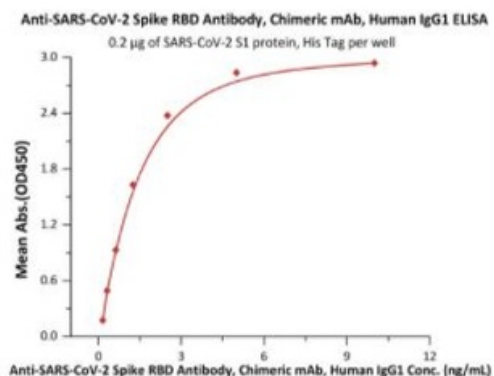
Phone: +44 (0)1223 859353 | Fax: +1 (415) 651-8558

Biorbyt LLC

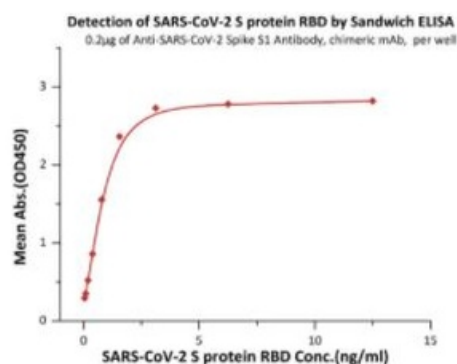
68 TW Alexander Drive
Research Triangle Park
Durham
NC 27713-2847
United States

Email: info@biorbyt.com, support@biorbyt.com

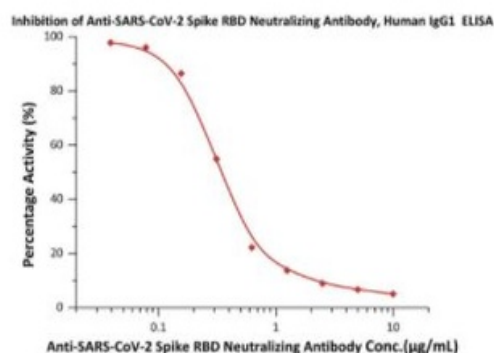
Phone: +1 (415) 906-5211 | Fax: +1 (415) 651-8558



Immobilized SARS-CoV-2 S1 protein, His Tag at 2 µg/mL (100 µL/well) can bind Anti-SARS-CoV-2 Spike RBD Antibody, Chimeric mAb, Human IgG1 with a linear range of 0.2-3 ng/mL (QC tested).



Detection SARS-CoV-2 S protein RBD by Sandwich ELISA Assay. Immobilized Anti-SARS-CoV-2 Spike RBD Antibody, Chimeric mAb, Human IgG1 at 2 µg/mL (100 µL/well) can bind S protein RBD. And then add Anti-SARS-CoV-2 Spike RBD Antibody, Chimeric mAb, Human IgG1 at 1:5000. Detection was performed using HRP-conjugated streptavidin with sensitivity of 25 pg/mL (Routinely tested).



Immobilized Human ACE2, His Tag at 2 µg/mL (100 µL/well) can bind pre-mixed increasing concentrations of Anti-SARS-CoV-2 Spike RBD Antibody, Chimeric mAb, Human IgG1 and 0.4 µg/mL (50 µL/well) Biotinylated S protein RBD, His,Avitag with a half maximal inhibitory concentration (IC50) of 0.33 µg/mL (Routinely tested).

Biorbyt Ltd.

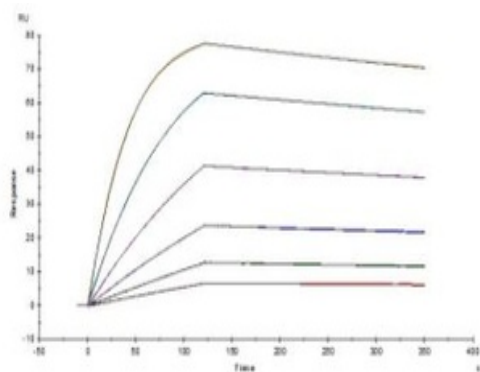
7 Signet Court, Swann Road
Cambridge
CB5 8LA
United Kingdom

Email: info@biorbyt.com, support@biorbyt.com
Phone: +44 (0)1223 859353 | Fax: +1 (415) 651-8558

Biorbyt LLC

68 TW Alexander Drive
Research Triangle Park
Durham
NC 27713-2847
United States

Email: info@biorbyt.com, support@biorbyt.com
Phone: +1 (415) 906-5211 | Fax: +1 (415) 651-8558



Anti-SARS-CoV-2 Spike RBD Antibody, Chimeric mAb, Human IgG1 captured on CM5 chip via Anti-human IgG Fc antibodies surface can bind SARS-CoV-2 S protein RBD, His Tag with an affinity constant of 0.375 nM as determined in a SPR assay (Biacore T200) (Routinely tested).

Biorbyt Ltd.

7 Signet Court, Swann Road
Cambridge
CB5 8LA
United Kingdom

Email: info@biorbyt.com, support@biorbyt.com

Phone: [+44 \(0\)1223 859353](tel:+44(0)1223859353) | Fax: [+1 \(415\) 651-8558](tel:+1(415)651-8558)

Biorbyt LLC

68 TW Alexander Drive
Research Triangle Park
Durham
NC 27713-2847
United States

Email: info@biorbyt.com, support@biorbyt.com

Phone: [+1 \(415\) 906-5211](tel:+1(415)906-5211) | Fax: [+1 \(415\) 651-8558](tel:+1(415)651-8558)