

Product Datasheet

SARS-CoV-2 (COVID-19) S1 RBD Single Domain Antibody [T4P5-H12] (orb1274197)

Catalog Number	orb1274197
Category	Antibodies
Description	SARS-CoV-2 (COVID-19) S1 RBD Single Domain Antibody [T4P5-H12]
Target	S
Clonality	Recombinant
Species/Host	Camelus
Isotype	sdAb
Conjugation	Unconjugated
Reactivity	Virus
Form/Appearance	Liquid
Concentration	batch dependent
Buffer/Preservatives	SARS-CoV-2 (COVID-19) S1 RBD Antibody [T4P5-H12] Antibody is supplied in PBS.
Purification	SARS-CoV-2 (COVID-19) S1 RBD Antibody [T4P5-H12] is affinity chromatography purified via Nickel column. Antibody is supplied as a His-tagged purified protein. It also contains a myc-tag for detection.
Immunogen	SARS-CoV-2 S protein RBD containing C-terminal His Tag. The protein was expressed in human 293 cells (HEK293). It contains amino acids Arg 319 - Lys 537.

Biorbyt Ltd.

7 Signet Court, Swann Road
Cambridge
CB5 8LA
United Kingdom

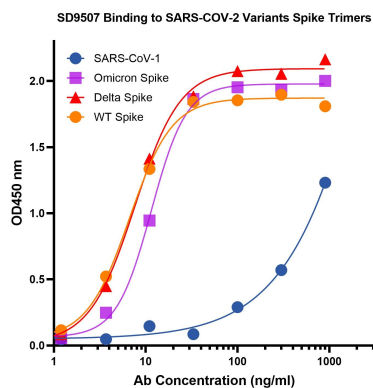
Email: info@biorbyt.com, support@biorbyt.com
Phone: [+44 \(0\)1223 859353](tel:+44(0)1223859353) | Fax: [+1 \(415\) 651-8558](tel:+1(415)651-8558)

Biorbyt LLC

68 TW Alexander Drive
Research Triangle Park
Durham
NC 27713-2847
United States

Email: info@biorbyt.com, support@biorbyt.com
Phone: [+1 \(415\) 906-5211](tel:+1(415)906-5211) | Fax: [+1 \(415\) 651-8558](tel:+1(415)651-8558)

Tested applications	ELISA
Antibody Type	Primary Antibody
Clone Number	T4P5-H12
Modifications	None
Storage	Maintain refrigerated at 2-8°C for up to 2 weeks. For long term storage store at -20°C in small aliquots to prevent freeze-thaw cycles.
Dry Ice Shipping	Please note: This product requires shipment on dry ice. A dry ice surcharge will apply.
Note	For research use only
NCBI	QHD43424
Expiration Date	12 months from date of receipt.



ELISA Validation with SARS-CoV-2 (COVID-19) Spike Trimer Proteins. Antibodies: SARS-CoV-2 (COVID-19) Spike S1 RBD Antibody, orb1274197. A direct ELISA was performed using SARS-CoV-2 Spike trimer recombinant proteins of WT, Omicron and Delta variants as coating antigen at 1 µg/mL and the anti-SARS-CoV-2 (COVID-19) Spike S1 RBD antibody (orb1274197) as the capture antibody, following by anti-cMyc-tag antibody (orb1239964) at 1 µg/mL. Secondary: Goat anti-mouse IgG HRP conjugate at 1:5000 dilution. Detection range is from 0.4 ng/mL to 900 ng/mL. SARS-CoV-2 (COVID-19) Spike S1 RBD Antibody, orb1274197 can detect spike trimer protein at 1.5 ng/mL.

Biorbyt Ltd.

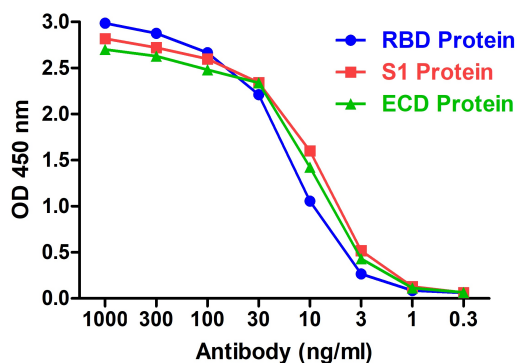
7 Signet Court, Swann Road
Cambridge
CB5 8LA
United Kingdom

Email: info@biorbyt.com, support@biorbyt.com
Phone: +44 (0)1223 859353 | Fax: +1 (415) 651-8558

Biorbyt LLC

68 TW Alexander Drive
Research Triangle Park
Durham
NC 27713-2847
United States

Email: info@biorbyt.com, support@biorbyt.com
Phone: +1 (415) 906-5211 | Fax: +1 (415) 651-8558



ELISA Validation with SARS-CoV-2 (COVID-19) Spike RBD, S1 and ECD Proteins Antibodies: SARS-CoV-2 (COVID-19) Spike S1 RBD Antibody, orb1274197. A direct ELISA was performed using SARS-CoV-2 Spike recombinant proteins (RBD, orb1231588; S1, orb1227612; ECD, orb1231547) as coating antigen at 1 $\mu\text{g}/\text{mL}$ and the anti-SARS-CoV-2 (COVID-19) Spike S1 RBD antibody (orb1274197) as the capture antibody, following by anti-cMyc-tag antibody (orb1239964) at 1 $\mu\text{g}/\text{mL}$. Secondary: Goat anti-mouse IgG HRP conjugate at 1:5000 dilution. Detection range is from 0.3 ng/mL to 1000 ng/mL. SARS-CoV-2 (COVID-19) Spike S1 RBD Antibody, orb1274197 can detect spike RBD, S1 and ECD proteins at 2 ng/mL.

Biorbyt Ltd.

7 Signet Court, Swann Road
Cambridge
CB5 8LA
United Kingdom

Email: info@biorbyt.com, support@biorbyt.com

Phone: [+44 \(0\)1223 859353](tel:+44(0)1223859353) | Fax: [+1 \(415\) 651-8558](tel:+1(415)651-8558)

Biorbyt LLC

68 TW Alexander Drive
Research Triangle Park
Durham
NC 27713-2847
United States

Email: info@biorbyt.com, support@biorbyt.com

Phone: [+1 \(415\) 906-5211](tel:+1(415)906-5211) | Fax: [+1 \(415\) 651-8558](tel:+1(415)651-8558)