

Product Datasheet

SARS-CoV-2 (COVID-19) Spike S2 Single Domain Antibody [P1B8] (orb1274189)

Catalog Number	orb1274189
Category	Antibodies
Description	SARS-CoV-2 (COVID-19) Spike S2 Single Domain Antibody [P1B8]
Target	S
Clonality	Recombinant
Species/Host	Camelus
Isotype	sdAb
Conjugation	Unconjugated
Reactivity	Virus
Form/Appearance	Liquid
Concentration	batch dependent
Buffer/Preservatives	SARS-CoV-2 (COVID-19) Spike S2 Antibody is supplied in PBS.
Purification	SARS-CoV-2 (COVID-19) Spike S2 Antibody is affinity chromatography purified via Nickel column. Antibody is supplied as a His-tagged purified protein. It also contains a myc-tag for detection.
Immunogen	SARS-CoV-2 Spike S2 protein containing C-terminal His Tag. The protein was expressed in human 293 cells (HEK293). It contains amino acids Ser 686 - Pro 1213.
Tested applications	ELISA

Biorbyt Ltd.

7 Signet Court, Swann Road
Cambridge
CB5 8LA
United Kingdom

Email: info@biorbyt.com, support@biorbyt.com

Phone: [+44 \(0\)1223 859353](tel:+44(0)1223859353) | Fax: [+1 \(415\) 651-8558](tel:+1(415)651-8558)

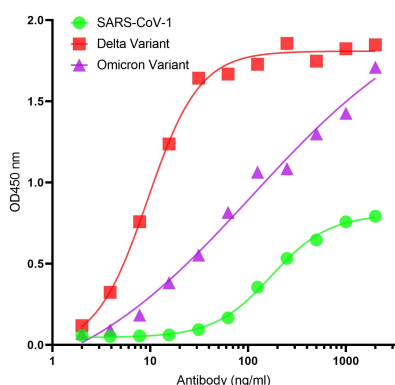
Biorbyt LLC

68 TW Alexander Drive
Research Triangle Park
Durham
NC 27713-2847
United States

Email: info@biorbyt.com, support@biorbyt.com

Phone: [+1 \(415\) 906-5211](tel:+1(415)906-5211) | Fax: [+1 \(415\) 651-8558](tel:+1(415)651-8558)

Antibody Type	Primary Antibody
Clone Number	P1B8
Modifications	None
Storage	Maintain refrigerated at 2-8°C for up to 2 weeks. For long term storage store at -20°C in small aliquots to prevent freeze-thaw cycles.
Dry Ice Shipping	Please note: This product requires shipment on dry ice. A dry ice surcharge will apply.
Note	For research use only
NCBI	QHD43416
Expiration Date	12 months from date of receipt.



ELISA Validation with Spike Trimer Proteins of SARS-CoV-2 Variants and SARS-CoV-1 Antibodies: SARS-CoV-2 (COVID-19) Spike S2 Antibody, orb1274189. A direct ELISA was performed using Spike trimer protein of SARS-CoV-2 Variants (Delta and Omicron) and SARS-CoV-1 as coating antigens at 1 µg/mL and the anti-SARS-CoV-2 (COVID-19) Spike S2 antibody (orb1274189) as the capture antibody, following by anti-cMyc-tag antibody (orb1239964) at 1 µg/mL. Secondary: Goat anti-mouse IgG HRP conjugate at 1:5000 dilution. Detection range is from 16 ng/mL to 2000 ng/mL.

Biorbyt Ltd.

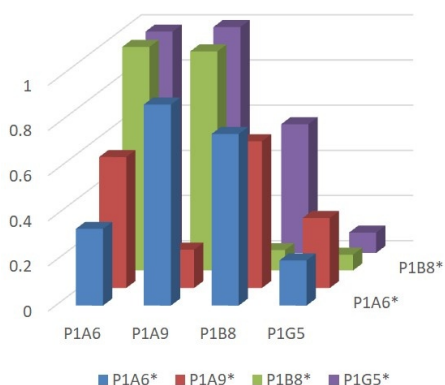
7 Signet Court, Swann Road
Cambridge
CB5 8LA
United Kingdom

Email: info@biorbyt.com, support@biorbyt.com
Phone: +44 (0)1223 859353 | Fax: +1 (415) 651-8558

Biorbyt LLC

68 TW Alexander Drive
Research Triangle Park
Durham
NC 27713-2847
United States

Email: info@biorbyt.com, support@biorbyt.com
Phone: +1 (415) 906-5211 | Fax: +1 (415) 651-8558



Epitope Mapping of four Spike S2 Antibodies by Direct Competitive ELISA A direct competitive ELISA was developed for the epitope mapping using Spike trimer proteins of SARS-CoV-2 Delta variant at 1 µg/ml as the coating antigen and biotinylated Spike S2 single domain antibodies (sdAbs) as the competitive antibodies. The sdAb mixtures (biotinylated and unconjugated sdAbs) were added to ELISA plate and streptavidin-HRP was used to detect the captured biotinylated sdAbs. The assay suggests the antibodies bind to different epitopes of the Spike trimer.

Biorbyt Ltd.

7 Signet Court, Swann Road
Cambridge
CB5 8LA
United Kingdom

Email: info@biorbyt.com, support@biorbyt.com
Phone: [+44 \(0\)1223 859353](tel:+44(0)1223859353) | Fax: [+1 \(415\) 651-8558](tel:+1(415)651-8558)

Biorbyt LLC

68 TW Alexander Drive
Research Triangle Park
Durham
NC 27713-2847
United States

Email: info@biorbyt.com, support@biorbyt.com
Phone: [+1 \(415\) 906-5211](tel:+1(415)906-5211) | Fax: [+1 \(415\) 651-8558](tel:+1(415)651-8558)