

Product Datasheet

CXCL3 Antibody (orb1272515)

Catalog Number	orb1272515
Category	Antibodies
Description	CXCL3 Antibody
Target	CXCL3
Clonality	Polyclonal
Species/Host	Rabbit
Conjugation	Unconjugated
Reactivity	Human
Form/Appearance	Lyophilized
Concentration	batch dependent
Purification	Anti-hGRO-gamma specific antibody was purified by affinity chromatography employing immobilized hGRO-gamma matrix.
Immunogen	Produced from sera of rabbits pre-immunized with highly pure (>98%) recombinant hGRO-gamma (human GRO-gamma).
UniProt ID	P19876
Tested applications	ELISA, NeA, WB
Antibody Type	Primary Antibody
Modifications	None

Biorbyt Ltd.

7 Signet Court, Swann Road
Cambridge
CB5 8LA
United Kingdom

Email: info@biorbyt.com, support@biorbyt.com

Phone: [+44 \(0\)1223 859353](tel:+44(0)1223859353) | Fax: [+1 \(415\) 651-8558](tel:+1(415)651-8558)

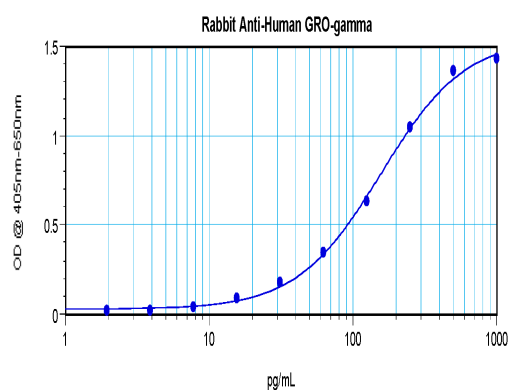
Biorbyt LLC

68 TW Alexander Drive
Research Triangle Park
Durham
NC 27713
United States

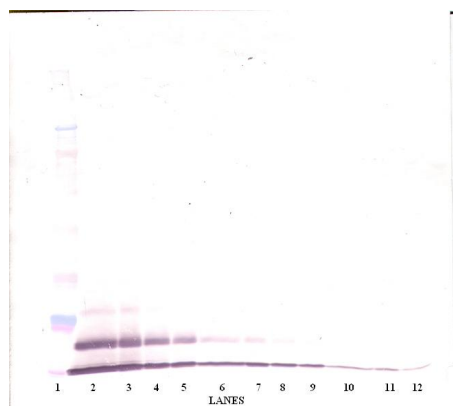
Email: info@biorbyt.com, support@biorbyt.com

Phone: [+1 \(415\) 906-5211](tel:+1(415)906-5211) | Fax: [+1 \(415\) 651-8558](tel:+1(415)651-8558)

Storage	Maintain refrigerated at 2-8°C for up to 2 weeks. For long term storage store at -20°C in small aliquots to prevent freeze-thaw cycles.
Note	For research use only
NCBI	P19876
Expiration Date	12 months from date of receipt.



To detect Human GRO-gamma by sandwich ELISA (using 100 ul/well antibody solution) a concentration of 0.5 - 2.0 ug/ml of this antibody is required. This antigen affinity purified antibody, in conjunction with Anti-Human GRO-gamma (orb1272514) as a detection antibody, allows the detection of at least 0.2 - 0.4 ng/well of recombinant Human GRO-gamma.



To detect Human GRO-gamma by Western Blot analysis this antibody can be used at a concentration of 0.1-0.2 ug/ml. When used in conjunction with compatible secondary reagents, the detection limit for recombinant Human GRO-gamma is 1.5-3.0 ng/lane, under either reducing or non-reducing conditions.

Biorbyt Ltd.

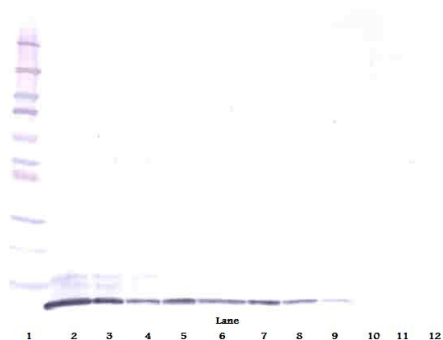
7 Signet Court, Swann Road
Cambridge
CB5 8LA
United Kingdom

Email: info@biorbyt.com, support@biorbyt.com
Phone: +44 (0)1223 859353 | Fax: +1 (415) 651-8558

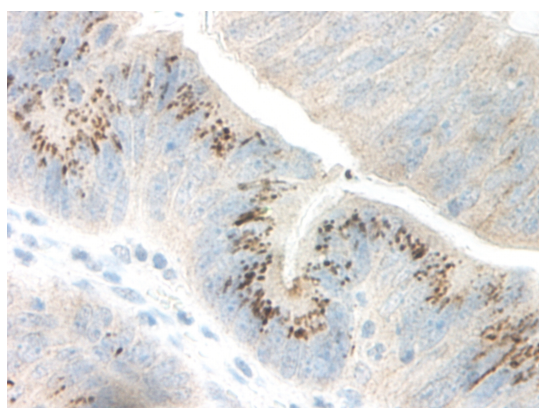
Biorbyt LLC

68 TW Alexander Drive
Research Triangle Park
Durham
NC 27713
United States

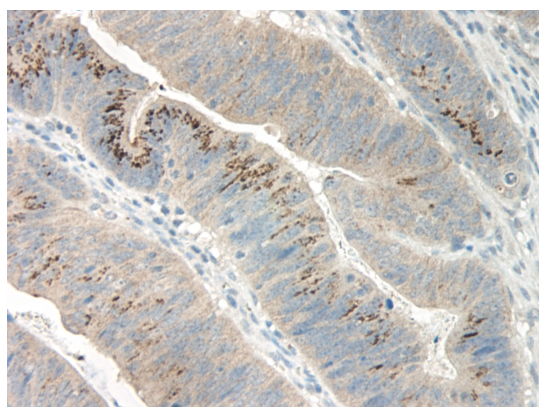
Email: info@biorbyt.com, support@biorbyt.com
Phone: +1 (415) 906-5211 | Fax: +1 (415) 651-8558



To detect Human GRO-gamma by Western Blot analysis this antibody can be used at a concentration of 0.1-0.2 ug/ml. When used in conjunction with compatible secondary reagents, the detection limit for recombinant Human GRO-gamma is 1.5-3.0 ng/lane, under either reducing or non-reducing conditions.



This antibody stained formalin-fixed, paraffin-embedded sections of human colon/rectum adenocarcinoma. The recommended concentration is 0.7 mg/ml-0.5mg/ml with an overnight incubation at 4°C. An HRP-labeled polymer detection system was used with a DAB chromogen. Heat induced antigen retrieval with a pH 6.0 sodium citrate buffer is recommended. Optimal concentrations and conditions may vary.



This antibody stained formalin-fixed, paraffin-embedded sections of human colon/rectum adenocarcinoma. The recommended concentration is 0.7 mg/ml-0.5mg/ml with an overnight incubation at 4°C. An HRP-labeled polymer detection system was used with a DAB chromogen. Heat induced antigen retrieval with a pH 6.0 sodium citrate buffer is recommended. Optimal concentrations and conditions may vary.

Biorbyt Ltd.

7 Signet Court, Swann Road
Cambridge
CB5 8LA
United Kingdom

Email: info@biorbyt.com, support@biorbyt.com

Phone: +44 (0)1223 859353 | Fax: +1 (415) 651-8558

Biorbyt LLC

68 TW Alexander Drive
Research Triangle Park
Durham
NC 27713
United States

Email: info@biorbyt.com, support@biorbyt.com

Phone: +1 (415) 906-5211 | Fax: +1 (415) 651-8558