

Product Datasheet

STMN2 Antibody (orb1267821)

Catalog Number	orb1267821
Category	Antibodies
Description	STMN2 Antibody
Target	STMN2
Clonality	Polyclonal
Species/Host	Rabbit
Isotype	Rabbit Ig
Conjugation	Unconjugated
Reactivity	Human
Predicted Reactivity	Gallus, Mouse, Rat
Form/Appearance	Liquid
Concentration	batch dependent
Buffer/Preservatives	Supplied in PBS with 0.09% (W/V) sodium azide.
Purification	This antibody is purified through a protein A column, followed by peptide affinity purification.
Immunogen	This STMN2 antibody is generated from rabbits immunized with a KLH conjugated synthetic peptide between 145-173 amino acids from the C-terminal region of human STMN2.
UniProt ID	Q93045

Biorbyt Ltd.

7 Signet Court, Swann Road
Cambridge
CB5 8LA
United Kingdom

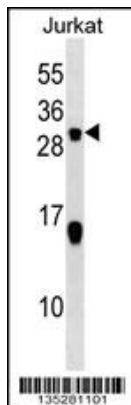
Email: info@biorbyt.com, support@biorbyt.com
Phone: [+44 \(0\)1223 859353](tel:+44(0)1223859353) | Fax: [+1 \(415\) 651-8558](tel:+1(415)651-8558)

Biorbyt LLC

68 TW Alexander Drive
Research Triangle Park
Durham
NC 27713-2847
United States

Email: info@biorbyt.com, support@biorbyt.com
Phone: [+1 \(415\) 906-5211](tel:+1(415)906-5211) | Fax: [+1 \(415\) 651-8558](tel:+1(415)651-8558)

MW	21 kDa
Tested applications	WB
Application notes	For WB starting dilution is: 1:1000
Antibody Type	Primary Antibody
Modifications	None
Storage	Maintain refrigerated at 2-8°C for up to 2 weeks. For long term storage store at -20°C in small aliquots to prevent freeze-thaw cycles.
Note	For research use only
NCBI	Q93045
Expiration Date	12 months from date of receipt.



Western blot analysis in Jurkat cell line lysates (35 ug/lane).

Biorbyt Ltd.

7 Signet Court, Swann Road
Cambridge
CB5 8LA
United Kingdom

Email: info@biorbyt.com, support@biorbyt.com

Phone: [+44 \(0\)1223 859353](tel:+44(0)1223859353) | Fax: [+1 \(415\) 651-8558](tel:+1(415)651-8558)

Biorbyt LLC

68 TW Alexander Drive
Research Triangle Park
Durham
NC 27713-2847
United States

Email: info@biorbyt.com, support@biorbyt.com

Phone: [+1 \(415\) 906-5211](tel:+1(415)906-5211) | Fax: [+1 \(415\) 651-8558](tel:+1(415)651-8558)