

Product Datasheet

HLA-G Antibody (orb1262443)

Catalog Number	orb1262443
Category	Antibodies
Description	HLA-G Antibody
Target	HLA-G
Clonality	Polyclonal
Species/Host	Rabbit
Isotype	Rabbit Ig
Conjugation	Unconjugated
Reactivity	Human
Form/Appearance	Liquid
Concentration	batch dependent
Buffer/Preservatives	Supplied in PBS with 0.09% (W/V) sodium azide.
Purification	This antibody is purified through a protein A column, followed by peptide affinity purification.
Immunogen	This HLA-G antibody is generated from rabbits immunized with a KLH conjugated synthetic peptide between 62-89 amino acids from the Central region of human HLA-G.
UniProt ID	P17693
MW	38 kDa

Biorbyt Ltd.

7 Signet Court, Swann Road
Cambridge
CB5 8LA
United Kingdom

Email: info@biorbyt.com, support@biorbyt.com

Phone: [+44 \(0\)1223 859353](tel:+44(0)1223859353) | Fax: [+1 \(415\) 651-8558](tel:+1(415)651-8558)

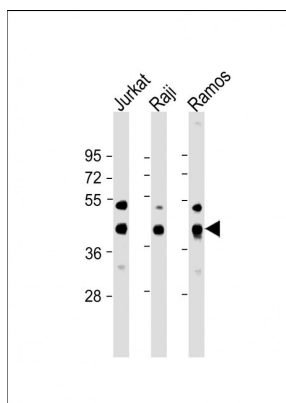
Biorbyt LLC

68 TW Alexander Drive
Research Triangle Park
Durham
NC 27713
United States

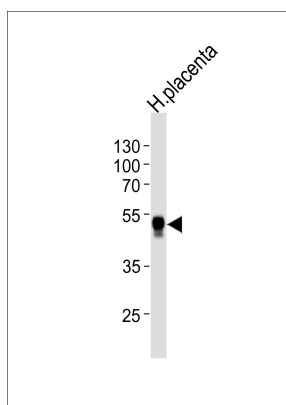
Email: info@biorbyt.com, support@biorbyt.com

Phone: [+1 \(415\) 906-5211](tel:+1(415)906-5211) | Fax: [+1 \(415\) 651-8558](tel:+1(415)651-8558)

Tested applications	FC, IHC-P, WB
Application notes	For WB starting dilution is: 1:1000For IHC-P starting dilution is: 1:10~50For FACS starting dilution is: 1:10~50
Antibody Type	Primary Antibody
Modifications	None
Storage	Maintain refrigerated at 2-8°C for up to 2 weeks. For long term storage store at -20°C in small aliquots to prevent freeze-thaw cycles.
Note	For research use only
NCBI	P17693
Expiration Date	12 months from date of receipt.



Western Blot at 1:2000 dilution Lane 1: Jurkat whole cell lysate
Lane 2: Raji whole cell lysate Lane 3: Ramos whole cell lysate
Lysates/proteins at 20 ug per lane.



Western blot analysis of lysate from human placenta tissue
lysate, using HLA-G Antibody) at 1:1000 at each lane.

Biorbyt Ltd.

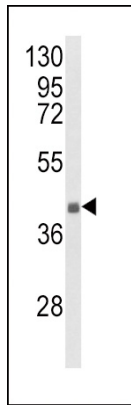
7 Signet Court, Swann Road
Cambridge
CB5 8LA
United Kingdom

Email: info@biorbyt.com, support@biorbyt.com
Phone: [+44 \(0\)1223 859353](tel:+44(0)1223859353) | Fax: [+1 \(415\) 651-8558](tel:+1(415)651-8558)

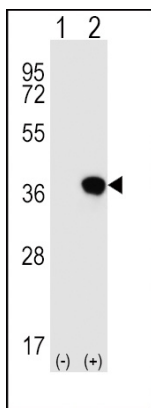
Biorbyt LLC

68 TW Alexander Drive
Research Triangle Park
Durham
NC 27713
United States

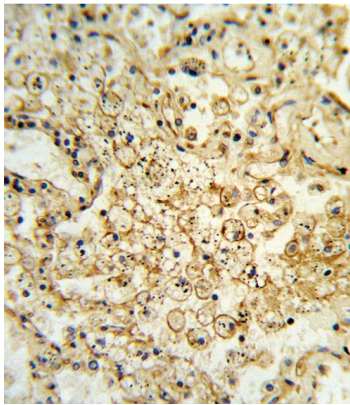
Email: info@biorbyt.com, support@biorbyt.com
Phone: [+1 \(415\) 906-5211](tel:+1(415)906-5211) | Fax: [+1 \(415\) 651-8558](tel:+1(415)651-8558)



Western blot analysis of HLA-G Antibody in NCI-H460 cell line lysates (35 ug/lane)



Western blot analysis of HLA-G using rabbit polyclonal HLA-G Antibody using 293 cell lysates (2 ug/lane) either nontransfected (Lane 1) or transiently transfected (Lane 2) with the HLA-G gene.



Formalin-fixed and paraffin-embedded human lung carcinoma reacted with HLA-G Antibody, which was peroxidase-conjugated to the secondary antibody, followed by DAB staining.

Biorbyt Ltd.

7 Signet Court, Swann Road
Cambridge
CB5 8LA
United Kingdom

Email: info@biorbyt.com, support@biorbyt.com

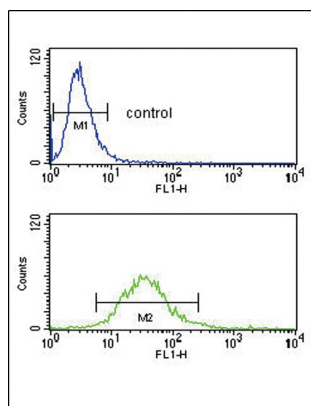
Phone: +44 (0)1223 859353 | Fax: +1 (415) 651-8558

Biorbyt LLC

68 TW Alexander Drive
Research Triangle Park
Durham
NC 27713
United States

Email: info@biorbyt.com, support@biorbyt.com

Phone: +1 (415) 906-5211 | Fax: +1 (415) 651-8558



Flow cytometry analysis of NCI-H460 cells (bottom histogram) compared to a negative control cell (top histogram). FITC-conjugated goat-anti-rabbit secondary antibodies were used for the analysis.

Biorbyt Ltd.

7 Signet Court, Swann Road
Cambridge
CB5 8LA
United Kingdom

Email: info@biorbyt.com, support@biorbyt.com

Phone: +44 (0)1223 859353 | Fax: +1 (415) 651-8558

Biorbyt LLC

68 TW Alexander Drive
Research Triangle Park
Durham
NC 27713
United States

Email: info@biorbyt.com, support@biorbyt.com

Phone: +1 (415) 906-5211 | Fax: +1 (415) 651-8558