

Product Datasheet

ESR2 Antibody (orb1252769)

Catalog Number	orb1252769
Category	Antibodies
Description	ESR2 Antibody
Target	ESR2
Clonality	Monoclonal
Species/Host	Mouse
Isotype	IgG2a
Conjugation	Unconjugated
Reactivity	Equine, Human, Monkey, Mouse, Porcine, Rat, Sheep
Form/Appearance	Liquid
Concentration	0.2 mg/mL
Buffer/Preservatives	PBS with 0.1 mg/ml rAlbumin and 0.05% sodium azide
Purification	Protein G purified monoclonal antibody
Immunogen	The C-terminus fragment of recombinant human Estrogen Receptor beta protein was used as the immunogen for this antibody.
UniProt ID	Q92731
Tested applications	FC, IF, IHC, WB

Biorbyt Ltd.

7 Signet Court, Swann Road
Cambridge
CB5 8LA
United Kingdom

Email: info@biorbyt.com, support@biorbyt.com

Phone: [+44 \(0\)1223 859353](tel:+44(0)1223859353) | Fax: [+1 \(415\) 651-8558](tel:+1(415)651-8558)

Biorbyt LLC

68 TW Alexander Drive
Research Triangle Park
Durham
NC 27713
United States

Email: info@biorbyt.com, support@biorbyt.com

Phone: [+1 \(415\) 906-5211](tel:+1(415)906-5211) | Fax: [+1 \(415\) 651-8558](tel:+1(415)651-8558)

Application notes

Flow Cytometry: 0.5-1 μ g/10e6 cells
IF: 1-2 μ g/mL
WB: 0.5-1 μ g/mL
IHC (FFPE): 0.5-1 μ g/mL for 30 minutes at RT (1)
The concentration stated for each application is a general starting point. Variations in protocols, secondaries and substrates may require the Estrogen Receptor beta antibody to be titered up or down for optimal performance.
1. Staining of formalin-fixed tissues requires boiling tissue sections in 10mM citrate buffer, pH 6.0, for 10-20 min followed by cooling at RT for 20 minutes.
2. The prediluted format is supplied in a dropper bottle and is optimized for use in IHC. After epitope retrieval step (if required), drip mAb solution onto the tissue section and incubate at RT for 30 min.

Antibody Type

Primary Antibody

Clone Number

ERb455

Modifications

None

Storage

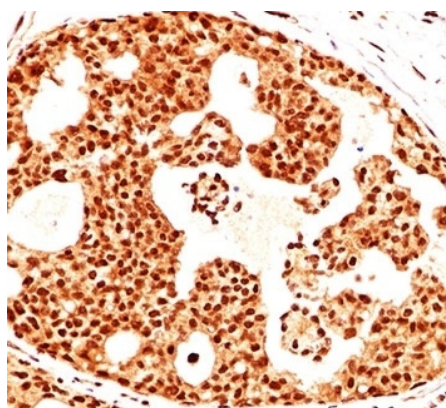
Maintain refrigerated at 2-8°C for up to 2 weeks. For long term storage store at -20°C in small aliquots to prevent freeze-thaw cycles.

Note

For research use only

Expiration Date

12 months from date of receipt.



IHC testing of breast cancer stained with Estrogen Receptor beta antibody (ERb455).

Biorbyt Ltd.

7 Signet Court, Swann Road
Cambridge
CB5 8LA
United Kingdom

Email: info@biorbyt.com, support@biorbyt.com

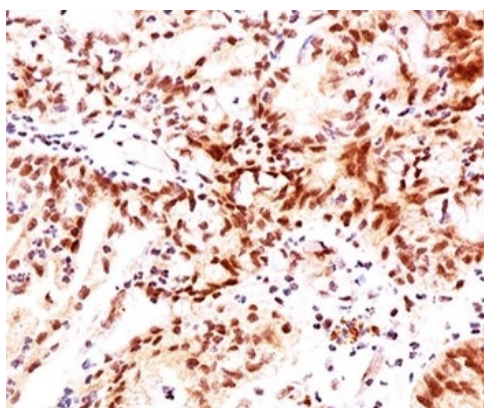
Phone: +44 (0)1223 859353 | Fax: +1 (415) 651-8558

Biorbyt LLC

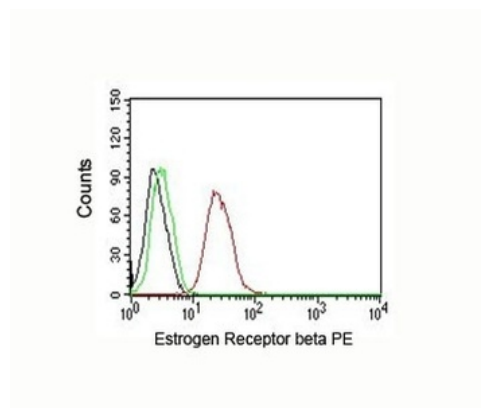
68 TW Alexander Drive
Research Triangle Park
Durham
NC 27713
United States

Email: info@biorbyt.com, support@biorbyt.com

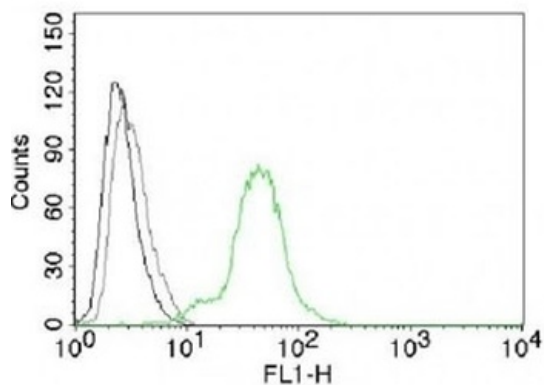
Phone: +1 (415) 906-5211 | Fax: +1 (415) 651-8558



IHC testing of ovarian cancer stained with Estrogen Receptor beta antibody (ERb455).



FACS testing of MCF-7 cells: Black = cells alone; Green = isotype control; Red = Estrogen Receptor beta antibody PE conjugate.



FACS testing of BT474 cells: Black = cells alone; Gray = isotype control; Green = Estrogen Receptor beta antibody AF488 conjugate.

Biorbyt Ltd.

7 Signet Court, Swann Road
Cambridge
CB5 8LA
United Kingdom

Email: info@biorbyt.com, support@biorbyt.com

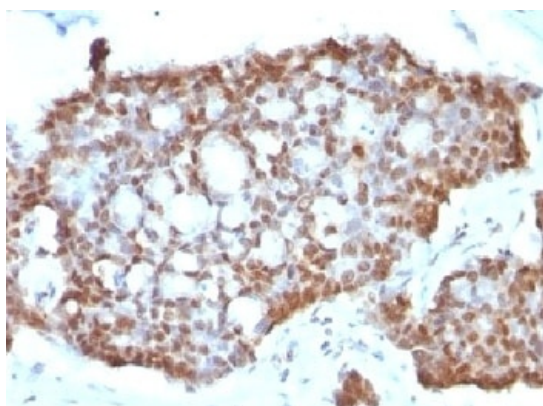
Phone: +44 (0)1223 859353 | Fax: +1 (415) 651-8558

Biorbyt LLC

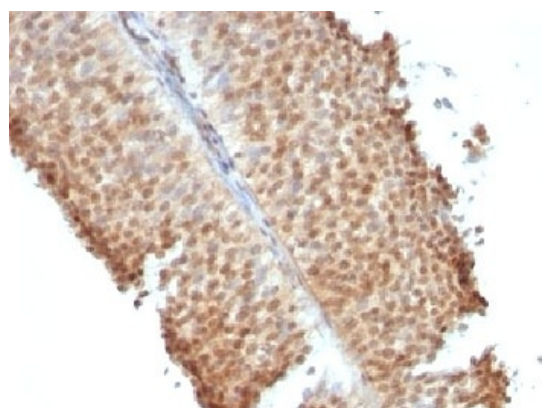
68 TW Alexander Drive
Research Triangle Park
Durham
NC 27713
United States

Email: info@biorbyt.com, support@biorbyt.com

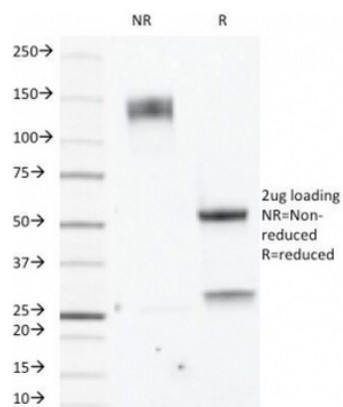
Phone: +1 (415) 906-5211 | Fax: +1 (415) 651-8558



IHC testing of gastric carcinoma stained with Estrogen Receptor beta antibody (ERb455).



IHC testing of bladder carcinoma stained with Estrogen Receptor beta antibody (ERb455).



SDS-PAGE Analysis of Purified, BSA-Free Estrogen Receptor beta Antibody (clone ERb455). Confirmation of Integrity and Purity of the Antibody.

Biorbyt Ltd.

7 Signet Court, Swann Road
Cambridge
CB5 8LA
United Kingdom

Email: info@biorbyt.com, support@biorbyt.com

Phone: +44 (0)1223 859353 | Fax: +1 (415) 651-8558

Biorbyt LLC

68 TW Alexander Drive
Research Triangle Park
Durham
NC 27713
United States

Email: info@biorbyt.com, support@biorbyt.com

Phone: +1 (415) 906-5211 | Fax: +1 (415) 651-8558